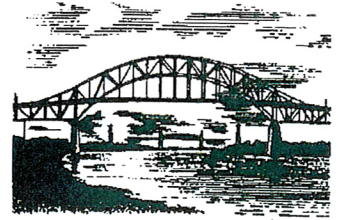


Terri A. Guarino  
Health Agent

## TOWN OF BOURNE BOARD OF HEALTH

24 Perry Avenue  
Buzzards Bay, MA 02532  
[www.townofbourne.com/health](http://www.townofbourne.com/health)  
Phone (508) 759-0600 ext. 1513  
Fax (508) 759-0679



### MINUTES August 12, 2019

Members in attendance: Kathleen Peterson, Chairperson; Stanley Andrews, Vice Chairperson; Galen Barlow Jr.; and Donald Uitti.

Support Staff in attendance: Terri Guarino, Health Agent; and Kayla Davis, Health Inspector.

### Meeting of the Board of Health was called to order at 7:00 pm

*Michael Rausch acknowledged he was recording audio. Bourne Community TV was present recording which will not be televised live, but aired at a later time.*

The Finance Committee admitted that they do not have a quorum at this time. The Bourne Energy and Advisory Committee and Board of Selectmen called their meetings to order. Mr. Stanley Andrews of the Bourne Landfill Business Model Working Group called the meeting to order and invited professional staff to present. Finance Committee had quorum and meeting is called to order.

### Joint Session of Bourne Board of Health, Bourne Landfill Business Model Working Group, Bourne Board of Selectmen, Bourne Finance Committee, and Bourne Energy Advisory Committee 7:03 pm

Mr. Daniel Barrett, General Manager of ISWM introduced landfill professional staff Phil Goddard and Asa Mintz, Operation Manager. Ray Quinn from SITEC Engineering was present who has been the Engineer for the facility since about 2000. George Aronson, Principal of CRMC introduced and presented power point attached hereto as Exhibit 1. Mr. Ken Ryan of SITEC presented as well. General discussion amongst boards and the public. The following agenda items were not deliberated on.

1. Discussion and possible vote about options for a final site development plan for the full 112-acre ISWM Department facility including, but not limited to; potential horizontal and vertical landfill expansions, permitting timelines, transfer stations and administrative and support facilities.
2. Discussion and possible vote regarding acquisition of two parcels of land for the purposes of mitigating Eastern Box Turtle habitat at the ISWM facility.
3. Discussion of future meeting schedule and agenda items.
4. Adjourn. Ms. Peterson called for a motion to adjourn the meeting of the Board of Health. Mr. Uitti made a motion to adjourn the meeting. Mr. Andrews seconded this motion. All were in favor and the meeting of the Board of Health adjourned at 8:16 pm.

Taped & Typed by Terri Guarino, Health Agent  
Edited by Syreeta Amaral, Secretary

Kathleen Peterson \_\_\_\_\_

Stanley Andrews \_\_\_\_\_

Galon Barlow Jr. \_\_\_\_\_

Don Uitti \_\_\_\_\_

Kelly Mastria \_\_\_\_\_



## Future Opportunities for Bourne's Integrated Solid Waste Management Facility

Presented to the Town of Bourne  
Board of Selectmen  
Board of Health  
Landfill Business Model Working Group  
Finance Committee  
Energy Advisory Committee

Daniel T. Barrett, General Manager, ISWM Department  
George Aronson, Principal, CRMC  
Ken Ryan, P.E., SITEC Environmental, Inc.

August 12, 2018

---

---

---

---

---

---

---

---

## Purpose of the joint meeting

- Like in 2010, we are at a decision point regarding the future of the ISWM business model and site development
- A joint meeting was invaluable to ISWM staff and provided clear direction that led to a successful business model
- Seeking guidance from leadership regarding options for future growth
- The timeline is tight in order to continue seamless landfill operations
- What do we need guidance on?
  - » Landfill expansion; horizontal and vertical
  - » Land acquisition to mitigate habitat impacts on 12-acre parcel

---

---

---

---

---

---

---

---

## Agenda

- Overview of opportunities at ISWM
  - » George Aronson, Principal of CRMC
    - Provided ISWM objective third-party review since 2002
    - Presented at joint meetings in 2010 and was instrumental in the previous RFP process and negotiations on the Site Lease and Development Agreement
    - Owner/Operator of multiple solid waste facilities
  - » Ken Ryan, P.E., SITEC Environmental, Inc.
    - Experienced engineer working on landfills in MA, including CMW in Carver
- Summary and Staff Recommendations
  - » Dan Barrett, ISWM Department, General Manager
- Schedule another meeting if needed

---

---

---

---

---

---

---

---



## Existing Business Model

- Accept Covanta ash supplemented by MSW and other solid wastes
  - » Developed strategy in 2010
  - » Signed agreements in 2012 (contract expires end of 2021)
  - » Arranged stable revenue for 2012 through 2021
  - » Permitted/built landfill airspace through 2024
  - » Secured MSW disposal for Bourne's MSW at SEMASS for 20 years from projected landfill closure (2022 - 2027)



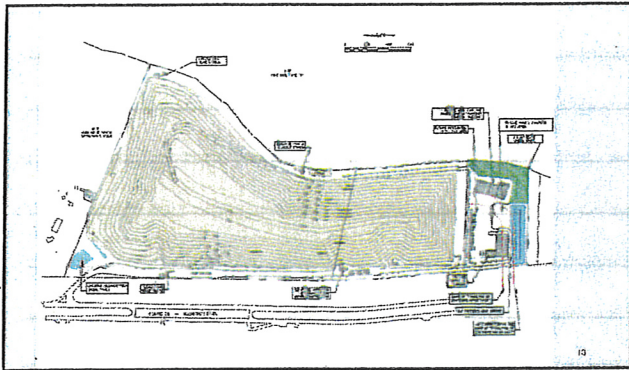
## ISWM Benefits To Taxpayers

- ~\$4.0 million per year in cash and services
  - » Free curbside collection of trash and recycling
  - » Subsidized residential recycling center (\$30 vs. \$250)
  - » Free disposal, recycling and composting (avoided costs)
  - » Host Community Fee
- ~\$2.5 million per year in contributions to ISWM Retained Earnings
  - » Debt reduction
  - » Closure and Post-closure funds
  - » Working Capital

## ISWM Benefits To Cape Cod

- 2007 responded to fire at SEMASS by taking MSW from the entire Cape with no financial or operation impacts to municipalities
- Ash disposal for SEMASS which helps municipalities that send MSW to SEMASS
- C&D transfer operations
- SSR transfer operations
- Short-term MSW capacity during summer months
- ISWM helps to keep pricing competitive






---

---

---

---

---

---

---

---




---

---

---

---

---

---

---

---

Minimum Build-out	
•	Extends landfill life into 2028
•	Full build-out of Phase 6 would be the last landfill phase <ul style="list-style-type: none"> <li>» Adds approximately 700,000 cubic yards of airspace to current Phase 6</li> <li>» Precludes southward expansion horizontally</li> </ul>
•	Existing liner construction could be modified now
•	ISWM would focus on transfer operations after 2028
•	Bourne's MSW would go to SEMASS via favorable agreement for 20 years

---

---

---

---

---

---

---

---



---

---

---

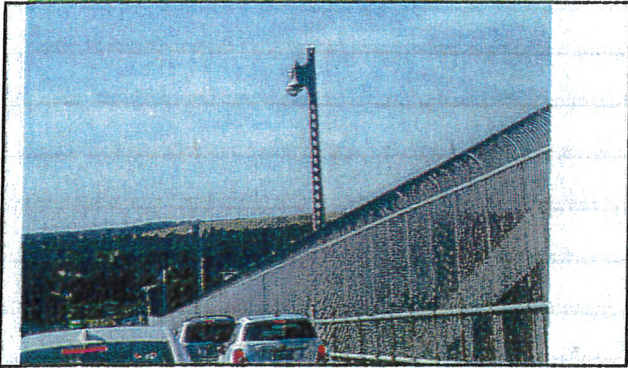
---

---

---

---

---



---

---

---

---

---

---

---

---



---

---

---

---

---

---

---

---





---

---

---

---

---

---

---

---



---

---

---

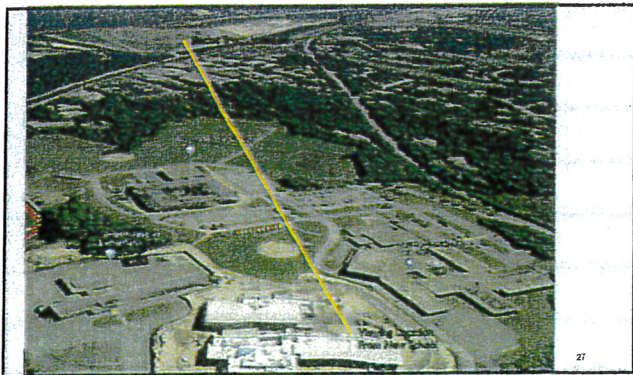
---

---

---

---

---



---

---

---

---

---

---

---

---



## Development Schedule

- February 2020
  - » Submit permit application to CCC
- May 2020
  - » Submit Site Suitability Reports to DEP: 25-acre, 12-acre
- August 2020
  - » Submit Site Assignment Modification(s) to Bourne Board of Health
- October 2020
  - » File Modified Site Assignment at the Registry of Deeds
- January 2021
  - » Pursue ATC for the next phase of the landfill

---

---

---

---

---

---

---

---

## Staff Recommendations

- Pursue final MEPA, CCC, MA DEP and Bourne Board of Health permitting pathways for Maximum Build-out plan
- Acquire mitigation land for the 12-acre parcel (town meeting)
- Garner support from Cape towns; elected officials, Town Administrators/Managers, DPW Superintendents
- Review options to extend Covanta disposal agreement to 2024
- Seek to extend agreement to send Bourne's MSW to SEMASS

---

---

---

---

---

---

---

---

## Board of Selectmen Guidance

- Vertical and horizontal landfill expansions
- Land acquisition for habitat mitigation of the 12-acre parcel
- Letter of support to be submitted to the CCC next year
- Communicate and garner support from Cape towns
- Schedule follow-up meetings if needed

---

---

---

---

---

---

---

---