



# Project Updates to the Board of Sewer Commissioners

CWMP Quarterly Update 3

Sewer Use Rules & Regulations

Cataumet Harbor WWTF Assessment



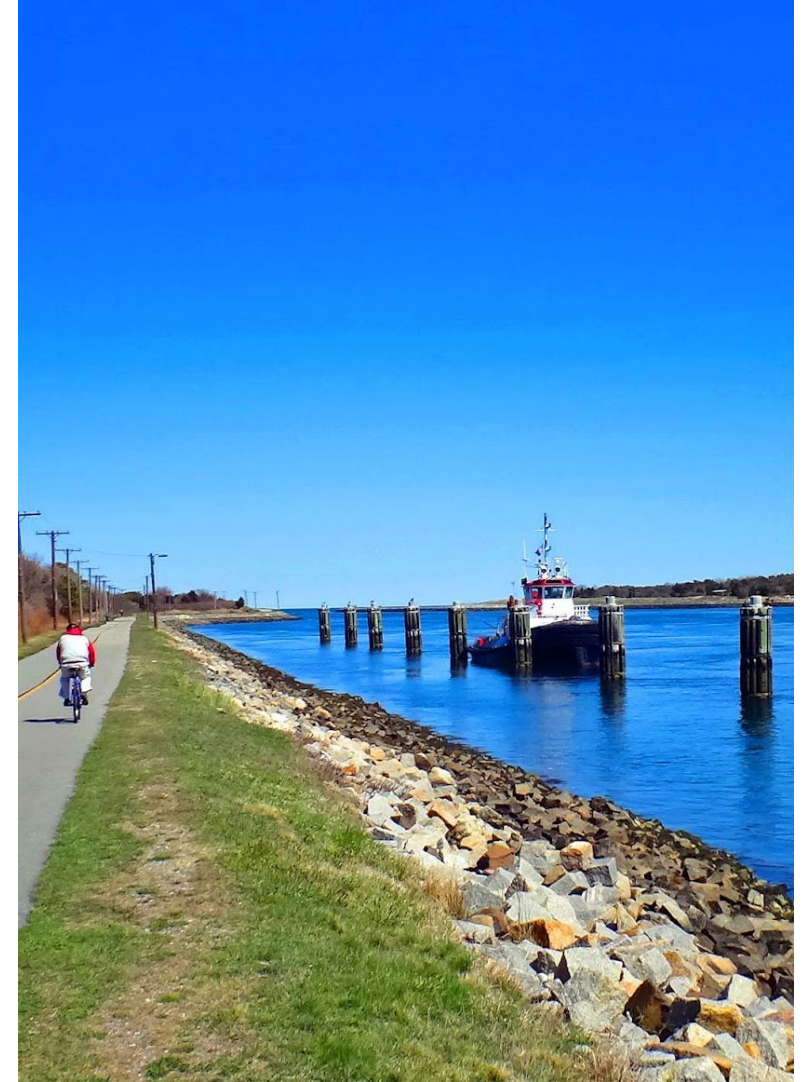
**March 29, 2022**

# CWMP Quarterly Update 3

Fall 2021 – Winter 2022

# Quarterly Update 3: Work Completed

- Draft Needs Assessment Completed
- Kicked off Alternatives Analysis
  - Evaluating Technologies best suited for Bourne
- Created goals for collaborating with reactivated Wastewater Advisory Committee (WWAC)

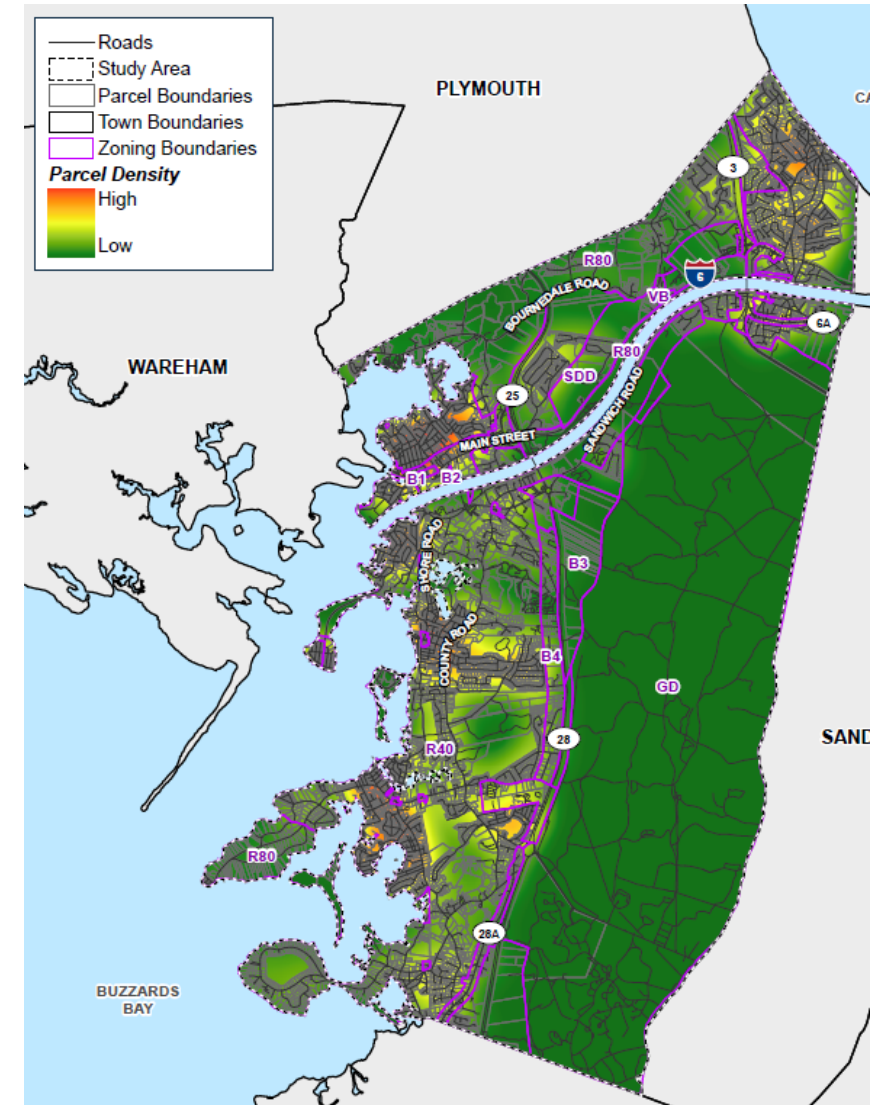


# Phase I: Needs Assessment Recap

- Study organized by watershed boundaries
- Analyzes current and future wastewater management needs using
  - Current zoning
  - Build-out based on current zoning
- Identifies nitrogen loading reduction requirements for all watersheds
  - With and without Nitrogen TMDLs

Embayment	Total Nitrogen Load Values, kg-N/year		Total Watershed Threshold kg-N/year	Total Load to Remove kg-N/yr.	Bourne's % Responsibility for Removal	Bourne Total Removal (kg-N/yr.)
	Wastewater	Total Load				
Megansett-Squeteague Harbor	7,611	11,658	1,446	1,446	39%	564
Phinneys Harbor	5,948	8,730	7,024	1,706	100%	1,706
Buttermilk Bay	4,058	5,610	4,208	1,402*	100%	1,402
Pocasset Harbor	7,958	12,479	9,359	3,120*	100%	3,120
Pocasset River	3,762	5,157	3,868	1,289*	100%	1,289
Buzzards Bay	16,830			4,208*	TBD	TBD
Cape Cod Canal	164,028			41,007*	TBD	TBD
Total						8,072

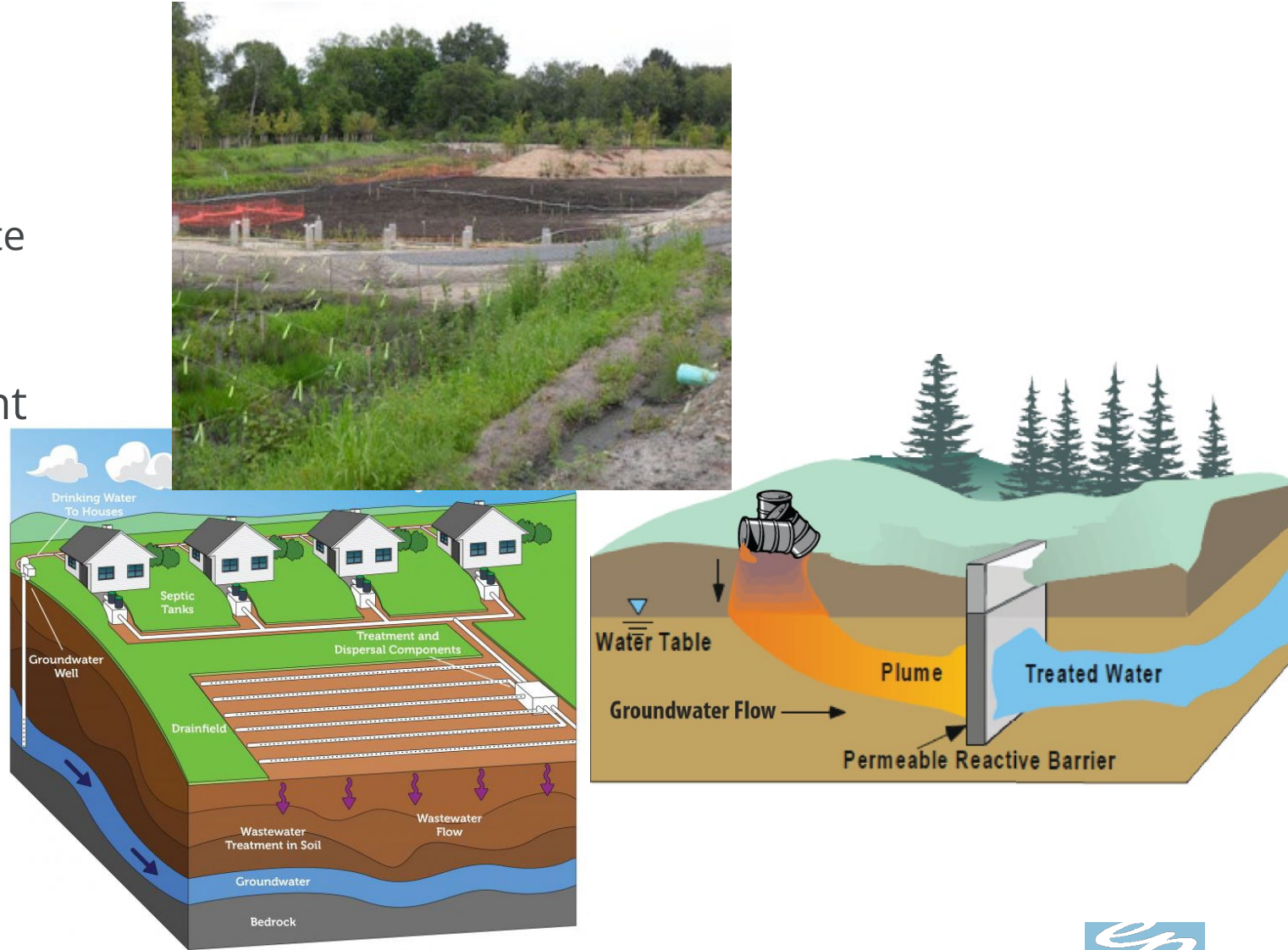
\*25% Removal assumed; Subject to change after MassDEP review



# Phase II: Alternatives Analysis – Identifying Technologies

- Onsite Systems
  - Conventional Title 5 Systems
  - Innovative Alternative (IA) Onsite Systems
  - Cluster Systems
- Traditional Wastewater Treatment and Sewer Collection Systems
- Stormwater Controls
- Innovative & Alternative
  - Permeable Reactive Barriers
  - Aquaculture
  - Urine Recycling
- Policies & Bylaws

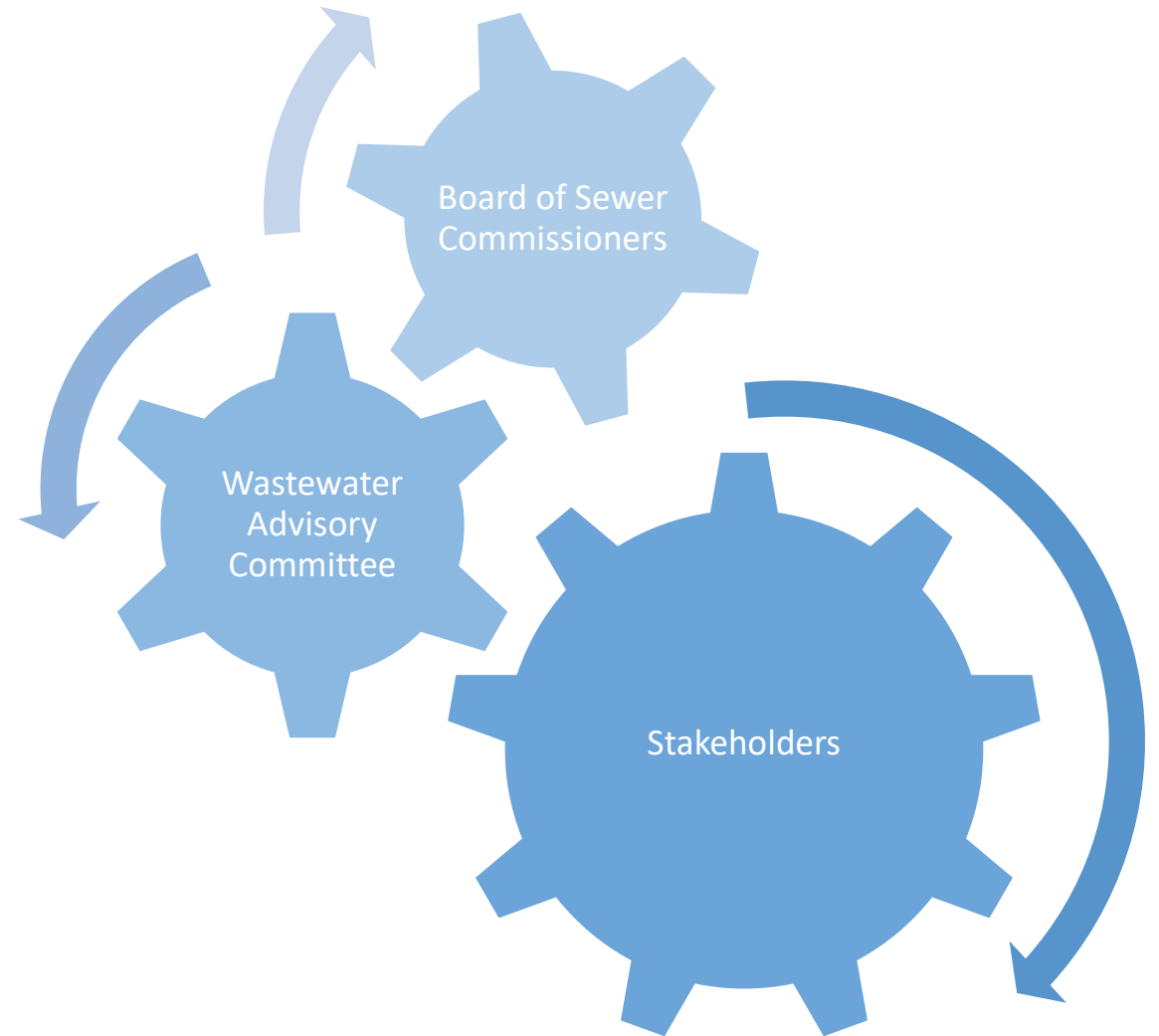
Image Sources: EPA, City of Cambridge MA





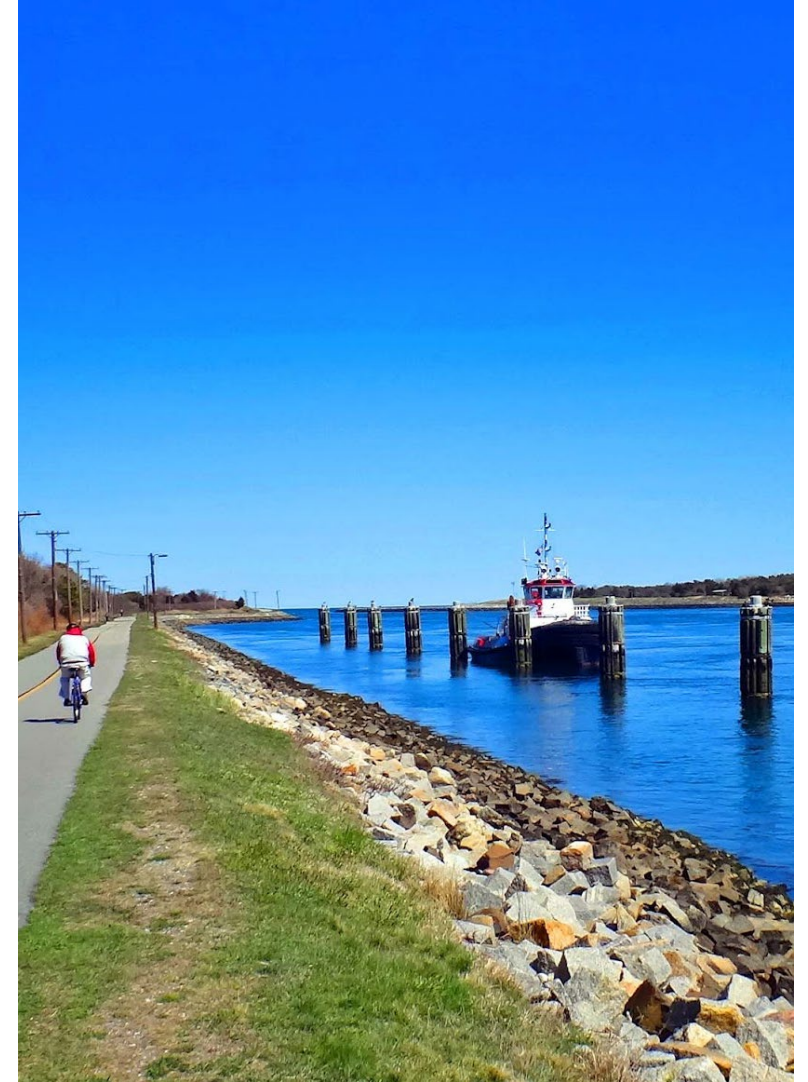
# WWAC Collaboration Goals

- First workshop on Monday, April 11th
- Input on Alternatives Analysis
  - Evaluation Criteria
  - Preferred Technologies
- Input on final recommendations

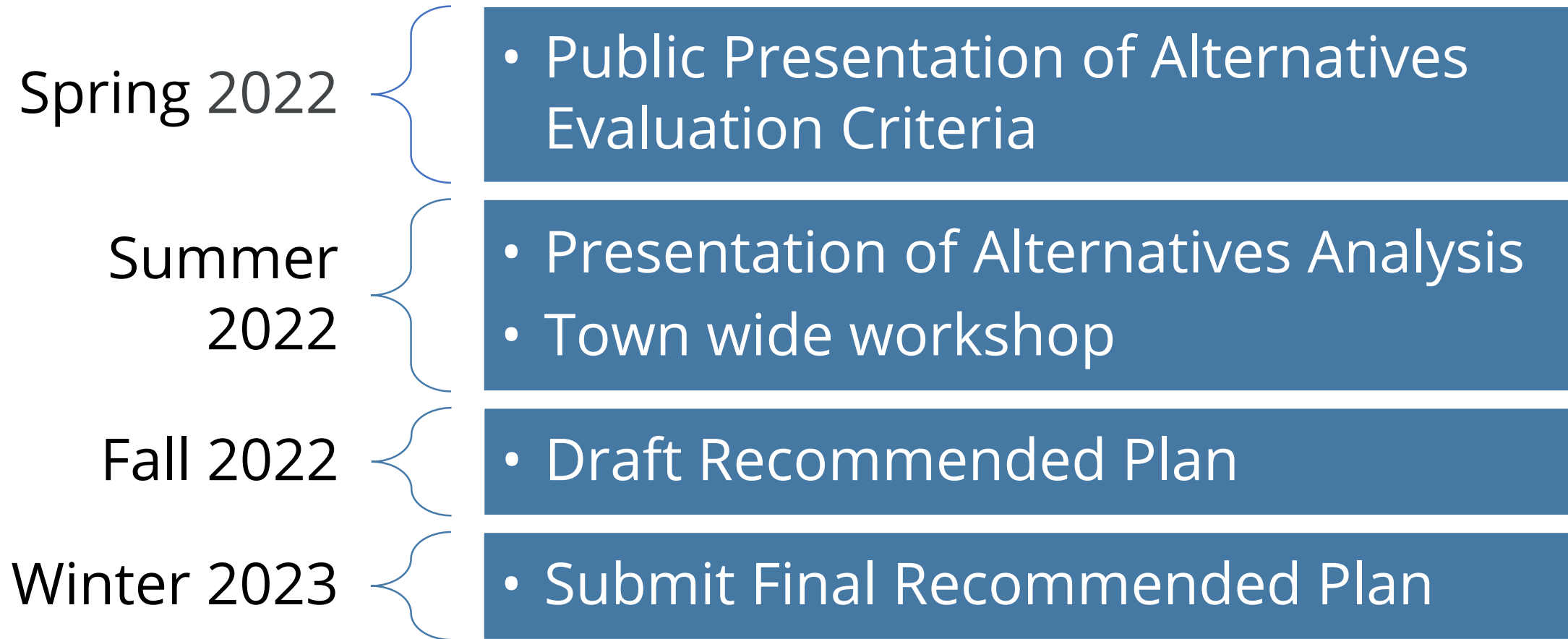


# Quarterly Update 3: Work Planned

- Meet with WWAC
  - Present Technology Matrix
  - Draft Evaluation Criteria
- Make Revisions to Draft Needs Assessment
- Draft Alternatives Analysis Memo
- Present Initial Results to community for Feedback in July



## Next Steps:





# Sewer Use Rules and Regulations

Status Update

# Sewer Use Rules and Regulations Update

- Policy Subcommittee met on 3/24 to review updates
- Refining fee and fine schedules
  - To be aided with findings from the Sewer Rate Study
- Reviewing the construction and connections requirements
  - Matching the changes with sewer design standards
- Next Policy Subcommittee meeting is Thursday, April 14th
  - EP to review standards again with Town Staff prior to the next meeting
  - EP to review Construction requirements section with Town Staff before next meeting



# Cataumet Harbor WWTF Assessment

Status Update

# Cataumet Harbor WWTF Assessment Update

- Phase 1 Assessment is 70% complete
- Site visit and review of Operation and Maintenance Records is complete
- Currently in the process of drafting the Technical Memorandum
  - Goal is to outline considerations for next steps in a potential transition plan
- Expect a meeting to review Draft Technical Memorandum with Town Staff by Mid-April



# THANK YOU

ENVIRONMENTAL  
 PARTNERS  
— An Apex Company —