

7A

2020 YEAR IN REVIEW

CAPE COD COMMISSION



CAPE COD
COMMISSION



From the Desk of the Executive Director



Kristy Senatori
Executive Director

2020 was a year that brought us numerable new and difficult challenges.

As we navigated a global pandemic, together we adapted to new health and safety regulations, learned new ways of engaging with the community, and transitioned successfully to conducting work in the virtual space. We continued to promote meaningful economic progress balanced with the environmental protections our region needs. We have been resilient through unexpected change.

The Commission was pleased to assist the region during these challenging times, developing a community alert heatmap system using the best available tools and information, a data dashboard with key statistics relative to pandemic recovery, and a municipal planning

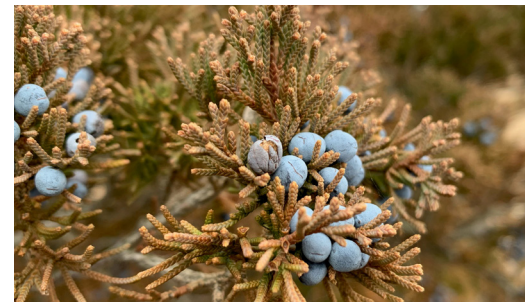
strategies toolkit with resources for planners and staff to help support the needs of local businesses. Using data collected through a series of business impact surveys, we are currently working to develop a regional Economic Resilience Plan that will help support the Cape Cod now and into the future.

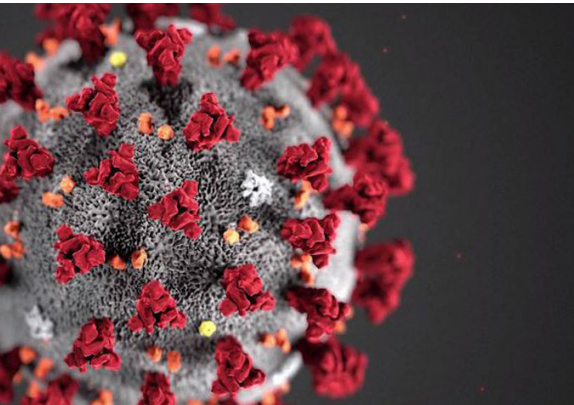
We initiated development of the first ever Cape Cod Climate Action Plan – a plan that is being created through significant data collection and analysis, meaningful stakeholder engagement, and mitigation and adaptation strategy development. Discussions throughout the process have been robust and thoughtful and we look forward to sharing the plan in the coming months.

This year the Commission had its 30th anniversary. The Cape Cod Commission Act was signed into law in 1990 and continues to be relevant and effective in protecting the unique values and quality of life on Cape Cod. We look forward to bringing the community together in 2021 to celebrate this milestone and to collaborate on solutions to the key issues facing our region.

The support and dedication of community leaders, Commission staff and members, and the residents of Cape Cod are vital to the success of our agency and mission of keeping a special place special.

I look forward to sharing brighter days with the people of Cape Cod in 2021.





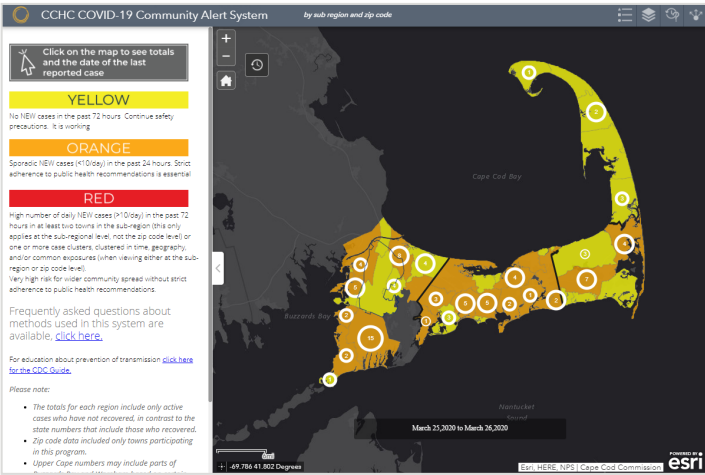
COVID-19 Pandemic Response

To help support the region during the COVID-19 pandemic, the Cape Cod Commission developed a number of new tools, resources, and strategies to assist residents, business owners, non-profit organizations, and municipalities. The Commission also received significant grant funds that will help the local and regional economy recover from the devastating impacts of the pandemic.

COVID-19 Heatmap Provides Online Resource for Pandemic Planning and Response

In early April, the Cape Cod Commission partnered with Cape Cod Healthcare and Barnstable County Department of Health and Environment to create an online COVID-19 community alert heatmap system showing numbers of confirmed cases of COVID-19 within Barnstable County. The application is intended to empower residents on Cape Cod to make informed choices about public health safety precautions to minimize the risk of infection and transmission of COVID-19 within the County.

Developing this application provided an opportunity to bring the strengths of different disciplines together in one place for the betterment of the region. Commission staff worked closely with Cape Cod Healthcare to design the



View and explore the map: capecodcommission.org/our-work/cape-cod-covid19

user interface, which displays dynamic data sets on both desktop and mobile platforms. The map includes COVID-19 patient case data managed by the Visiting Nurse Association (VNA) of Cape Cod. The data represents running totals for every zip code summa-

rized at the subregional level across Cape Cod and is classified using three color codes that represent infection risk potential. Individual zip code level data is available for participating towns. The data continues to be updated on a regular basis.

“Cape Cod is facing serious challenges due to the pandemic,” said Kristy Senatori, Executive Director of the Cape Cod Commission. “We look forward to supporting our communities and helping to strengthen our local economy as we respond to and address the economic impacts of the COVID-19 pandemic.”



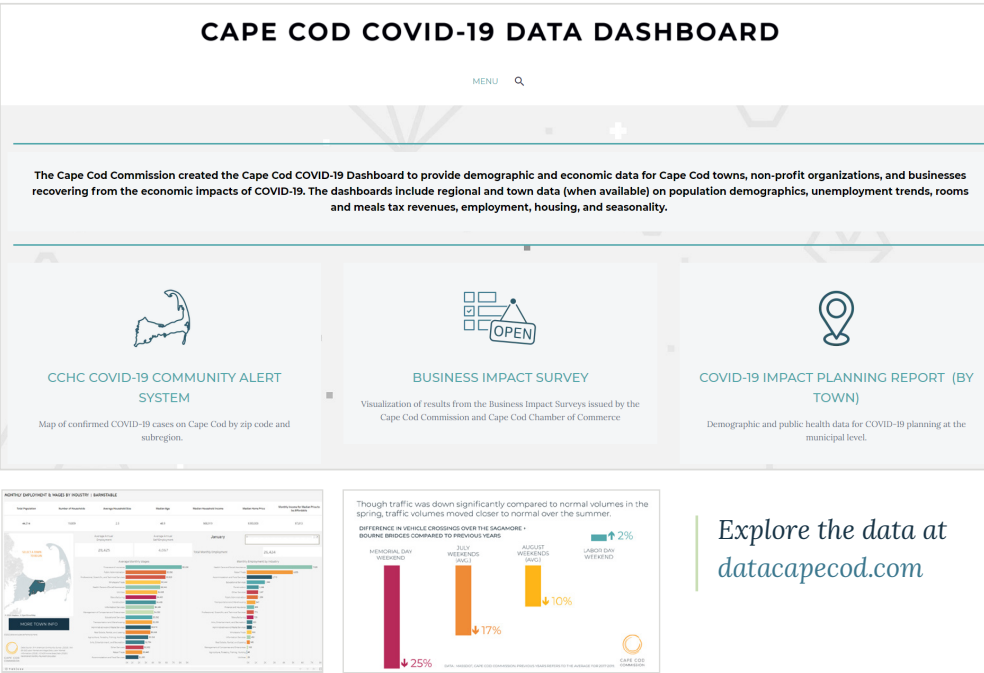
COVID-19 Municipal Planning Strategies Toolkit

Cape Cod’s local businesses and communities faced new and significant challenges opening and operating during the pandemic. To support municipal planners and staff, the Cape Cod Commission created resources related to COVID-19 and responding to community and business impacts.

The COVID-19 Municipal Planning Strategies Toolkit provides information for Cape Cod towns on how they can support the needs

of local businesses as they operate during this period of social distancing requirements. It contains strategies to accommodate the new operational standards and includes examples from other municipalities that have expanded opportunities for businesses to offer their goods and services during the COVID-19 pandemic.

View the toolkit and explore other resources: capecodcommission.org/our-work/covid-planning-resources



CAPE COD COVID-19 DATA DASHBOARD

The Cape Cod Covid-19 Data Dashboard provides demographic and economic data for Cape Cod towns, non-profit organizations, and businesses recovering from the economic impacts of COVID-19. The dashboards include regional and town data (when available) on population demographics, unemployment trends, rooms and meals tax revenues, employment, housing, and seasonality.



\$400,000 GRANT TO SUPPORT PANDEMIC RECOVERY AND RESILIENCY EFFORTS

The Cape Cod Commission received a \$400,000 Coronavirus Aid, Relief, and Economic Security (CARES) Act Recovery Assistance Grant from the US Department of Commerce’s Economic Development Administration to support efforts to respond and recover from the devastating economic impacts caused by the COVID-19 pandemic and develop strategies to improve resilience in the future.

Funding will be used to provide technical assistance to Cape Cod communities and regional partners and engage stakeholders in developing plans and strategies to diversify and strengthen the regional economy.

New Study Shows Economic Impact of Cape Cod's Harbors

In Spring 2020, the Cape Cod Commission and the Urban Harbors Institute set out to better understand the economic importance of maintaining the functionality of Cape Cod's harbors. Results of the study indicate that maintaining and/or enhancing harbor functionality should be a priority for coastal communities in order to secure and improve the economic benefits, including employment, of these indus-

tries. The towns that will be most successful in maintaining long-term functionality will also integrate planning for sea level rise, coastal flooding, and increasingly intense storms as climate change continues to impact the region's fragile coastline. The report concludes with a set of recommendations for towns, including maintaining functionality to support economic benefits of employ-



ment; integrating sea level rise impacts into planning efforts to minimize disruption to those benefits into the future; improving region-wide data collection on climate impacts and capital expenditures; and continuing to research other harbors to better articulate regional benefits.

The harbor survey focused on six harbors in four towns: Provincetown Harbor, Sesuit Harbor in Dennis, Stage Harbor and Aunt Lydia's Cove (Fish Pier) in Chatham, and Great Harbor and Inner Harbor in Falmouth. It was directed towards owners of businesses located along the coast or otherwise reliant on access to the harbors.

The final report and survey results are available at: capecodcommission.org/our-work/harbor-study/



Census 2020: Striving for a Complete Count

Understanding that our community must work collaboratively to ensure all residents are correctly counted in the 2020 US Census, the Cape Cod Commission, the Town of Barnstable, and Barnstable County partnered to establish the Cape Cod Complete Count Committee. The Complete Count Committee is a volunteer advisory committee representing a broad cross-section of Cape residents, leaders and organizations, bringing together those best suited to reach traditionally hard-to-count populations.

Supported by US Census Bureau staff and the Massachusetts Secretary of State's office, the Commission facilitated meetings with community leaders, working to connect with various sectors of the hard-to-count population. With the Census response extended through October, due to the effects of the pandemic, the Commission developed a public relations campaign, including radio ads, social media posts, print advertisements and direct mail to connect with citi-

zens across Cape Cod to ensure a complete count. Resources were widely distributed over the summer and included local voices with a Cape focus. Data collected through the Census determines the distribution of more than \$675 billion in federal funds every year to state and local governments. Government, businesses, and non-profit organizations also rely on the data that the census questions produce to make important decisions.

License Plate Grant Funds Awarded for COVID-19 Recovery and Resiliency Projects



The Barnstable County License Plate Grant Program, funded by proceeds from the sale of Cape Cod and Islands specialty license plates, supports regional priorities for economic development and achievement of long-term economic diversity and sustainability.

A special round of funding was made available to local or regional governmental or nonprofit agencies for projects that support recovery from the COVID-19 pandemic and resiliency to such impacts in the future. Projects selected for funding address a documented impact of the pandemic and align with and support implementation of the region's Comprehensive Economic Development Strategy (CEDS).

\$136,347 in license plate grant funds were awarded to six recipients: Sustainable Cape, Love Live Local for the Cape Cod Resilience Fund, Cape Cod Community College, Arts Foundation of Cape Cod, Cape Cod Young Professionals, and Lower Cape Community Development Corporation.

Economic Impacts of COVID-19 on Cape Cod Businesses

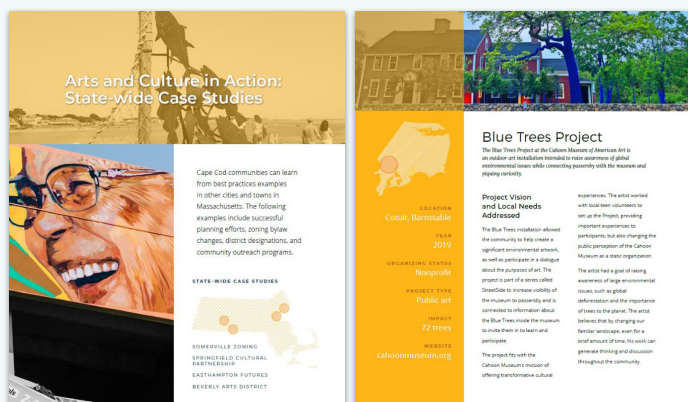


ECONOMIC IMPACTS OF COVID-19: CAPE COD BUSINESS SURVEY

The Cape Cod Commission and the Cape Cod Chamber of Commerce issued a series of online surveys to Cape Cod business owners to better understand the current and anticipated economic impacts of COVID-19. Data collected through the surveys support economic recovery and can be leveraged by businesses, towns, and other organizations in grant applications and reports.

Business owners were asked to share their experiences and answer specific questions on topics including business closure, revenue loss, seasonality, employment impacts, and the need for assistance.

Visualizations and a report on the survey results are available online at the Cape Cod COVID-19 Data Dashboard: datacapecod.com/second-business-impact-survey.



UPDATED ARTS AND CULTURE GUIDE

The Cape Cod Commission's updated arts and culture guide, "Leveraging Cultural Assets in Economic Development on Cape Cod," is intended to share best practices and lessons learned, inspire collaboration, support strategic planning, and build stronger ties between creativity and commerce. The updated guide provides an overview of the economic impact of the arts and culture sector, including information on employment and wages. It includes ways that arts are currently integrated into local and regional planning efforts, identifies resources for those working in the sector, and provides recommendations to support and expand impact over the next ten years.

See the updated guide at: cccom.link/arts-and-culture

The guide highlights sector challenges and opportunities for growth, providing case studies on Cape Cod and beyond.

Helping Towns Adapt to New COVID-19 Health and Safety Standards

The Cape Cod Commission provided technical assistance and guidance on grant opportunities allowing communities to adapt their transportation system to provide more space for pedestrian and bicyclists.

Commission staff helped towns improve infrastructure for cyclists with free bicycle racks and other related equipment through the Cape Cod Bike Rack Program. Staff also helped develop projects

and prepare applications for grant funds available through the Massachusetts Department of Transportation’s (MassDOT) Shared Streets and Spaces Grant Program.

The grant program provided assistance to help cities and towns engage residents and businesses to conceive, design, and execute shared streets and spaces that help comply with new health and safety regulations due to the COVID-19 pandemic.

Provincetown, Dennis, and Barnstable were each awarded funding that allowed them to support health and distancing with improvements like enhanced pedestrian spaces, additional public seating, and improved parking measures.

The Shared Winter Streets and Spaces program was announced in November, and several Cape towns applied for funding in this phase.



Enhanced pedestrian spaces along a new walkway in downtown Hyannis.

\$200 MILLION FOR TRANSPORTATION PROJECTS OVER THE NEXT FIVE YEARS

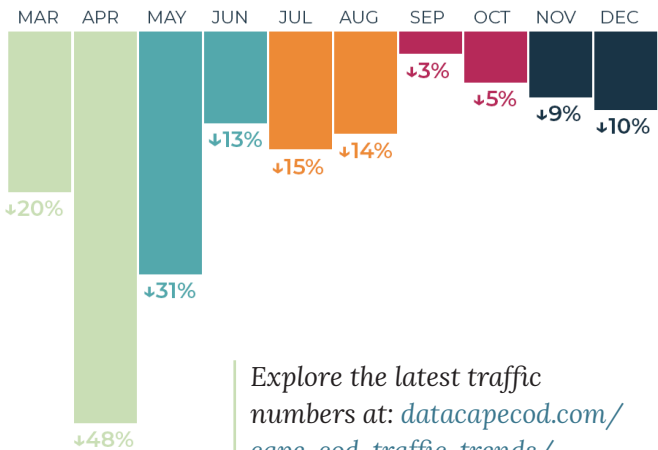
The 2021-2025 Transportation Improvement Program, adopted in May by the Cape Cod Metropolitan Planning Organization, includes over \$200 million in funded projects that will be implemented in the next five years. Highlights of the program include improvements to the Mashpee Rotary and Route 151; construction of a shared use path along Bearses Way in Barnstable; installation of a median along the Scenic Highway in Bourne; enhancement to Cape Cod Regional Transit Authority services; funding for Phase 1 of the Bourne Rail Trail; and Route 28 reconstruction in Dennis and Harwich.

Pandemic Impacts Cape Traffic Trends

In addition to normal traffic tracking work, this year Commission staff has been examining impacts to traffic related to the pandemic.

Traffic counts show that once schools and businesses began to close in March, volume over the Bourne and Sagamore bridges dropped significantly. Labor Day weekend saw an uptick in travel, with volume up over both bridges. Bike path traffic along the Cape Cod Rail Trail continues to be higher than in 2019.

DIFFERENCE IN VEHICLE CROSSINGS OVER THE SAGAMORE + BOURNE BRIDGES AS COMPARED TO 2019



Explore the latest traffic numbers at: datacapecod.com/cape-cod-traffic-trends/

Cape Cod Commission and The Canal Bridges: Role in Reconstruction

In April, the U.S. Army Corps of Engineers announced support of a recommendation to replace the aging Bourne and Sagamore Bridges. Instead of major rehabilitations that would require extensive bridge and lane closures, the recommendation is to replace the nearly 80-year-old structures with new bridges, at an estimated cost of over \$1 billion with associated approach improvements.

The next phase of the project includes evaluation of bridge type, design, and location as well as funding strategies for the two new bridges.

Cape Cod Commission staff shared its regional planning work, contributed data on population and visitation to the Army Corps' initial studies, and has served as technical advisors. The Commission also works closely with MassDOT, which will be leading efforts to connect the new bridges to existing roadways.



Public outreach and engagement with local towns and citizens is paramount as the project moves forward. The Commission will assist the Army Corps and MassDOT with connecting citizens and key stakeholders with critical information. The Cape Cod Metropolitan Planning Organization anticipates updates from the Army Corps and MassDOT as the project progresses.

Links to the studies and further information are available at: capecodcommission.org/canal



CAPE RAIL STUDY PROCESS BEGINS

A new study that will examine options to extend passenger rail service to Cape Cod with connections to the communities of Middleborough and Wareham began in November. The Cape Rail Study, led by MassDOT and assisted by a consultant team, will also provide the region with critical data and information. The first advisory group meeting for the Cape Rail Study was hosted by the Cape Cod Metropolitan Planning Organization (MPO) on November 19, 2020. The advisory group will be the driving force in the development of the study. It comprises a wide range of community representatives, including regional elected officials, municipal staff, and leaders from the transportation, business, tourism, and education sectors.

See more about the study at: capecodcommission.org/our-work/cape-rail-study/



CREATING COMPLETE STREETS

With funding provided by the Massachusetts Department of Transportation, the Cape Cod Commission provides technical services to Cape Cod towns wishing to develop a Complete Streets plan. A Complete Street is one that provides safe and accessible options for all travel modes – walking, biking, transit and vehicles – for people of all ages and abilities.

This year, the Cape Cod Commission completed a draft plan for Orleans and began work with the towns of Bourne, Falmouth, and Brewster. A Complete Streets prioritization plan helps towns gain access to state and federal funding.

Cape Cod Commission Collaborates to Create a Cape Cod Climate Action Plan

The Cape Cod Commission is in the process of creating Cape Cod’s first-ever climate action plan, a strategic framework that details the policies and actions necessary to reduce greenhouse gas emissions, adapt to existing climate hazards, and track progress.

Our region is vulnerable to sea level rise, storm surge and flooding, erosion, and damaging winds. The hazards we face can cause loss of life, damage buildings and infrastructure, impair coastal environments, all impacting our community’s economic, social, and environmental well-being.

A climate action plan for the region will set forward a clear path and framework for adapting to and mitigating the causes of climate change through development of specific and measurable actions and recommendations at a variety of scales.

The process began in October 2019 with a series of sub-regional community meetings.

Climate Action Plan

Through collaborations with stakeholders and partners, the Commission is developing an action plan to address the critical challenges posed by climate change.

Staff worked with 150 stakeholders from across Cape Cod to better understand actions taken to date, structure a stakeholder process, and identify priorities for development of a climate action plan. The Commission hired the Consensus Building Institute to facilitate stakeholder discussions.

Beginning in October 2020, subregional municipal working groups and stakeholder

working groups met in multiple sessions to discuss Cape-specific greenhouse gas emissions and climate impacts, identify strategies and actions, and contribute to development of the climate action plan. Stakeholder working groups convened on the topics of energy, transportation, housing and development, and natural resources and working lands. The Commission also worked with eight non-profit organizations in the region to gather additional input through focus groups, and better understand the intersections between their organizational priorities and climate action.

In addition to the stakeholder process, the Commission worked with consultants to complete a fiscal and economic impact analysis, as well as a legal and jurisdictional analysis, and collect data through a public survey, among other efforts that will contribute to the climate action plan. A draft plan will be complete in early 2021.



SERIES HIGHLIGHTS LOCAL CLIMATE ACTION

The Commission’s first podcast series highlights the work of the agency and its community partners to build resiliency to climate change in our region.

Listen: capecodcommission.org/our-work/cape-cod-climate-action-podcast/



CLIMATE ACTION TIMELINE

A compilation of organizations, reports, and events that have helped shape and advance the recognition and understanding of climate change.

Explore: capecodcommission.org/our-work/climate-change-action-timeline/

Regional Greenhouse Gas Inventory Complete

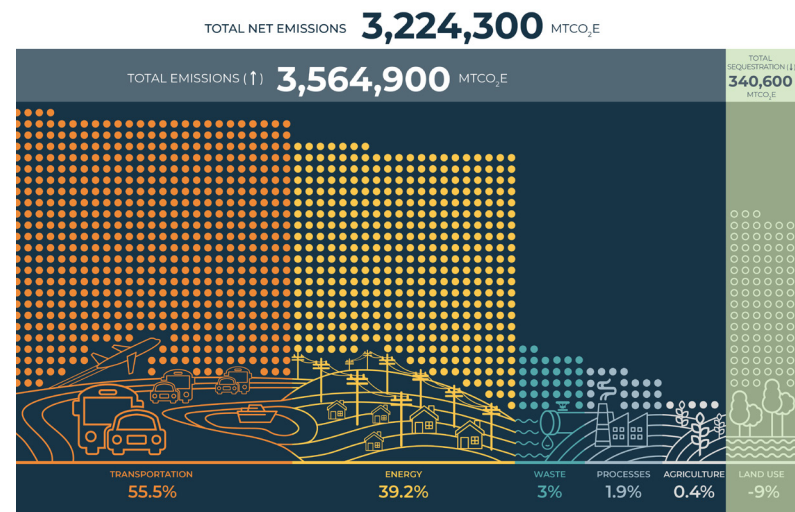
Cape Cod Commission staff compiled a greenhouse gas (GHG) emissions inventory for a baseline year of 2017, following the Intergovernmental Panel on Climate Change (IPCC) Guidelines for National Greenhouse Gas Inventories, which focuses on GHG emissions and removals from man-made sources and activities.

A GHG inventory is a comprehensive accounting of total greenhouse gas emissions for all man-made sources. The Cape Cod inventory provides a complete

picture of GHG emissions from the region, identifies high emissions sectors, and establishes an accounting method that is comparable and reproducible so emissions can be measured going forward.

Using local, state, and federal data, the inventory calculated emissions of carbon dioxide, methane, nitrous oxide, hydrofluorocarbons, perfluorocarbons, and sulfur hexafluoride from six sectors: stationary energy (building energy use), transportation, industrial processes and product use, agriculture, waste, and land use.

This baseline can provide communities with the information to understand the contributing factors to Cape Cod's GHG emissions. The inventory has pro-



vided the Commission with the baseline necessary to support development of the Cape Cod Climate Action Plan. Data was integrated into the planning process to help identify measures and strategies to reduce GHG emissions and mitigate the impacts of

climate change on the region.

Learn more at: capecodcommission.org/our-work/climate-action-plan/greenhouse-gas-emissions-inventory/

ALL 15 CAPE COD TOWNS ACHIEVE MVP STATUS

The state's Municipal Vulnerability Preparedness (MVP) Program provides support for cities and towns to plan for climate change resiliency and implement priority projects. As of June 2020, all 15 Cape Cod towns are designated MVP communities.

The Cape Cod Commission, in cooperation with the Cape Cod Cooperative Extension, assisted several Cape Cod towns with the MVP planning process to understand the impacts of natural hazards and a changing cli-

mate, and to develop priority actions to improve the community's resilience to these threats.

Workshops were attended by town staff representing a wide variety of departments, public safety officials, appointed committee members, concerned citizens, and other community stakeholders. Through these workshops, towns identified hazards such as flooding, winter storms, erosion, sea level rise, and temperature changes that have the

potential to threaten infrastructure, human health, and the environment. Initiatives such as vulnerability assessments, feasibility studies, infrastructure improvements, and better communication were also identified through the workshop process.

These community strengths, vulnerabilities, and priority actions were compiled into reports that were approved by each community and certified by the state.



All Cape Cod towns are now designated MVP communities and eligible for MVP Action Grants and other funding opportunities

Developing a Solar Screening Tool for the Region

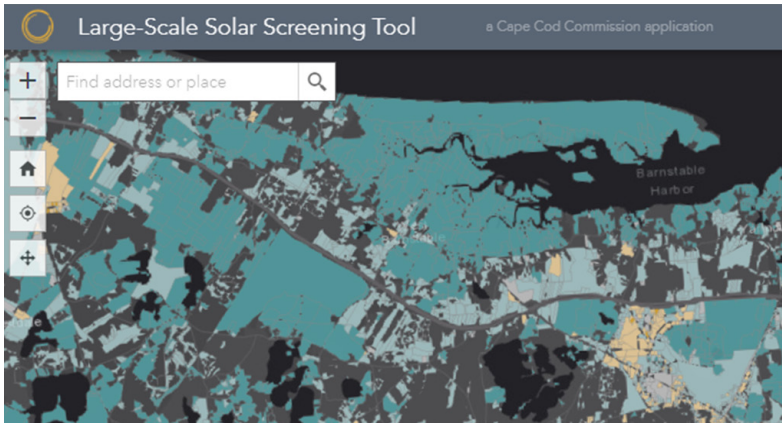
Created by Commission staff and reviewed by a group of external stakeholders and potential users, the Large Scale Solar Screening Tool is designed to help guide projects toward appropriate areas and away from important conservation areas.

The tool considers both built and natural environments to identify areas more or less appropriate for solar development. It is designed for use by anyone interested in

developing or reviewing large-scale solar facilities.

Within the map tool, parcels are color-coded based on their built and natural features. While parcels with more natural features may be less appropriate for large-scale ground-mounted solar arrays, sizable built features present on these parcels may be appropriate for solar photovoltaic (PV) installations. Built and natural feature layers are provided as well as contextual features, all for use in helping inform the siting of solar PV projects on Cape Cod.

The tool, created using ESRI's ArcGIS software suite, was pre-



An application designed to assist in appropriate siting of large-scale solar photovoltaic projects. Watch the explainer video: youtu.be/_96H3_tyvek

viewed during the Northeast Arc Users Group (NEARC) conference held virtually on November 16. It won recognition at NEARC for

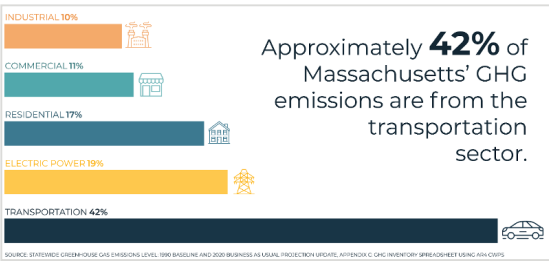
most impressive use of GIS for analysis or to solve a problem.

View the app: arcg.is/1rvj5v

Siting Electric Vehicle Charging Stations

The transportation sector accounts for the largest portion of greenhouse gas emissions (GHG) in Massachusetts. One way to reduce GHG emissions and slow the rate of climate change is to support the increased adoption of electric vehicles (EV) and the infrastructure necessary for their use, such as publicly available EV charging stations. Because their fuel source is electricity, rather than fossil-fuel based gasoline, EVs do not directly produce tailpipe emissions of GHGs.

The 2018 Regional Policy Plan recommended the Commission complete a GIS screening analysis of potential EV charging station locations. Commission staff have completed this analysis. This analysis includes information on the current state of electric vehicle charging stations on the Cape,



such as the types of locations that currently host charging stations, an interactive map representing the distribution of the network across Cape Cod, and identification of areas suitable for future infrastructure.

Additional information can be found at: story-maps.arcgis.com/stories/ed59c9714aff4b1298d31d77fdd0d915

REGIONAL POLICY PLAN CLIMATE CHANGE ACTIONS

The Regional Policy Plan (RPP) identifies climate change as one of the key challenges facing the region. It includes a section on climate change response, readiness, and mitigation and planning actions that support creation of the Solar Screening Tool, development of the EV Charging Station Siting Analysis, advance Green Community designations, and develop a baseline of greenhouse gas emissions that will help communities better understand opportunities for mitigation.

Cape Cod Commission Receives \$1 Million Federal Grant to Support Resiliency Efforts on Cape Cod

In April, the Cape Cod Commission was awarded a \$1 million grant through the United States Department of Commerce's Economic Development Administration (EDA) to develop and implement a multi-pronged planning initiative to help address Barnstable County's vulnerability to storm induced impacts.

This major investment from the EDA will help the region devise and implement long-term economic recovery strategies and identify and plan for future economic challenges.

The project aims to provide data and information that allows communities to better prepare for and respond to impacts, develop a framework for improving resiliency, and create tools

"Our administration is dedicated to working with municipalities to build resilience and protect people and property, and this grant from the U.S. Department of Commerce will build on those efforts to ensure Barnstable County communities are prepared for future impacts of extreme weather."

– Massachusetts Governor Charlie Baker –

to promote better local decisions regarding critical vulnerable assets.

Enhancing and developing digital map layers and decision support tools will facilitate high-impact, targeted implementation projects and improve planning efforts for all 15 towns on Cape Cod. The work proposed will help communities determine effective approaches to

address the risks faced today and implement initiatives to reduce impacts moving forward.

Proposed work will build on the priorities identified by many Cape Cod towns through the Municipal Vulnerability Preparedness (MVP) planning process by supporting assessments, feasibility studies, and solutions for low-lying roads.

The Commission engaged Eastern Research Group, Inc. and Synapse Energy Economics, Inc. to assess the economic impacts of coastal hazards, such as sea level rise and storm surge on Cape Cod. This analysis will address a wide range of impacts on jobs, tax revenues, infrastructure, public health, tourism, and ecosystem services provided by our salt marshes and eelgrass.

The funds will also provide an opportunity to develop regional design guidelines for buildings in flood hazard areas, which will highlight appropriate ways to reduce or eliminate hazards while also protecting the region's distinctive character and historic resources.

Model Coastal Resiliency Bylaw Underway

A model coastal resiliency bylaw designed to help Cape Cod towns better manage the impacts of climate change is under development.

This is a key component of the Cape Cod Commission's climate work, and a critical follow-up to the MVP Program planning the agency has done with many towns in the region. This



project provides a unique opportunity to consider and advance the use of existing zoning to promote more resilient practices.

To create the model bylaw, the Cape Cod Commission is working with four partner towns - Bourne, Sandwich, Eastham, and

Brewster - and has contracted with the Urban Harbors Institute (UHI). UHI has assembled a team of experts comprised of coastal floodplain and erosion specialists, those with expertise in preserving historic character and the elements of historic structures, and legal and policy specialists with expertise in coastal resiliency issues.

The work is funded through grants received from the state Office of Energy and Environmental Affairs and through the federal Economic Development Administration.



Updating the Downtown Hyannis Design and Infrastructure Plan

Cape Cod Commission staff developed a report that identifies potential design guidelines, zoning changes, and infrastructure improvements for neighborhoods within the downtown Hyannis Growth Incentive Zone (GIZ). This is the first step towards an updated Downtown Hyannis Design and Infrastructure Plan.

This report identifies different neighborhoods within the GIZ, design features that define each area, and challenges to maintaining each neighborhood's desired character. It recommends zoning or design review standards to enhance each neighborhoods' character and address its key challenges. The report also acknowledges the importance of historic resources within the GIZ and incorporates

lessons learned from recent developments into recommendations to improve design regulations and address infrastructure constraints in each of the neighborhoods.

The recommendations and considerations will ultimately be reflected in a new Design and Infrastructure Plan that outlines a clear design review and permitting process, with coordination between zoning and dimensional regulations, historic district review, and public and private investments in infrastructure. The report also includes a one-page Development Checklist that town board members, staff, and developers can use to evaluate the design of development proposals and help ensure they enhance and support the character of downtown Hyannis.

DEVELOPING A WAYFINDING PLAN FOR DOWNTOWN ORLEANS

The Cape Cod Commission worked with the Orleans Planning Board in 2020 to develop a wayfinding plan for key destinations in and around downtown Orleans.

Wayfinding is a system of visual cues such as signs, landscaping, pavement markings, or other objects that help people orient themselves in physical space and navigate from place to place.

The project will produce recommendations for wayfinding signage or pavement treatments, as well as possible technological options that could help facilitate improved movement for motorists, pedestrians, and bicyclists downtown, while highlighting Orleans' special character and features.

The Orleans wayfinding plan aims to provide better navigation for drivers, pedestrians, and bicyclists





Cape Cod Commission Assists in Creating New Guide to Floodplain Regulations and Historic Structures

The Cape Cod Commission, Cape Cod Cooperative Extension, and Woods Hole Sea Grant created a new guide to floodplain regulations and historic structures in Massachusetts that aims to clarify common questions and help identify when structures are eligible for exemption from the Substantial Improvement and Substantial Damage floodplain requirements.

Currently, Commission staff are working to develop design guidelines that can be used by local towns to help ensure consistency in flood hazard areas across the region. This new guide and the forthcoming guidelines will help communities and property owners plan for the future and make educated decisions about what is best for their community.

Reducing Solid Waste Costs on Cape Cod

Towns across the Cape are seeing municipal solid waste (MSW) disposal costs rise due to diminishing regional disposal options, and recycling capacity decrease due to the lack of available markets that process these materials. The Cape Cod Commission, working with Barnstable County and the Cape Cod Cooperative Extension, solicited two studies to help towns plan for future MSW management.

One study examines options and costs to divert household recyclables and hard to dispose materials, like mattresses and textiles, for reuse and recycling, so that they are diverted from landfill

or incinerator disposal. The study will examine on-Cape options to collect and process materials for eventual reuse and recycling and will identify potential markets for processed materials.

Another study will provide a cost /benefit analysis for transportation and disposal options of remaining solid waste that cannot be reduced, reused, recycled or repurposed and must be transported to a disposal facility such as a traditional landfill or waste incinerator. The analysis will examine innovative disposal options on Cape Cod and traditional disposal options for out-of-state disposal.

On-Cape opportunities to collect, process, and recycle materials at Joint Base Cape Cod UCRTS, Bourne Integrated Solid Waste Management facility, and Yarmouth Transfer Station will be examined as part of the study



FORM BASED CODE WORKSHOP

Nearly 50 municipal officials and staff from 12 Cape Cod towns came together on February 10 for a workshop organized by the Housing Assistance Corporation on using form-based code. Form-based code is a tool to enable communities to create zoning that encourages the development of the types of housing that could help ease the region's housing crisis. Commission Executive Director Kristy Senatori and Chief Planner Chloe Schaefer kicked off the workshop with presentations on the housing challenge facing the region and some of the work the Commission has done to address it, including the Community Resiliency by Design project.

See more about the project at: capecodcommission.org/crbd

Cape Cod and Islands Water Protection Fund



From July 2019 through August 2020, the Cape Cod and Islands Water Protection Fund (CCI-WPF) generated \$10.9 million to help Cape Cod and the Islands pay for necessary wastewater infrastructure and water quality remediation projects.

Established by the Massachusetts Legislature in 2018, the CCIWPF is a dedicated fund within the state’s Clean Water Trust, set up to benefit communities in Barnstable, Dukes, and Nantucket Counties. Creation of the CCIWPF was the result of efforts by a diverse set of stakeholders who recognized the need for new financial tools to address the region’s degrading water quality and lack of wastewater infrastructure.

Its source of revenue is a 2.75% excise tax on traditional lodging and short-term rentals.

The fund is administered by the existing Clean Water Trust and overseen by a management board comprised of representation from every member town, executive directors of the Cape Cod Commission and Martha’s Vineyard Commission, and the Nantucket Town Manager. Currently, the 15 Cape Cod communities are members of the fund.

New regulations governing fund distribution were approved in October. These regulations guide the way in which funds are awarded to eligible member communities working to develop

and implement wastewater and water quality projects.

Projects eligible for funding include innovative strategies and alternative septic system technologies, the completion and update of water quality and wastewater management plans, the construction of sewer collection systems and wastewater treatment plants, and the implementation of drainage improvements and water treatment programs to improve water quality in freshwater ponds and marine resources. Member communities must go through the State Revolving Fund, or SRF, program to receive CCIWPF funds.

STORMWATER UPDATES TO THE TECHNOLOGIES MATRIX

The Cape Cod Commission’s Technologies Matrix is a single source of the most up to date information on nutrient management technologies. It serves as a planning and evaluation tool for town staff, consultants, and experts; and an informational tool for interested stakeholders and the public.

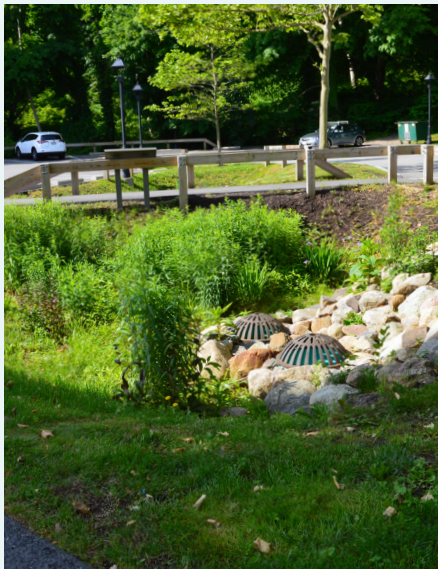
The Matrix was originally published in 2015 after two years of research by Commission

staff and private consultants, review by a panel of experts, and vetting by State, Federal, and other stakeholders.

The 2020 update to the Technologies Matrix incorporates new information regarding the performance of stormwater technologies. These updates will help practitioners choose stormwater control measures by providing information on the expected range of nitrogen

and/or phosphorus removal. Design choices are included to help optimize stormwater management approaches already selected for other reasons or purposes.

The Technologies Matrix summarizes information that can help Cape Cod communities evaluate various nutrient mitigation strategies to address their water quality issues and inform adaptive management.

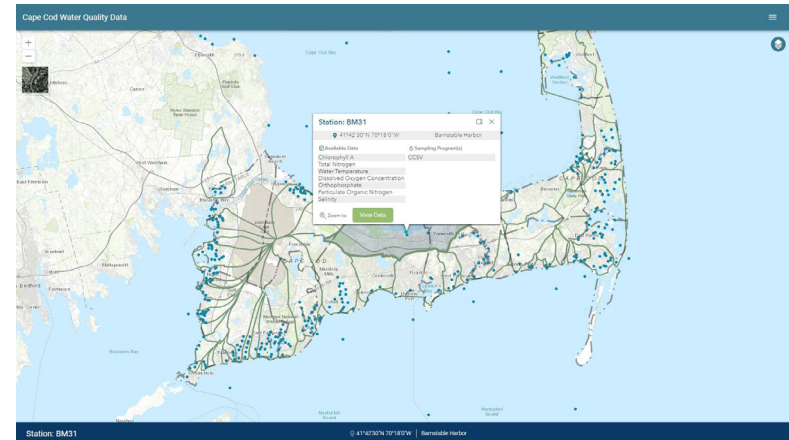


Regional Water Quality Monitoring Database Takes Shape

In 2018 the Cape Cod Commission and partners were awarded a Southeast New England Program (SNEP) Watershed Grant to improve the recording, management and translation of water quality monitoring data on Cape Cod. This work builds on the Commission's efforts to establish a regional database that makes monitoring data easily accessible from a single location.

Over the past year Commission and partner staff have worked

with an End User Group through a series of virtual meetings to establish a framework for the monitoring database and web interface. The feedback provided has informed the development team as they build out the water quality database, establish data protocols, and create analysis scripts. The regional water quality monitoring database will include new methods for data analysis, evaluation, reporting, and translation to improve understanding of water



The water quality database includes new methods for analysis, evaluation, and reporting to improve understanding of water quality trends

quality trends and better integrate results into local planning and policy development, creating a path forward for the pro-

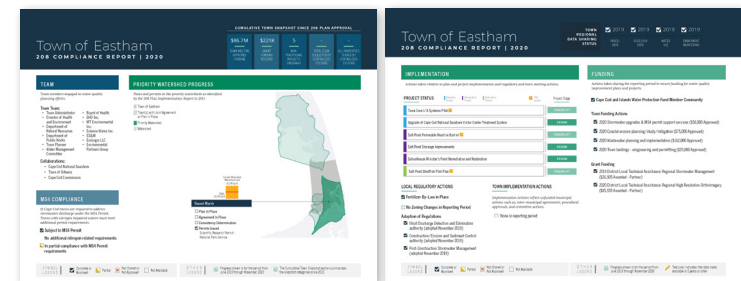
vision of data and information that will serve the 15 Cape Cod communities and the region well into the future.

SNEP NETWORK MAKES PROGRESS IN FIRST YEAR

The Southeast New England Network (SNEP Network) is a grant-funded partnership among 15 environmental organizations, academic institutions, regional planners, and consultants (including the Cape Cod Commission) who work collaboratively to provide stormwater planning and technical expertise within the watersheds of Southeastern Massachusetts and Rhode Island.

In Spring 2020, the Town of Bourne and the four Pleasant Bay Alliance communities received technical assistance awards from

the SNEP Network. The Pleasant Bay Alliance will receive assistance with a review of land use regulations and stormwater bylaws in its four member towns. Bourne will receive assistance with the development of a coastal resilience action strategy and sustainable and scalable financing options. Other work includes a review of local ordinances and bylaws pertaining to stormwater, a stormwater resource inventory, and development of a regional runoff and pollutant load mapping tool.



COMPLIANCE REPORTS ISSUED

As the Commission tracks implementation of the 208 Plan Update, it has committed to developing annual compliance reports that document local progress. 2020 compliance reports were issued in December with criteria that was refined through feedback from the Cape Cod Water Protection Collaborative, MassDEP, and US EPA. The reports document water quality funding, intermunicipal agreements and permits in priority watersheds, status of water quality projects, and all town actions on wastewater and water quality.

Herring River Restoration - Phase One Approved

A project to restore habitat and re-establish tidal flow within the Herring River estuary and floodplain system in Truro and Wellfleet is moving forward. On June 11, 2020, the Cape Cod Commission granted Development of Regional Impact approval to Phase One of the project.

Approximately 570 acres will be restored during Phase One, located mostly within the Cape Cod National Seashore. Tidal flow will be restored through the installation of various new tide control structures, and a new Chequessett Neck bridge. The project aims



to restore the area and create a healthy, productive salt marsh, which is a vital component of a healthy ecosystem.



Salt marshes can help prevent flooding by absorbing excess rainwater. They also act as a buffer, protecting our shorelines from erosion. Additionally, salt marshes filter stormwater runoff and excess nutrients, helping to promote clean water.

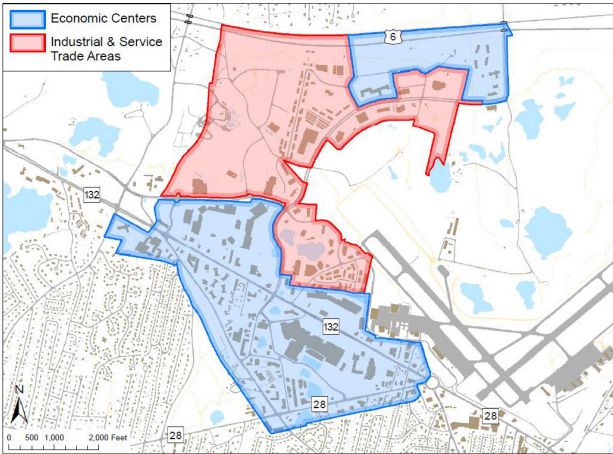


MASHPEE COMMONS BEGINS DEVELOPMENT AGREEMENT PROCESS

Mashpee Commons plans to develop nearly 187 acres of its land over the next seven years, adding more retail and housing. The project moved forward in March 2020, when the Cape Cod Commission approved a Development Agreement that includes the Town of Mashpee, Mashpee Commons, and the Cape Cod Commission and streamlines future negotiations.

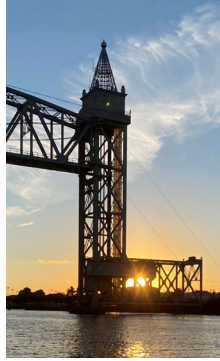
Expanding the Economic and Industrial Trade Center in Barnstable

In order to facilitate the growth of year-round living wage jobs on Cape Cod and to promote economic sustainability, the Town of Barnstable applied to the Cape Cod Commission to modify its 2019 "Chapter H" decision that designated the Greater Hyannis Economic Center and Industrial Trade Center.



The amendment sought to add wholesale uses to the research and development and light manufacturing uses included in the zone. Prior to coming before the Commission, local public hearings were held, followed by

unanimous, respective votes of the Barnstable Planning Board and Town Council. The Commission approved the amendment during its meeting on June 11, 2020.



Commission Staff

Kristy Senatori, Executive Director

Abigail Bliss

Meghan Boudreau

Madden Bremer

Chelsea Bruck

Mario Carloni

Siobhan Cavacco

Jennifer Clinton

Kristen Clothier

Sarah Colvin

Gail Coyne

Patty Daley

Philip Detjens

Lisa Dillon

Danielle Donahue

Martha Hevenor

Jonathan Idman

Elizabeth Kellam

Mallory Kender

Sarah Korjeff

Tara Lewis

Lev Malakhoff

Maria McCauley

Heather McElroy

Colleen Medeiros

David Nolan

Timothy Pasakarnis

Erin Perry

Gary Prahm

Jessica Rempel

Anne Reynolds

Jeffrey Ribeiro

Chloe Schaefer

David Still

David Sullivan

Steven Tupper

Jordan Velozo

Michele White

Jessica Wielgus

2020 new hire 2020 departure

Cape Cod Commission Members

Harold Mitchell | Sandwich, *Chair*

Dr. Cheryl Andrews | Provincetown

Ron Bergstrom | County Commissioner

Joyce Brookshire | Eastham

Fred Chirigotis | Barnstable

Richard Elkin | Wellfleet

Jacqueline Etsten | Harwich

Douglas Fromm | Orleans (April - Present)

Kevin Grunwald | Truro

John D. Harris | Minority Rep.

Michael Maxim | Governor's Appointee

Charles McCaffrey | Falmouth

John H. McCormack, Jr. | Yarmouth

Stephen Mealy | Bourne

Richard Roy | Dennis

Leonard Short | Orleans (Jan - April)

Elizabeth Taylor | Brewster

Ernest Virgilio | Mashpee

David Weeden | Native American Rep.

Tom Wilson | Chatham



CAPE COD
COMMISSION

CAPE COD COMMISSION

3225 Main Street • P.O. Box 226 • Barnstable, MA 02630

Phone: 508-362-3828 • Fax: 508-362-3136

www.capecodcommission.org