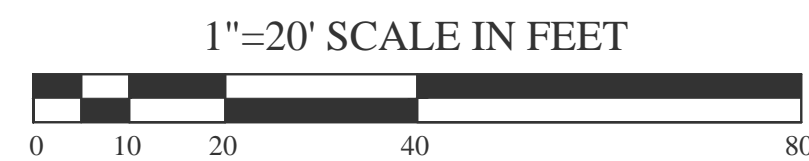
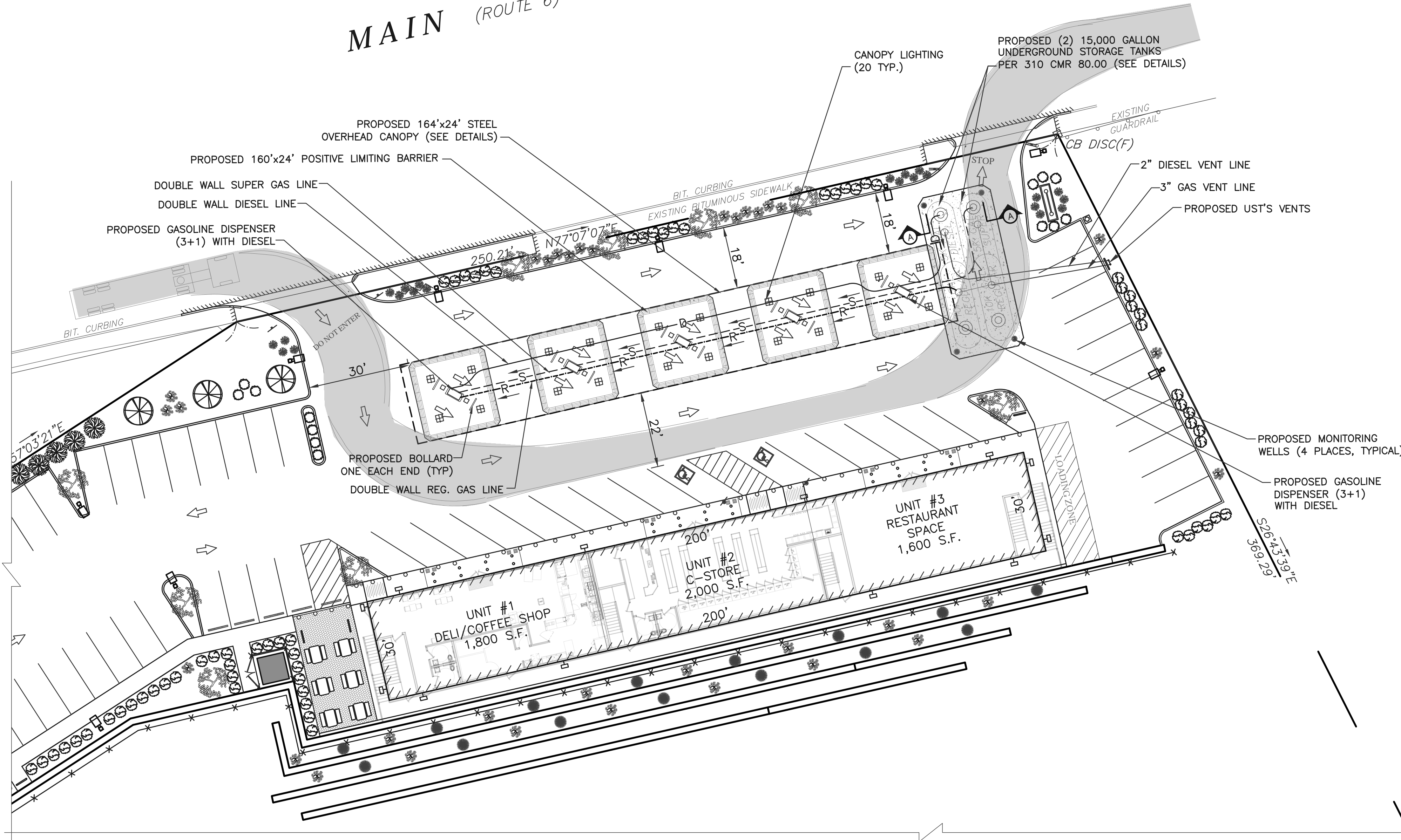


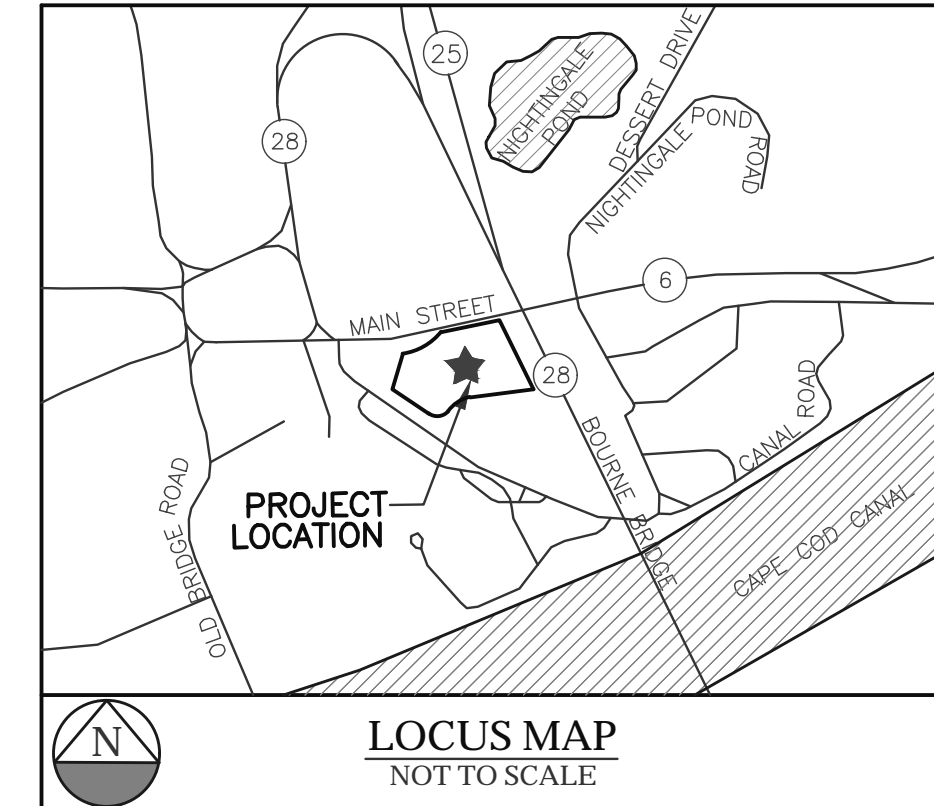
7C

MAIN (ROUTE 6) STREET



GAS LINE LEGEND	
SYMBOL	DESCRIPTION
—D—	PROP. DIESEL FUEL LINE
—R—	PROP. REGULAR GAS LINE
—S—	PROP. SUPER GAS LINE

NOTE:
SEE STATE APPROVED FIRE SUPPRESSION FOR POSITIVE LIMITING BARRIER DIMENSIONS AND FIRE SUPPRESSION SYSTEM



SITE DATA:
ADDRESS: 340 MAIN STREET, (BUZZARDS BAY) BOURNE, MA
ZONING DISTRICT: DOWNTOWN GATEWAY (DTG)
TOTAL AREA: 179,987 Sq.Ft. (4.13 Acre)
USE: GASOLINE FILLING STATION WITH RETAIL PLAZA

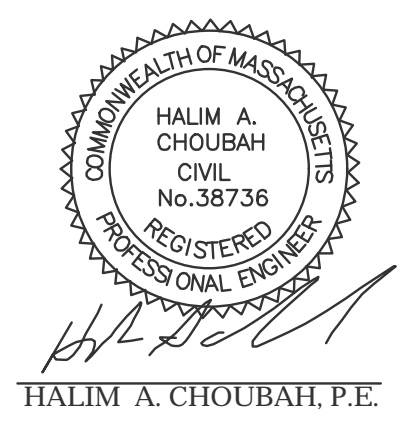
GENERAL NOTES TO CONTRACTOR

- IT SHALL BE THE CONTRACTORS SOLE RESPONSIBILITY TO OBTAIN ANY AND ALL PERMITS REQUIRED BY THE STATE OF MASSACHUSETTS AND THE TOWN OF BOURNE PRIOR TO COMMENCING ANY WORK.
- THE CONTRACTOR SHALL NOTIFY DIG SAFE TO DETERMINE EXACT LOCATION OF ALL UTILITY PRIOR TO ANY EXCAVATION (1-800-322-4844).
- THE CONTRACTOR SHALL BE RESPONSIBLE TO REVIEW THE CONSTRUCTION DRAWING AND TO NOTIFY THE ENGINEER WITH ANY DISCREPANCY BETWEEN THE DESIGN AND THE MANUFACTURES REQUIREMENTS AND ALL LOCAL, STATE AND FEDERAL CODES.
- PROPOSED UNDERGROUND TANKS AND PUMPS SHOWN ARE SCHEMATIC ONLY. TANKS INSTALLATION, LAYOUT AND PIPE SIZING SHALL BE IN ACCORDANCE WITH THE REQUIREMENTS OF THE MANUFACTURES. THE STATE FIRE MARSHALL AND MASSACHUSETTS BOARD OF FIRE PREVENTION REGULATIONS, 310 CMR 80.00, THE FIRE SAFETY CODE AND THE LOCAL FIRE DEPARTMENT. THIS DRAWING IS NOT INTENDED TO SHOW EVERY JOINT, FITTING AND CONSTRUCTION DETAIL. THE NEW TANKS & PIPING DISPENSERS SHALL BE EQUIPPED WITH SYSTEM IN ACCORDANCE WITH LOCAL, STATE AND FEDERAL REGULATIONS.
- THE CONTRACTOR SHALL BE RESPONSIBLE FOR THE SECURITY AND JOB SAFETY ON THE SITE. THE CONSTRUCTION SHALL BE PERFORMED IN ACCORDANCE WITH "OSHA" AND THE LOCAL MUNICIPALITY CONSTRUCTION STANDARDS.
- THE CONTRACTOR SHALL BE CERTIFIED BY THE MANUFACTURES TO INSTALL THE PROPOSED SYSTEM COMPONENTS IN ACCORDANCE WITH THE MANUFACTURES REQUIREMENTS.
- PROPOSED UNDERGROUND STORAGE TANKS AND PIPING SHALL BE TESTED PER THE REQUIREMENTS OF THE MANUFACTURES, THE STATE FIRE MARSHALL AND MASSACHUSETTS BOARD OF FIRE PREVENTION REGULATIONS, 310 CMR 80.00 PRIOR TO OPERATION. COPIES OF THE RESULTS SHALL BE SUBMITTED TO THE LOCAL FIRE DEPARTMENT AND OWNER.
- THE CONTRACTOR SHALL CONSTRUCT A 4000 PSI, AIR ENTRAINED, REINFORCED CONCRETE PAD IN THE AREA SURROUNDING THE FUEL DISPENSING ISLAND AND OVER THE UNDERGROUND STORAGE TANKS. THE CONCRETE PAD SHALL BE SIX INCHES THICK OVER SIX INCHES COMPACTED GRAVEL.
- THE CONTRACTOR SHALL BE RESPONSIBLE TO DISPOSE OF ANY UNSUITABLE OR SURPLUS MATERIALS PROPERLY OFF SITE IN ACCORDANCE WITH LOCAL AND STATE ENVIRONMENTAL CODES.
- THE CONTRACTOR SHALL INSTALL A MONITORING SYSTEM TO DETECT ANY LEAK IN THE PRESSURIZED PIPING SYSTEM AND SHALL TEST TO NO LESS THAN 60 PSI THE PRODUCT LINES AND PRESSURE TEST THE FUEL DISPENSERS/SUMPS AND THE UNDERGROUND STORAGE TANKS, SUMPS, OUTER AND INNER WALLS PRIOR TO RESTART OF OPERATION.
- THE CONTRACTOR SHALL NOT TERMINATE THE "VENT PIPE" FROM THE UNDERGROUND STORAGE TANKS AT THE FILLING LOCATION OF THE TANK OR FIVE FEET FROM THE OPENING OF DOORS AND WINDOWS. THE VENT PIPE SHALL BE FITTED WITH AN APPROVED WEATHER HOOD SCREEN.
- THERE WILL BE TWO 15,000 GALLON DOUBLE WALL TANKS. ONE SPLIT COMPARTMENT TANK WILL CONTAIN 10,000 GALLONS OF REGULAR UNLEADED AND 5,000 GALLONS OF DIESEL FUEL. THE OTHER SPLIT COMPARTMENT TANK WILL CONTAIN 10,000 GALLONS OF REGULAR UNLEADED AND 5,000 GALLONS OF SUPER UNLEADED GASOLINE.
- ALL TANKS SHALL BE EQUIPPED WITH CONTAINMENT MANHOLES, OVERFILL PROTECTION AND COAXIAL FILL DROP TUBES FOR VAPOR CONTROL. ALL PIPING SHALL DOUBLE WALL FLEXIBLE TOTAL CONTAINMENT.
- THE ISLAND BOLLARD SHALL BE A MINIMUM 4" DIAMETER, SCHEDULE 40 STEEL PIPE U-SHAPED FILLED WITH CONCRETE. THE PIPE SHALL BE SET IN 4000 PSI CONCRETE FOOTING, 24" IN DIAMETER AND 3'-6" DEEP.
- THE CONTRACTOR SHALL CONFINE HIS OPERATIONS AND ACTIVITIES WITHIN THE PROPERTIES RIGHT OF WAY. NO PROPOSED WORK IS ANTICIPATED ON PUBLIC STREETS.
- THE CONTRACTOR SHALL MAINTAIN ALL EXCAVATION IN DRY CONDITIONS.
- ALL EXISTING UTILITIES WATER, GAS, DRAINS, & ELECTRIC SHALL BE PROPERLY PROTECTED AND MAINTAINED DURING THE CONSTRUCTION PERIOD.
- THE CONTRACTOR SHALL SHORE, BRACE, SHEET PILE OR OTHERWISE SUPPORT THE EXISTING BUILDING, UTILITIES AND STREET NEXT TO THE PROPOSED UNDERGROUND STORAGE TANKS DURING EXCAVATION.
- THE CONTRACTOR SHALL STRAP THE UNDERGROUND STORAGE TANKS TO THE CONCRETE SLAB PER THE MANUFACTURES SPEC. CONCRETE SLAB SHALL BE SIZED BY THE TANK MANUFACTURES' TO RESIST UPLIFT WATER PRESSURE AND TO PREVENT TANKS FROM MOVEMENT.
- THE APPLICANT SHALL REVIEW THIS PLAN WITH THE LOCAL OFFICIALS TO CONFIRM ITS COMPLIANCE WITH LOCAL CODES AND ZONING BY-LAWS AND TO OBTAIN ANY PERMITS OR VARIANCES FOR THE PROPOSED WORK SHOWN ON THE PLAN.
- THE CONTRACTOR SHALL RELOCATE UTILITIES IN CONFLICT WITH THE TANKS LAYOUT IN ACCORDANCE WITH APPLICABLE CODES AND REQUIREMENTS OF UTILITY COMPANIES.
- LOCATION & DEPTH OF EXISTING UTILITIES SHOWN ARE BASED ON THE BEST AVAILABLE INFORMATION. LOCATIONS ARE NOT WARRANTED TO BE EXACT, NOR IS IT WARRANTED THAT ALL EXISTING UTILITIES ARE SHOWN.

Choubah Engineering Group, p.c.
CEG
Consulting Professional Engineers
112 STATE ROAD (ROUTE 6),
No. DARTMOUTH, MA 02747
TEL: (508) 858-5040 FAX: (508) 858-5041
www.choubahgroup.com

Project:
PROPOSED FILLING STATION AND MIXED-USE BUILDING
340 MAIN STREET,
BOURNE, MA 02532

Prepared For:
340 MAIN STREET, LLC
561 THOMAS B. LANDERS RD
FALMOUTH, MA 02536



Issue Date: 09/25/2019

Revisions		
No.	Date	Description
1	01/28/2020	Peer Review Comments
2	02/13/2020	Peer Review Comments

Project Number: 15-427
Scale: AS SHOWN
Designed By: CMS
Drawn By: CMS | Checked By: HC

Sheet Title:
FUEL PIPING LAYOUT & FUEL TRUCK ACCESS PLAN

Sheet Number. 10 OF 22