



Schiavi, Anthony

From: Bert Jackson <bert@capecodchamber.org>
Sent: Monday, March 30, 2020 11:22 AM
To: Schiavi, Anthony
Cc: Kathy Zagzebski
Subject: Data for Expedition Blue installation

Hi Tony,

Hope you are doing well. I am sure you are swamped with the COVID-19 situation.

We are keeping our project moving as best we can given the circumstances. Coastal Engineering, who is helping with permit evaluations, is ready to proceed. They have requested a specific address and map/parcel number for the installation location. I know we discussed the corner of the NMLC lot near the canal, as shown on the attached map.

Were you also interested in placing activator posts elsewhere? If you, I will need addresses and map/parcel numbers for those, as well.

Thank you! Be well...

--

Bert Jackson
Director of Community Engagement
Cape Cod Blue Economy Foundation, Inc.



5 Patti Page Way
Centerville, MA 02632
Direct: (508) 237-5640
bert@capecodchamber.org

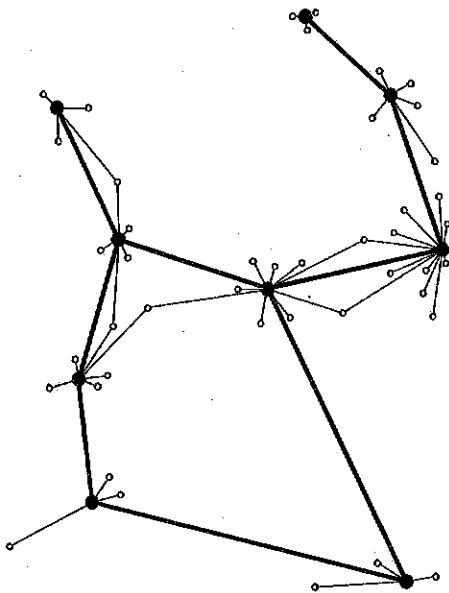
www.bluecapecod.org

[Facebook](#)
[@capeBlueEconomy](#)
[LinkedIn](#)

Expedition: Blue!

Design Overview

Expedition Blue **Approach**



Definition

Expedition Blue is a network of sites in the Cape Cod region showcasing how water anchors our landscape, powers our economy, and inspires our future.

An integrated system of architecture, landscape, exhibits and identity that demonstrates the blue economy in action and is durable, ecological, efficient and flexible.

An even **more adaptable kit of parts that can be highly responsive to town & partner input but still be rigorously standardized**

An anchor for **regional identity and for new **experiences in the landscape****

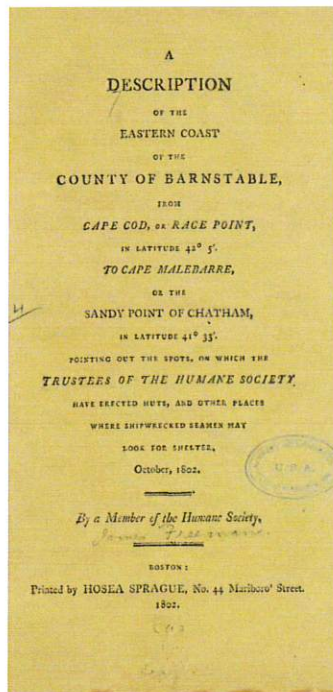
A new **front porch and a new **way into** the blue economy!**

Historical Inspiration: Humane Society Lifesaving Huts

The 1802 "Description of the Eastern Coast of the County of Barnstable from Cape Cod, or Race Point in Latitude 42..." is not as arcane as its title may appear. In this publication, James Freeman, a member of the Humane Society of Massachusetts provided a surprisingly relevant template for Expedition: Blue. His account of the small huts, erected, funded and maintained by the Humane Society tells of a project devoted to the aid of shipwrecked sailors off the coast of Cape Cod for the preservation of life and economic gain.

With great sensitivity to the landscape, the waterborne economy and to a purposeful resourcefulness and pragmatism, he tells where bedraggled mariners can find shelter after a shipwreck until further help arrives and, in some ways, sets forward a program for how to understand the region in terms of building and living in relationship to the environment, albeit in extreme circumstances.

The typical hut is a standardized kit of parts on an 8'x8'x7' module. The striking thing for the present effort is that he describes a network of semi-temporary, lightly furnished, community-maintained, environmentally-sensitive shacks which are aids to life and economic development and identified by a coordinate system no less! While this is for shipwrecked sailors, ours will be for a different kind of castaway from the modern day landside looking to find a balance of life



Network of Shelters

At the head of Stout's Creek the Trustees have built a second hut. Stout's Creek is a small branch of East Harbour in Truro. Many years ago there was a body of salt marsh on it.

Community-Maintained

The Rev. Mr. Damon of Truro has also promised to visit the hut at Stout's Creek twice or thrice in a year; and the Rev. Mr. Whitman of Wellfleet, distinguished through the county

Strategically Located

The hut now erected stands on a place covered with beach grass. To prevent any accident from happening to it, or to the other hut near Peaked Hill, the Trustees have secured the

Coordinate System

third hut, on Nasset beach. Nasset beach begins in latitude 41° 51' and extends south to latitude 41° 41'. It is divided into two parts by a beach, which the ocean has made through

Aids to Life and

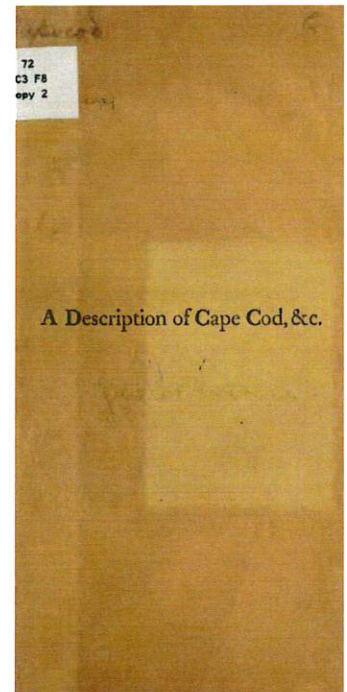
Economy Seamen, cast away on this part of the coast, will find a shelter here; and in north-east storms, should they strike to the leeward of it, and be unable to turn their faces to

Modular

The six huts, the situation of which has thus been pointed out, are all of one size and shape. Each hut stands on piles, is eight feet long, eight feet wide, and seven feet high; a sliding door is on the south, a sliding shutter on the west, and a pole, rising fifteen feet above the top of the building, on the east. Within, it is supplied either with straw or hay; and is farther accommodated with a bench.

Super-Resourceful

Two miles below the sixth hut is a fishing house, built of thatch, in the form of a wigwam. It stands on the west side of the beach, a quarter of a mile from the ocean. Annually in September it is removed; and generally remains in tolerable preservation during the winter.



Some Possible Ancestors

Economical, Resourceful, Natural, Flexible Structures are par of the Cape's building traditions

Wetu



pre-1800's

Lifesaving Huts



early 1800's

Artist Shacks



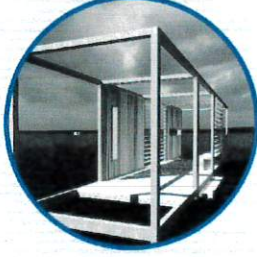
early 1900's

Cape Modern



mid 1900's

Expedition: Blue!



Present

Acknowledgement to Peter McMahon & Christine Cipriani

Concept Design: Architecture References

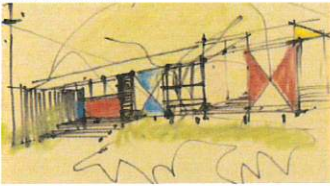
More Porch, less Kiosk

While a kiosk may tell about a place, a porch is a place. The porch welcomes, and also invites further experiences



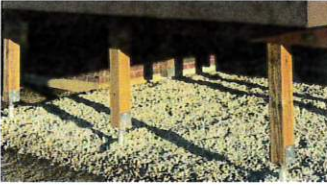
More Modular & Adaptable

Taking cues from various building traditions of the region, we see that durable, flexible, environmentally- ly keen buildings are most able to show the ethos of the region and the values of the blue economy.



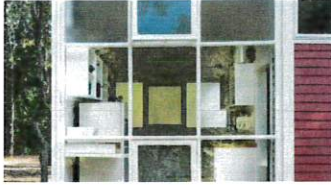
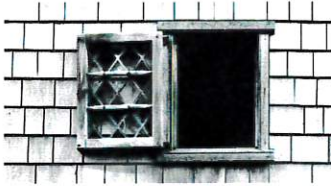
Material = Identity

The use of simple, but purposeful new and old materials is key to durability and communicating the ethos of Expedition Blue. Possible materials include Thermally modified wood, polycarbonate, recycled ocean plastic, reused materials, etc. foundations

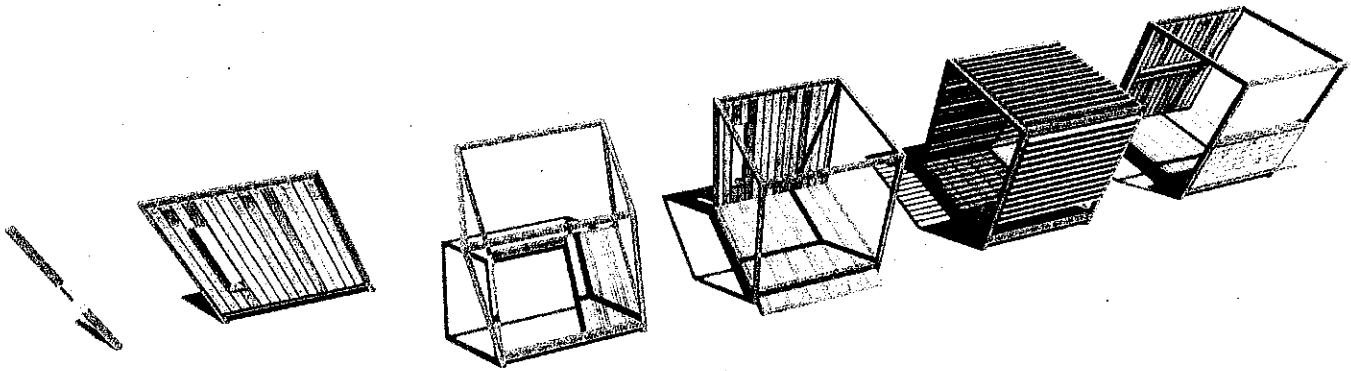


More Ways to See & Experience

Window to Explorations. Seeing prompts doing.



Module Overview: A range of options



XXS extra-extrasmall

- 8' tall 4x4 wood post
- "viewport"
- Interpretive text on metal collar
- 3' of pole is below grade
- direct-buried with no foundation required

XS extra-small

- Interpretive panel with room for signage, maps, etc...
- tall window

S4 small, option 4

- open frame
- partial deck for sitting
- large frames allow for interpreting objects above, below and horizontally

S3 small, option 3

- interpretive panel with room for signage, maps, etc...
- tall window
- large frames allow for interpreting objects above and horizontally
- 6" step to provide "front stoop" to the porch

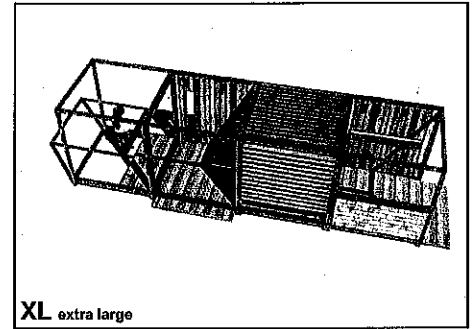
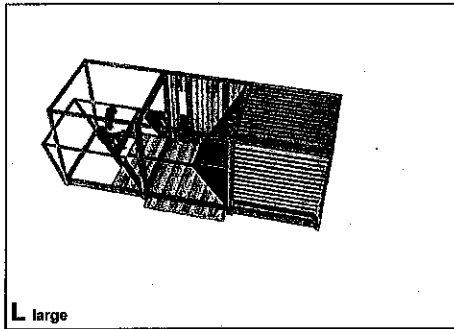
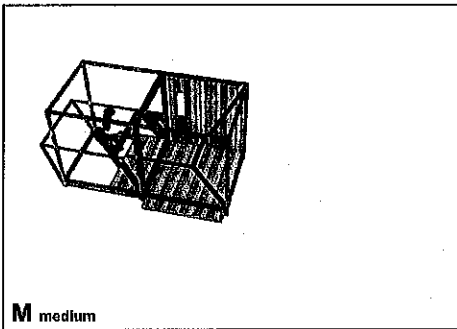
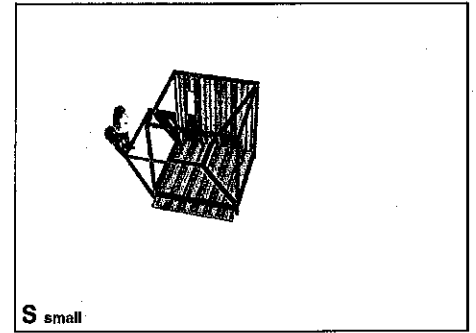
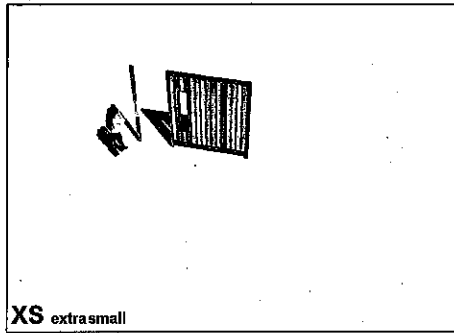
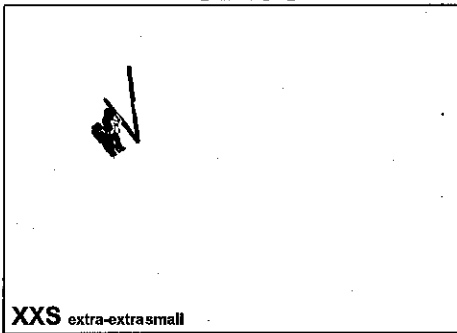
S2 small, option 2

- slatted roof and walls provide shade and privacy
- slats form a series of "strata" or "horizons" for viewing different layers of the surroundings.
- 8' long bench
- Interpretive text as captions on wood structures

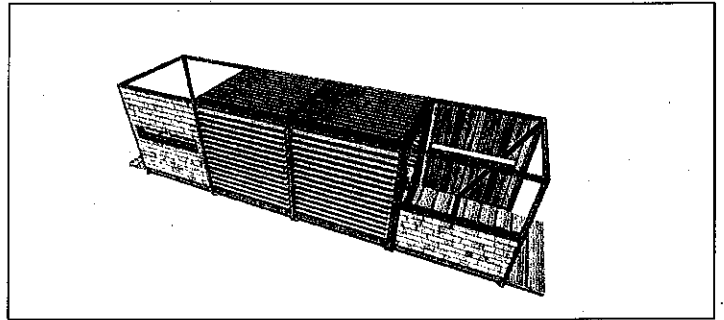
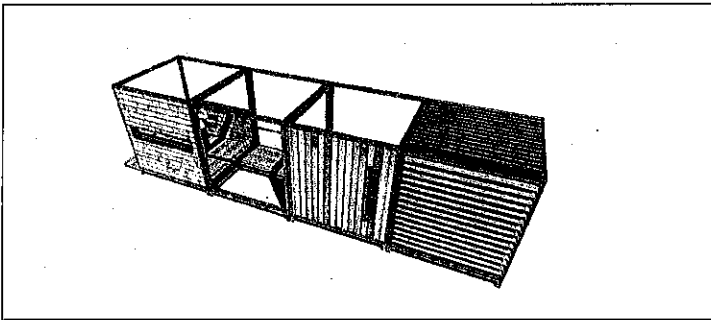
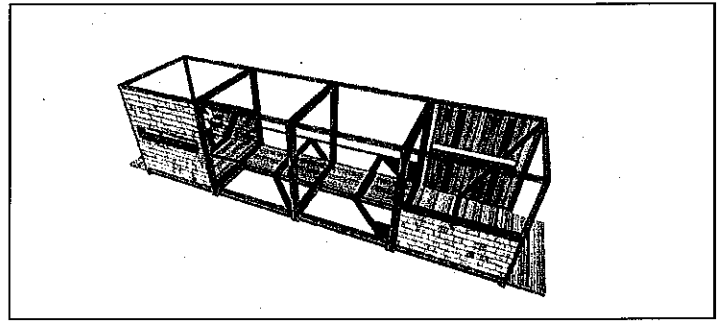
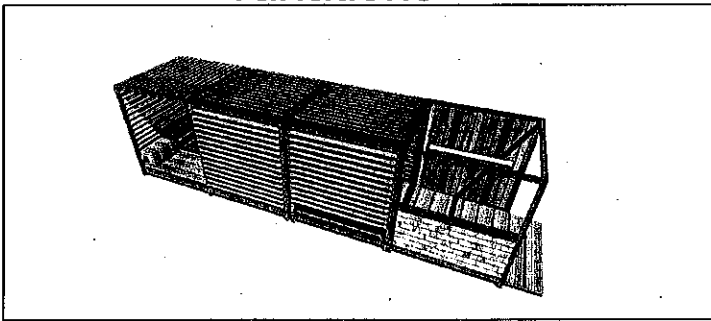
S1 small, option 1

- low wall and high wall provide space for interpretation and graphics and artifacts
- 1:20 sloped platform to allow ADA access
- long, low window for landscape

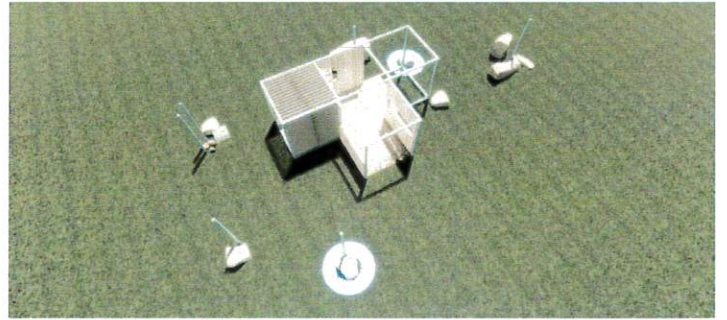
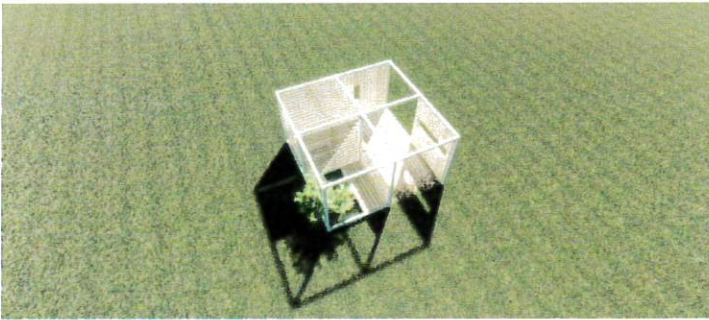
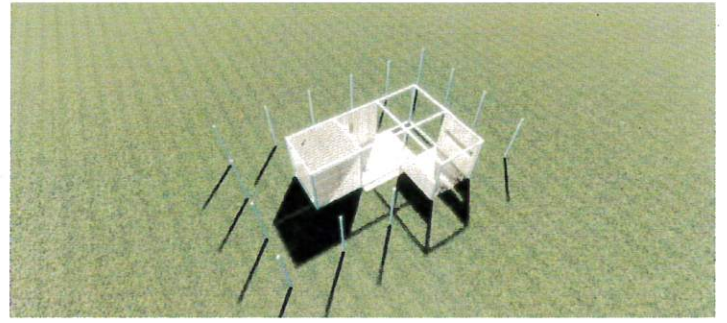
Module Size Options: A range of sizes



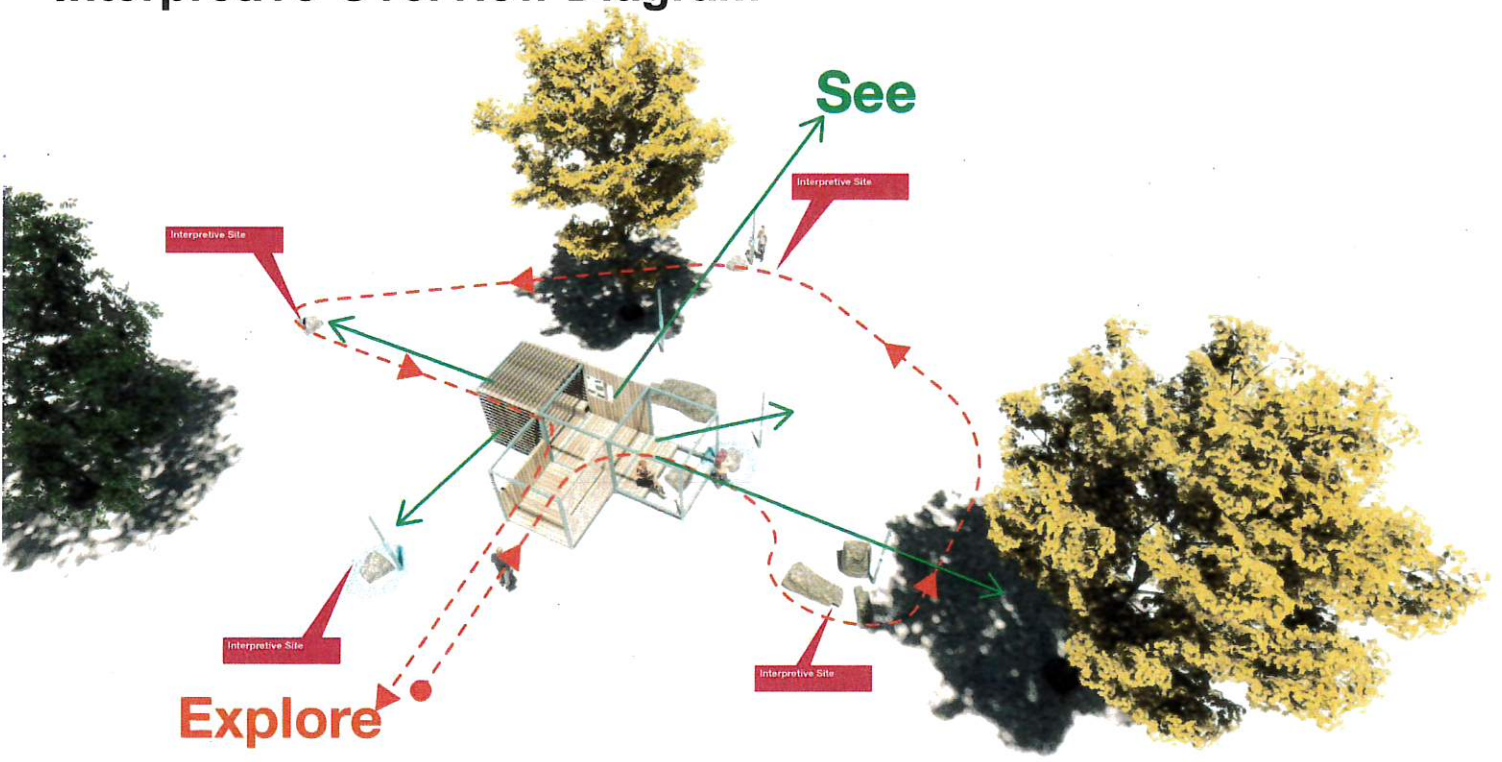
Potential Combinations linear variations



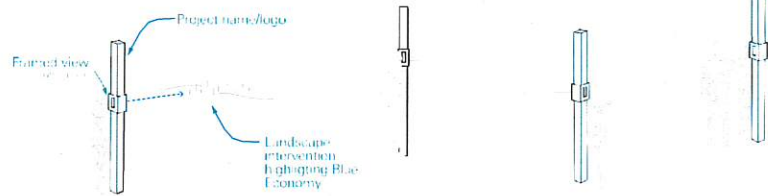
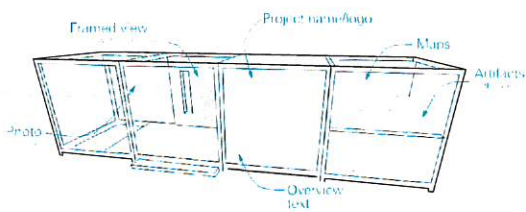
Potential Combinations field variations



Interpretive Overview Diagram



Expedition Blue **Approach**



Installations

Windows and Doors to the Blue Economy

These installations serve as “hubs” for Expedition Blue and provide an overview of the Blue Economy and the network of installations. They encourage visitors to find the “markers.”

Communication tools

- Name/logo
- Overview text
- Maps: overview and local
- Stories:
 - photos/illustrations
 - text (captions, quotes, poems and/or brief stories)
 - artifacts
 - framed views (of blue economy elements)

Interpretive Markers

These signs mark examples of the Blue Economy in situ. Frequently paired with landscape interventions.

Communication tools

- Name/logo
- Story:
 - framed views (of blue economy elements)
 - text (captions, quotes, poems and/or brief stories)

Walkthrough



Walkthrough



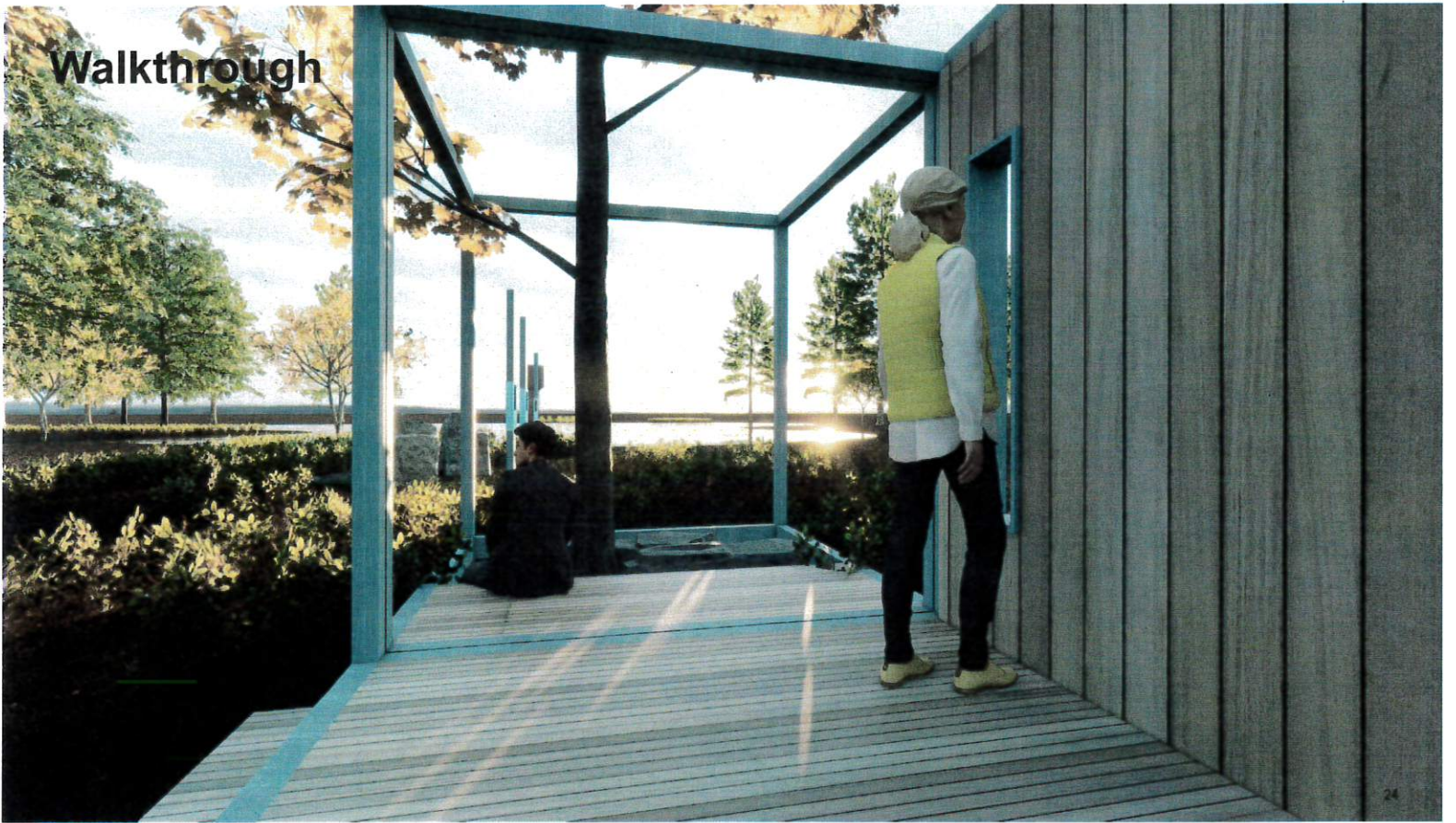
Walkthrough



Walkthrough



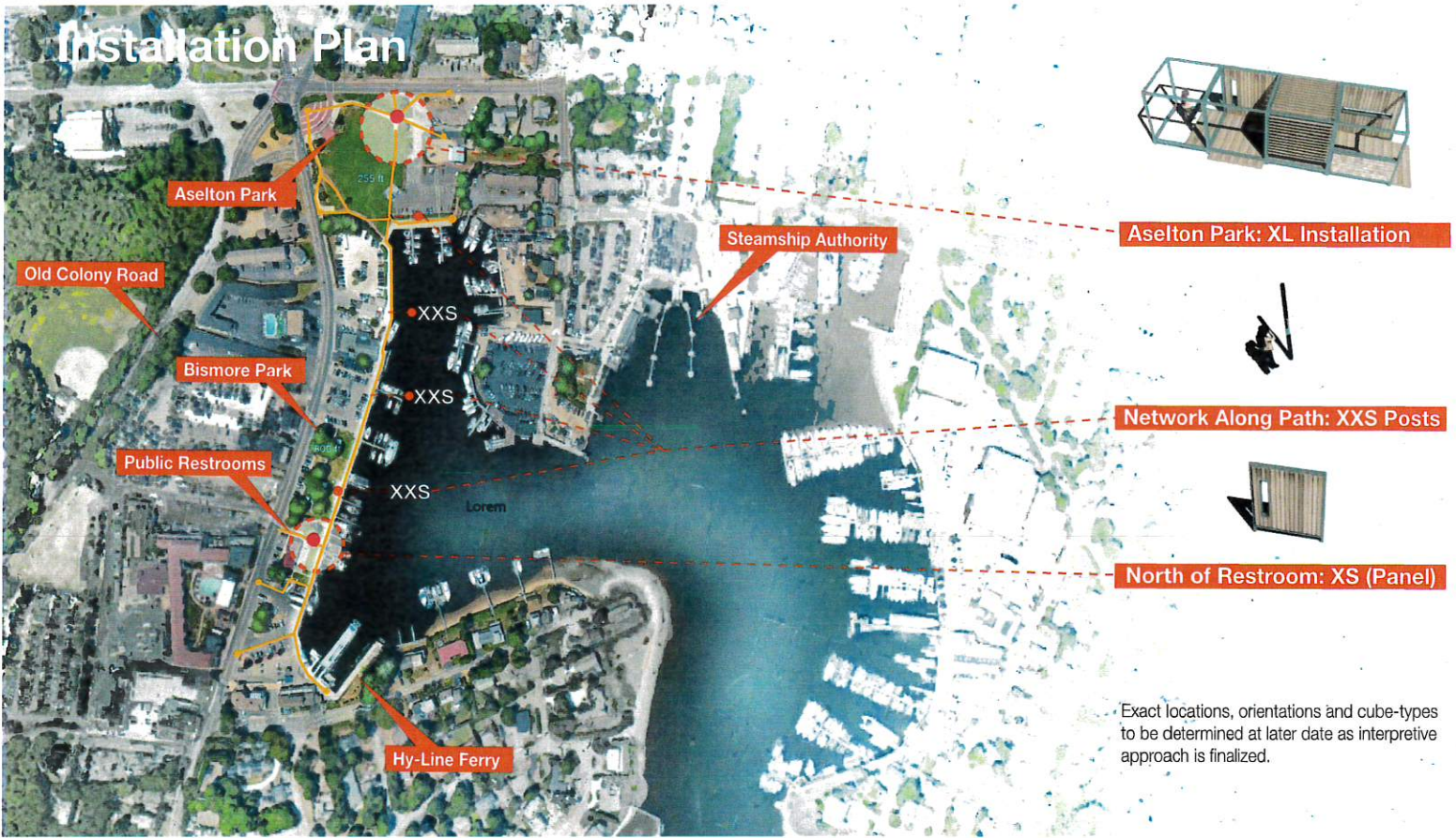
Walkthrough



Walkthrough



Installation Plan



Exact locations, orientations and cube-types to be determined at later date as interpretive approach is finalized.

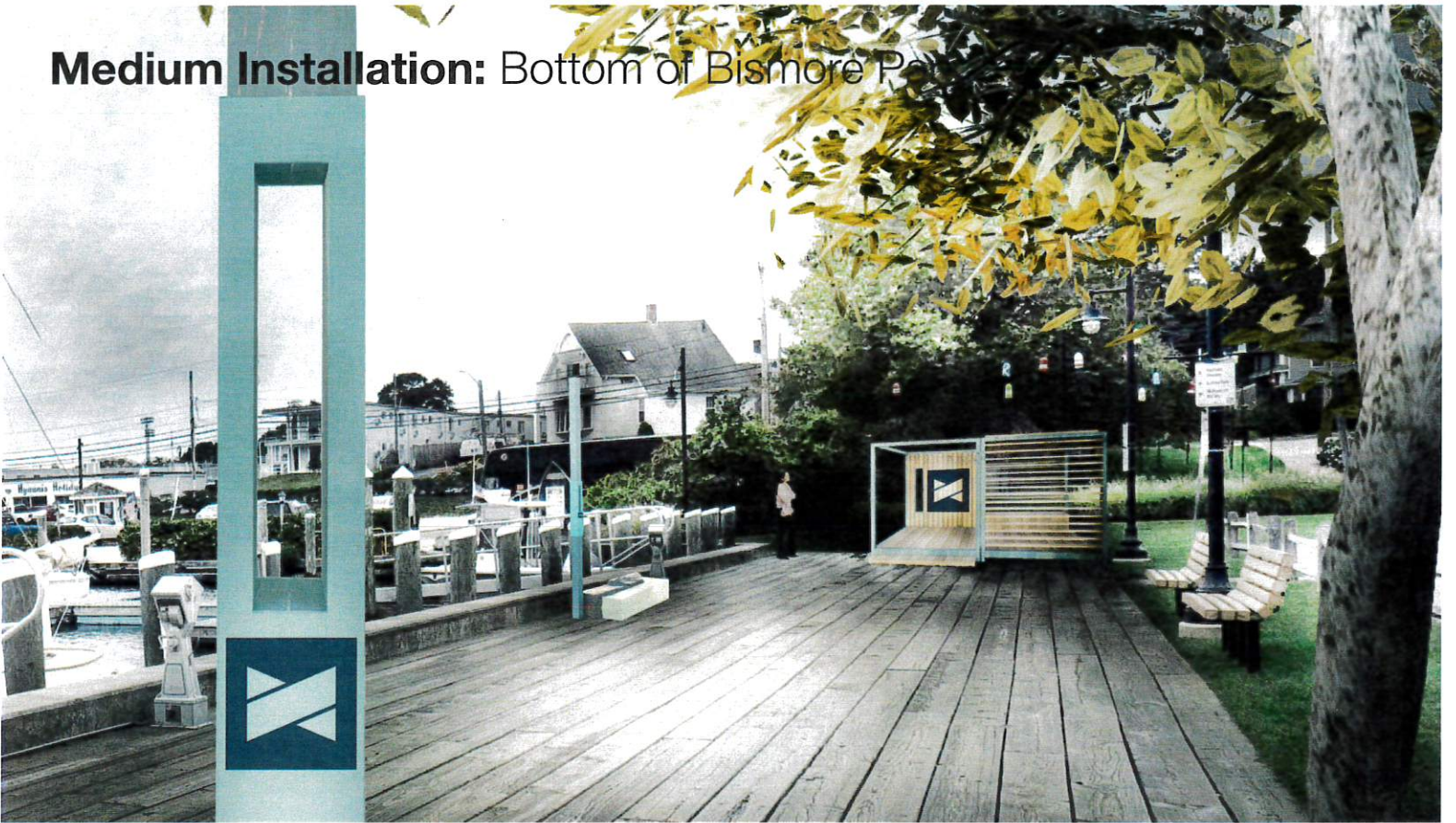
Extra Small Installation: North of Public Restrooms



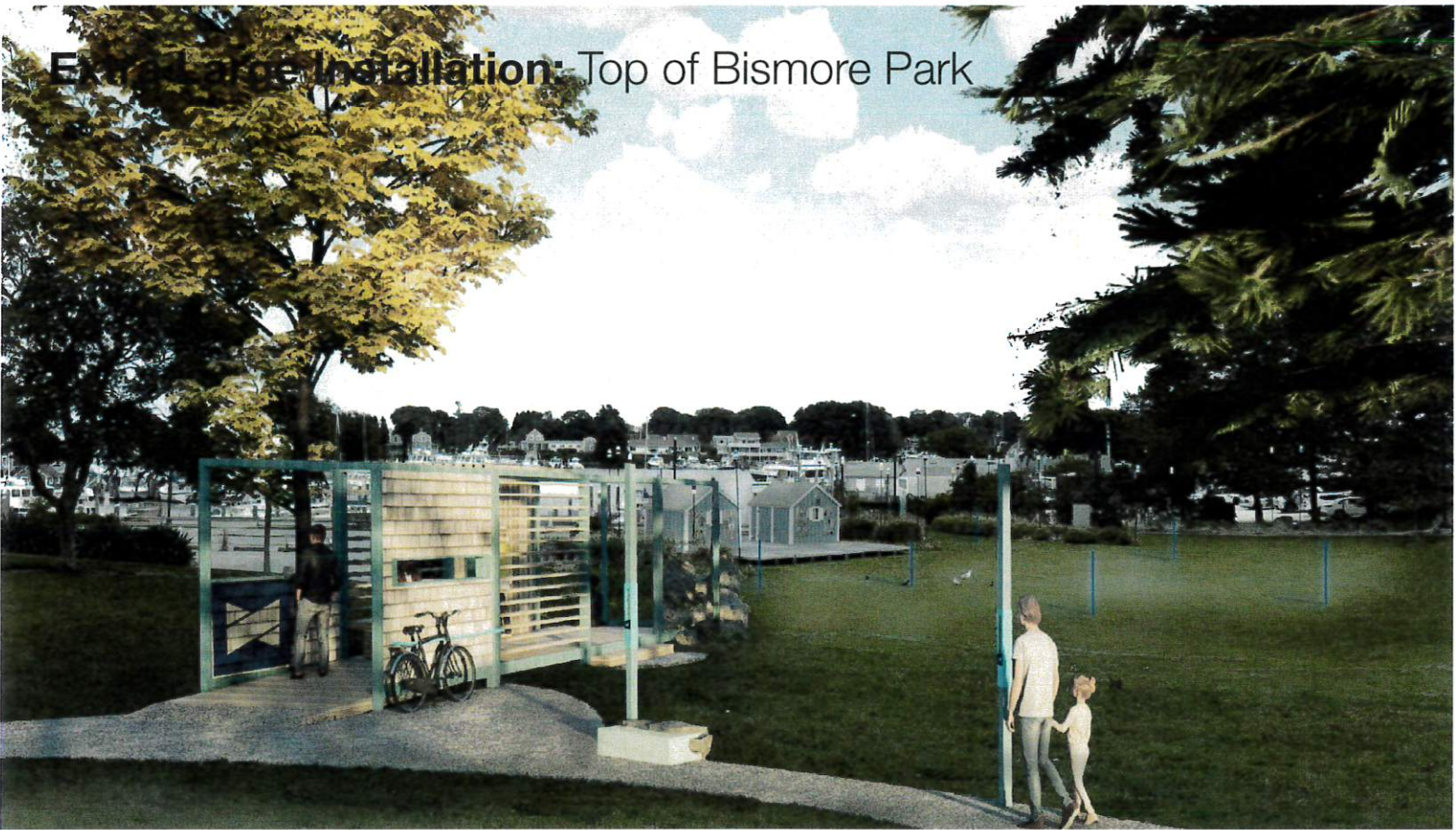
Small Installation: South of Public Restrooms



Medium Installation: Bottom of Bismore Park



Example Large Installation: Top of Bismore Park



Expedition Blue **Approach**

“The Cape Cod Blue Economy is on the rise.
...though this economy is already hard at work,
identifying what it is has never happened.
As a result, the latent power of the Blue Economy
is large and will only be successful at linking a
healthy environment with a healthy economy by
**making it known explicitly to the general
public, partner organizations and current
and future contributors.**”

Excerpt from the Cape Cod Blue Economy Project Implementation Plan, 01-22-19

Expedition Blue **Approach**

Goal

To showcase and engage the public with the local Blue Economy to build awareness, understanding and pride.

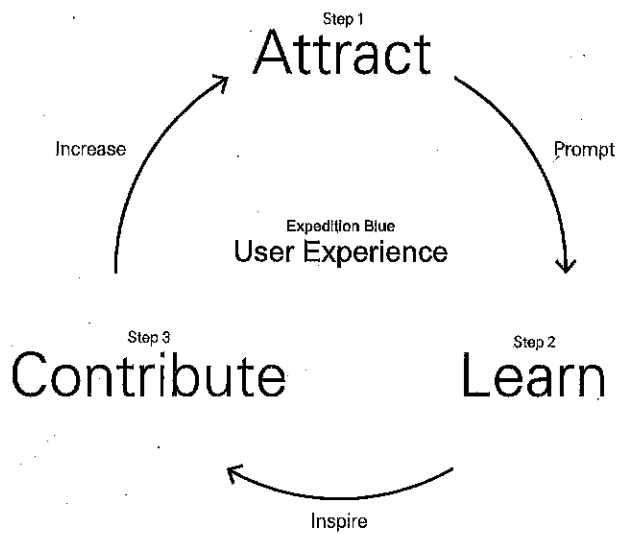
Problem

The public doesn't know about the Blue Economy, or what it is.

Target Audience

The general public, including educators, outside visitors and locals to the Cape Cod region.

Expedition Blue **Experience**

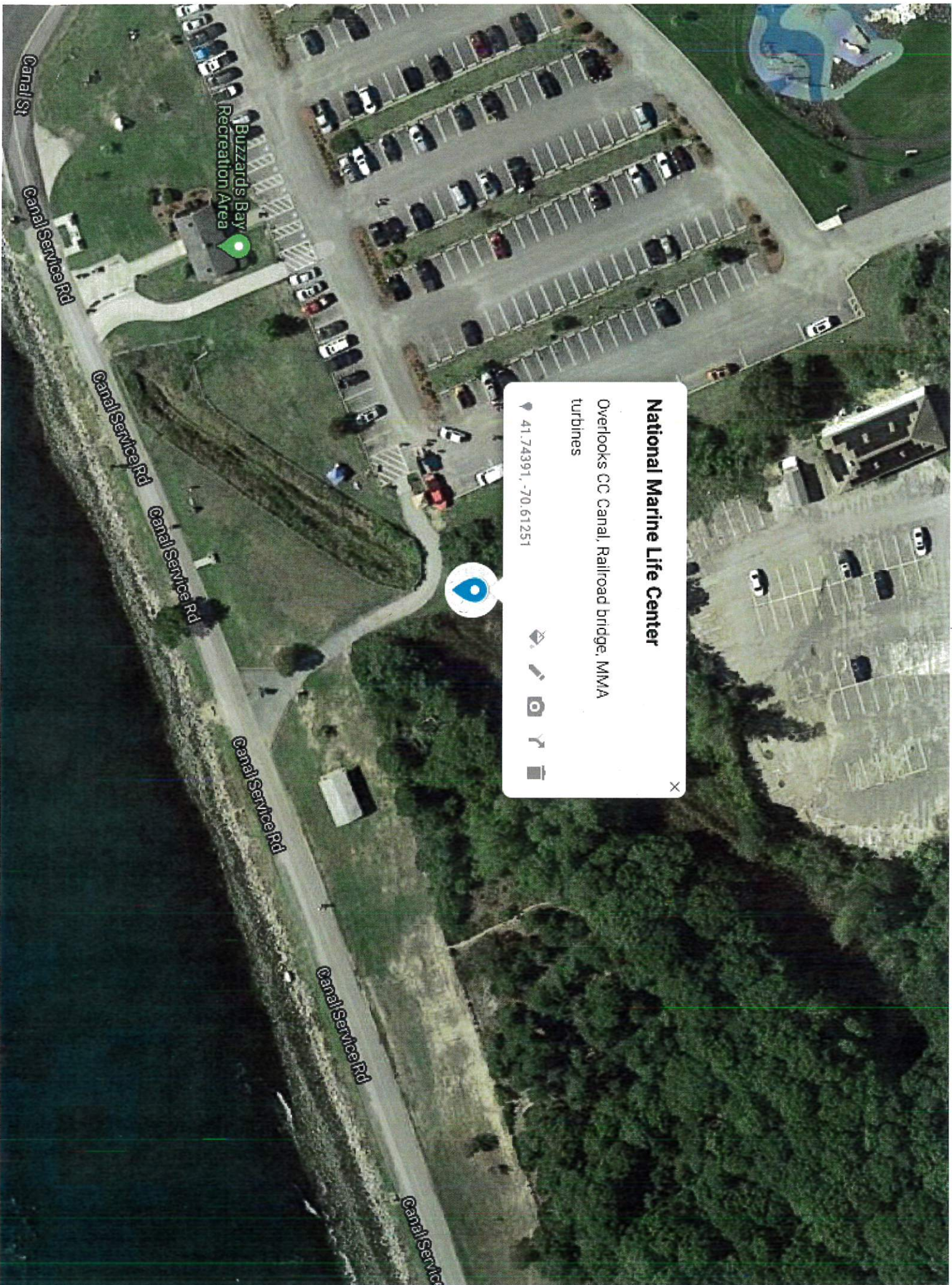


Attract
Build awareness and interest

Learn
Invite people to engage

Contribute
Enable action and pride

Thank You!



Buzzards Bay
Recreation Area

Canal St

Canal Service Rd

Canal Service Rd

Canal Service Rd

Canal Service Rd

Canal Service Rd

Canal Service Rd

National Marine Life Center

Overlooks CC Canal, Railroad bridge, MMA
turbines

41.74391, -70.61251



X