

NORTH

7 BUILDINGS WHERE 5 WERE  
ORIGINALLY PROPOSED

BUILDINGS GENERALLY  
APPEAR TO BE LARGER  
(TYP.)

MORE GRADE ALONG REAR  
OF BUILDINGS IN ORIGINAL  
DESIGN

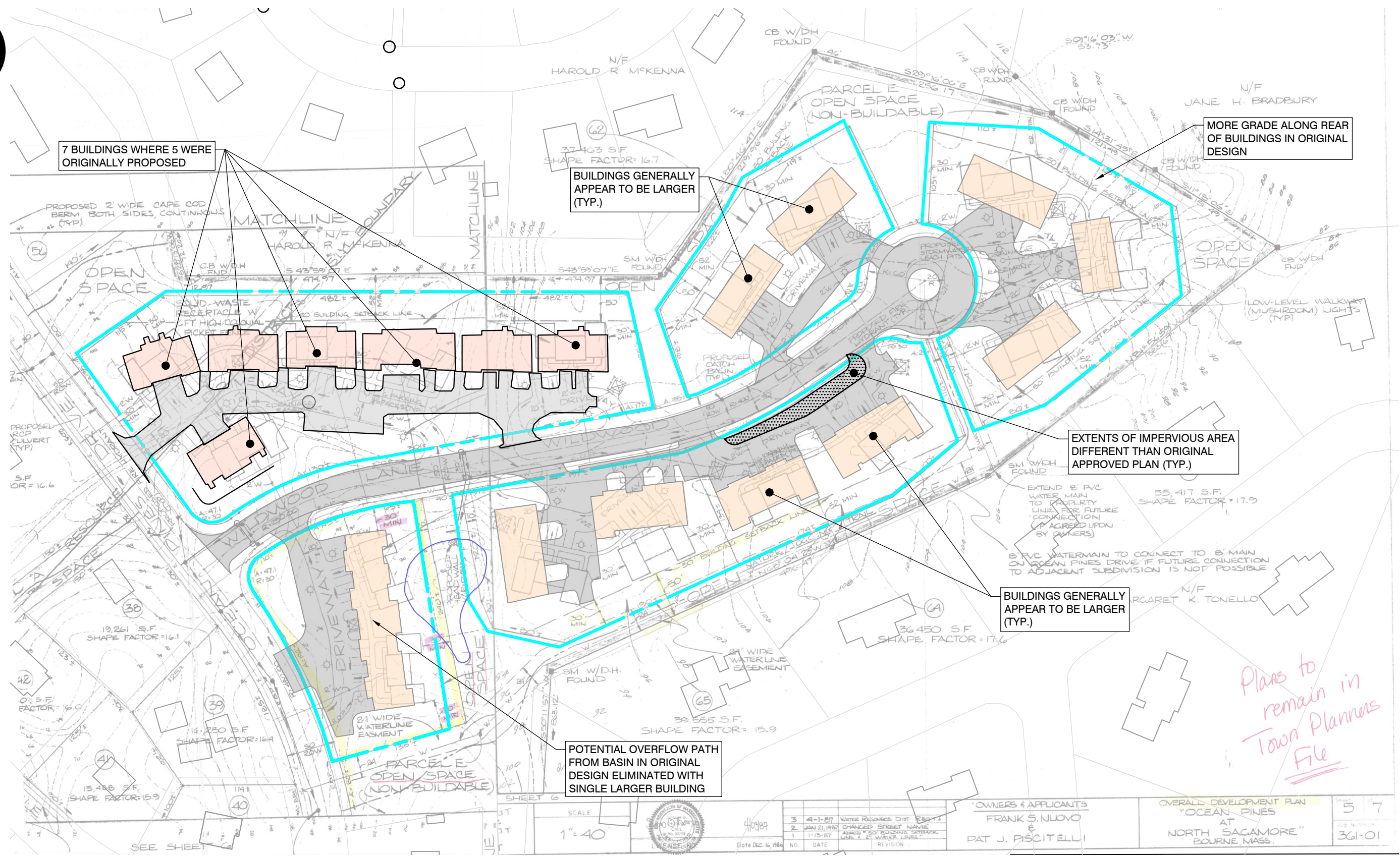
EXTENTS OF IMPERVIOUS AREA  
DIFFERENT THAN ORIGINAL  
APPROVED PLAN (TYP.)

BUILDINGS GENERALLY  
APPEAR TO BE LARGER  
(TYP.)

POTENTIAL OVERFLOW PATH  
FROM BASIN IN ORIGINAL  
DESIGN ELIMINATED WITH  
SINGLE LARGER BUILDING

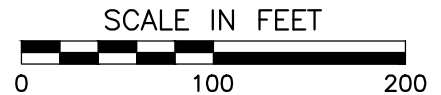
*Plans to  
remain in  
Town Planners  
File*

\\cecinc.com\global\Projects\330-000\335-785\CADD\DWG\335785-CV01-SF01-Overlay.dwg(SPO3) LS:(10/20/2023 4:09 PM



**REFERENCE**

1. TOPOGRAPHIC INFORMATION BASED INFORMATION PROVIDED VIA MASSGIS.
2. PROPOSED DEVELOPMENT DEPICTED BASED ON EXHIBIT INCLUDED IN 2022 DRAINAGE ANALYSIS PREPARED BY EXISTING GRADE.
3. PLANS SHOWN IN BACKGROUND REFERENCED AS ORIGINAL DESIGN ASSOCIATED WITH 1987 SPECIAL PERMIT WERE PROVIDED BY TOWN OF BOURNE AND ARE AN EXCERPT FROM A PLAN SET ENTITLED "OVERALL DEVELOPMENT PLAN - OCEAN PINES" DATED APRIL 1, 1987.



SCALE 1"=40'	OWNERS & APPLICANTS FRANK S. NUOVO & PAT J. DISCITELLI	OVERALL DEVELOPMENT PLAN "OCEAN PINES" AT NORTH SACAMORE" BOURNE, MASS.	SHEET 5 7 JOB NUMBER 361-01
-----------------	---	---	---

**CEC**  
Civil & Environmental Consultants, Inc.  
31 Bellows Road · Raynham, MA 02767  
Ph: 774.501.2176 · 866.312.2024 · Fax: 774.501.2669  
www.cecinc.com

OCEAN PINES CONDOMINIUM  
BOURNE, MA

PLAN OVERLAY EXHIBIT

DRAWN BY: DATE:	KPS OCTOBER 2023	CHECKED BY: DWG SCALE:	KPS 1"=100'	APPROVED BY: PROJECT NO:	KPS 335-785	FIGURE NO.:	<b>SP03</b>
--------------------	---------------------	---------------------------	----------------	-----------------------------	----------------	-------------	-------------