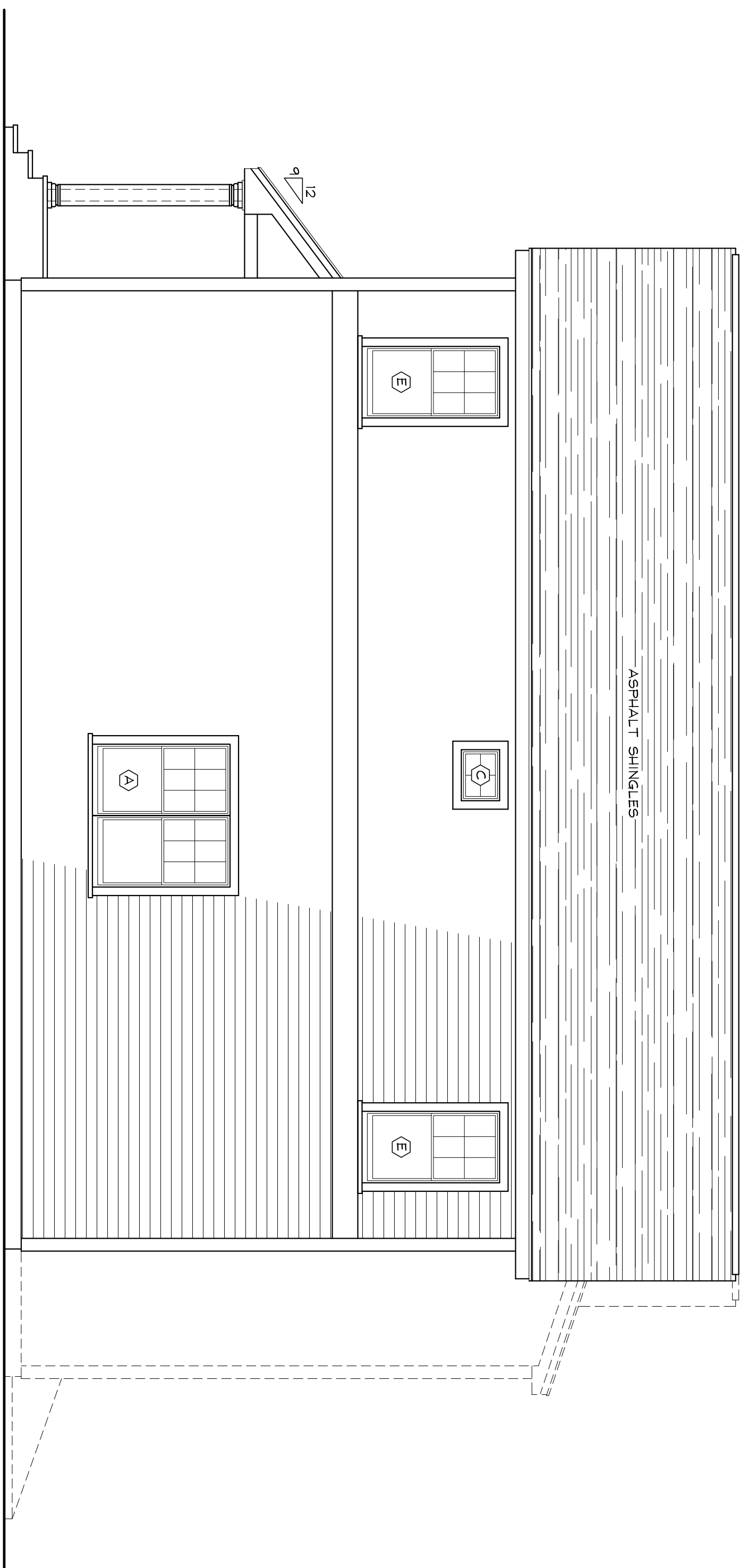


FRONT ELEVATION  
SCALE: 1/4" = 1'-0"



RIGHT SIDE ELEVATION  
SCALE: 1/4" = 1'-0"

TITLE:  
**ELEVATIONS**

**BRADFORD HART CAD DESIGNS**  
RESIDENTIAL CAD DESIGN SERVICES  
14 FLINT LOCKE DRIVE PLYMOUTH, MA.  
PHONE NO. # (508) 246-8712

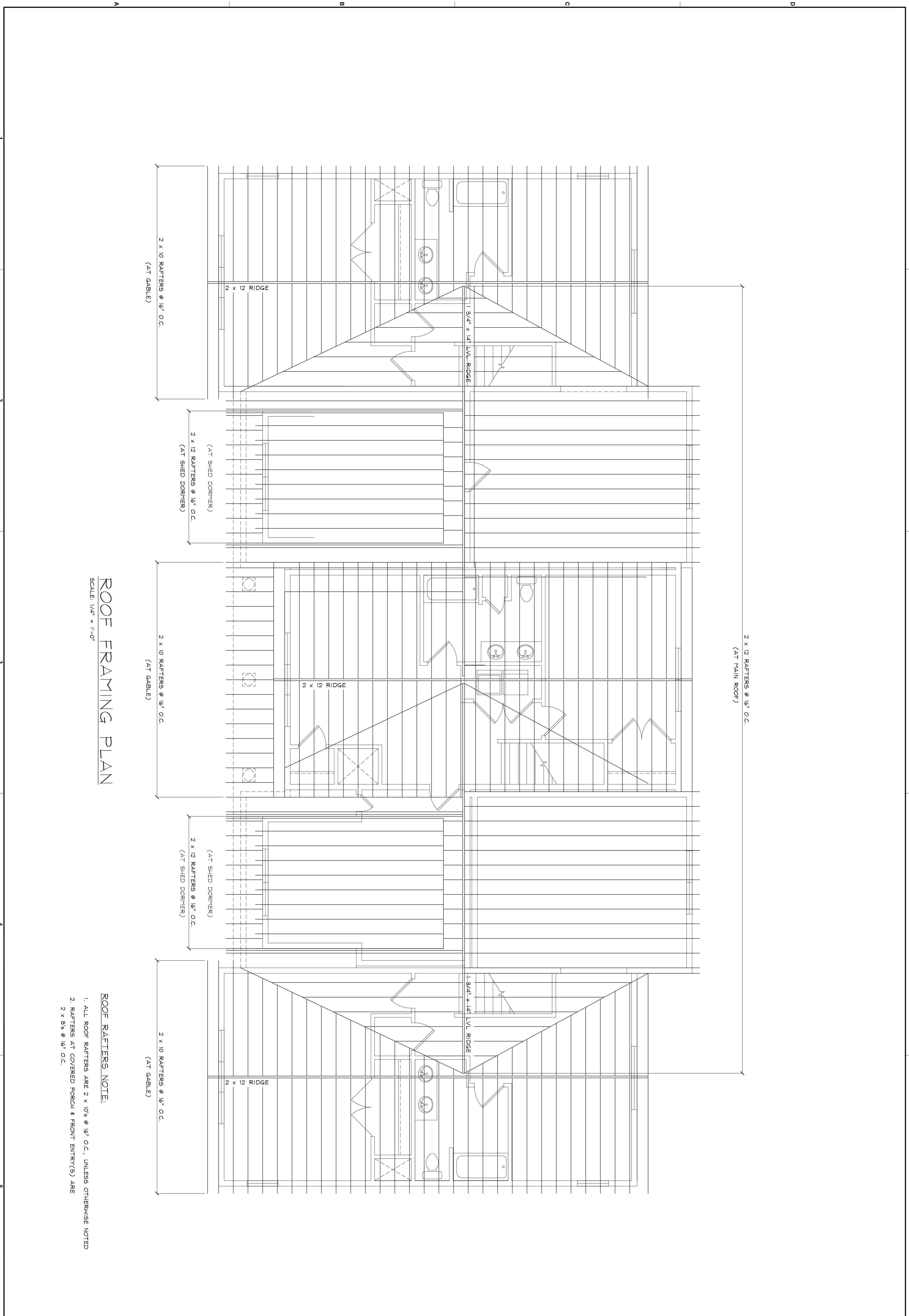
PROJECT:  
**HEBB BUILDERS, INC**  
**OCEAN PINES - 3 UNIT - BLDG. 9 - A,B&C**  
**WILDWOOD LANE**  
**BOURNE, MA**

REVISIONS:		
MARK:	DATE:	DESCRIPTION:

DATE: SEPT. 20, 2020  
DRAWN BY: B. HART  
PROJECT NO: 2019  
SCALE: 1/4" = 1'-0"  
REVISED: OCT. 4, 2020

SHEET NO.

**A1**



### ROOF FRAMING PLAN

SCALE: 1/4" = 1'-0"

#### ROOF RAFTERS NOTE:

1. ALL ROOF RAFTERS ARE 2 x 10's @ 16" O.C., UNLESS OTHERWISE NOTED
2. RAFTERS AT COVERED PORCH & FRONT ENTRY(S) ARE 2 x 8's @ 16" O.C.

TITLE:  
**ROOF FRAMING PLAN**

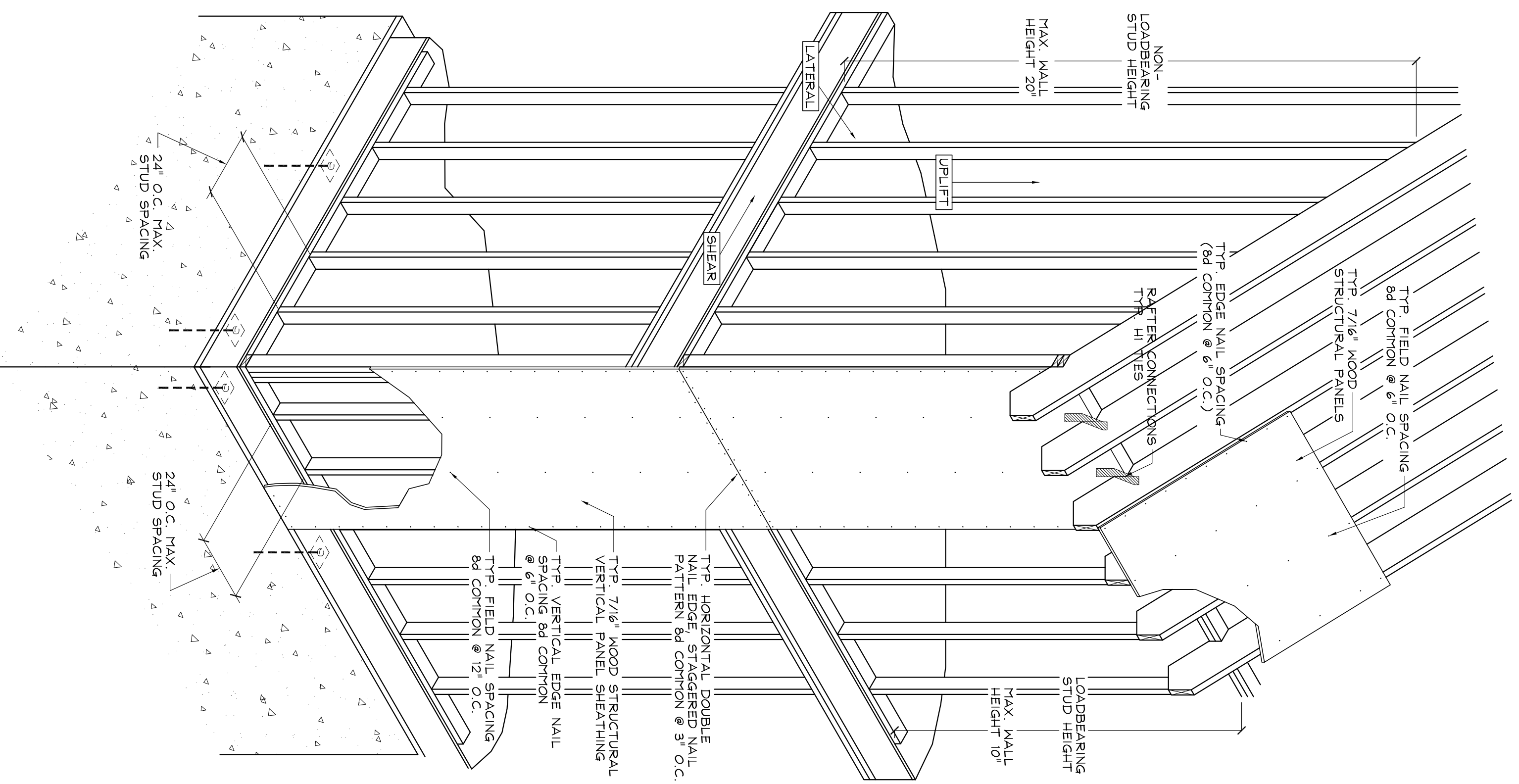
**BRADFORD HART CAD DESIGNS**  
RESIDENTIAL CAD DESIGN SERVICES  
14 FLINT LOCKE DRIVE PLYMOUTH, MA.  
PHONE NO. # (508) 246-8712

PROJECT:  
**HEBB BUILDERS, INC**  
**OCEAN PINES - 3 UNIT - BLDG. 9 - A,B&C**  
**WILDWOOD LANE**  
**BOURNE, MA**

REVISIONS:		
MARK:	DATE:	DESCRIPTION:

DATE: SEPT. 20, 2020  
DRAWN BY: B. HART  
PROJECT NO: 2019  
SCALE: 1/4" = 1'-0"  
REVISED:

SHEET NO.  
**A10**

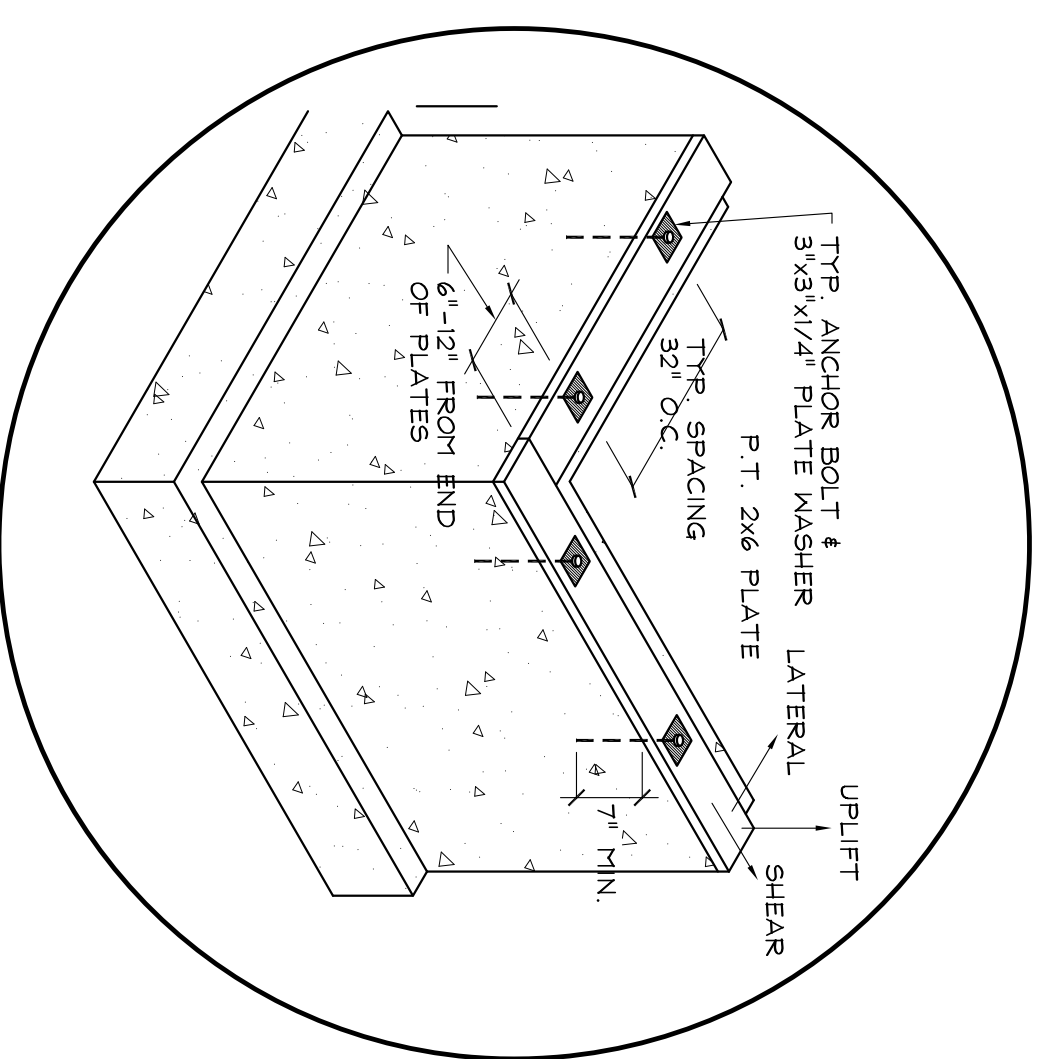


MAXIMUM WALL STUD HEIGHT, STUD SPACING,  
RAFTER CONNECTION AND WALL SHEATHING

JOINT DESCRIPTION	NUMBERS OF COMMON NAILS	NUMBER OF BOX NAILS	NAIL SPACING
ROOF FRAMING			
BLOCKING TO RAFTERS (TOE NAILED)	2-3d	3-10d	EACH END
RIM BOARD TO RAFTER (END NAILED)	2-16d	3-16d	EACH END
WALL FRAMING			
TOP PLATE AT INTERSECTIONS (FACED-NAILED)	4-16d	5-16d	AT JOINTS
STUD TO STUD (FACED NAILED)	2-16d	2-16d	16" O.C. ALONG EDGES
HEADER TO HEADER (FACED NAILED)	16d	16d	
FLOOR FRAMING			
JOIST TO SILL, TOP PLATE OR GIRDER (TOE-NAILED)	4-16d	4-10d	PER JOIST
BLOCKING TO SILL OR TOP PLATE (TOE-NAILED)	3-16d	4-16d	EACH BLOCK
LEADER STRIP TO BEAM OR GIRDER (FACED-NAILED)	3-16d	4-16d	PER JOIST
STUD TO STUD (TOE NAILED)	3-16d	2-10d	PER JOIST
BAND JOIST TO SILL OR TOP PLATE (TOE-NAILED)	2-16d	3-16d	PER JOIST
ROOF SHEATHING			
WOOD STRUCTURAL PANELS	8d	10d	6" EDGE / 6" FIELD
RAFTERS OR TRUSSES SPACED UP TO 16" O.C.	8d	10d	6" EDGE / 6" FIELD
RAFTERS OR TRUSSES SPACED OVER 16" O.C.	8d	10d	6" EDGE / 6" FIELD
GABLE ENDWALL, RAKE OR RAKE TRUSS	8d	10d	6" EDGE / 6" FIELD
GABLE ENDWALL, RAKE OR RAKE TRUSS WITH NO GABLE OVERHANG	8d	10d	6" EDGE / 6" FIELD
CASH STRUCTURAL OVERLOOKERS TRUSS WITH LOCKOUT BLOCKS	8d	10d	4" EDGE / 4" FIELD
CEILING SHEATHING			
GYP-SUR WALLBOARD	5d COOLERS	-	7" EDGE / 10" FIELD
WALL SHEATHING			
WOOD STRUCTURAL PANELS	8d	10d	6" EDGE / 12" FIELD
STUDS SPACED UP TO 24" O.C.	8d	-	3" EDGE / 6" FIELD
1/2" GYP-SUR WALLBOARD	5d COOLERS	-	7" EDGE / 10" FIELD
FLOOR SHEATHING			
WOOD STRUCTURAL PANELS	8d	10d	6" EDGE / 12" FIELD
1" OR LESS	10d	10d	6" EDGE / 6" FIELD
GREATER THAN 1"			

GENERAL NAILING SCHEDULE

HEADER SPAN (FT.)	MINIMUM HEADER SIZE	REQUIREMENTS AT EACH END OF HEADER	UP-LIFT (LB.)	LATERAL (LB.)
2'	2-2x4	1	277	132
3'	2-2x4	2	584	264
4'	2-2x4	3	630	330
5'	2-2x4	3	831	396
6'	2-2x6	3	910	462
8'	2-2x6	3	1100	550
9'	3-2x10	4	1247	624
10'	3-2x12	4	1385	680
11'	4-2x12	4	1524	726



TYP. ANCHOR BOLT SPACING  
(CONCRETE BASEMENT)

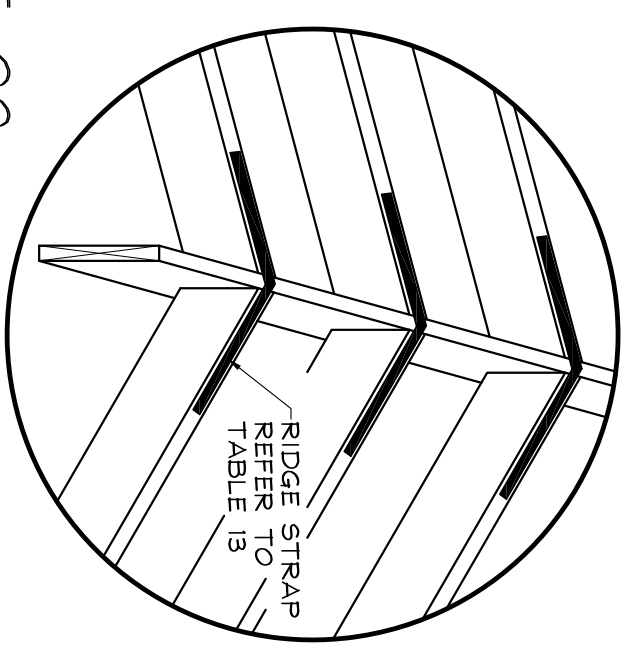


FIGURE 20

RIDGE BAND STRAP

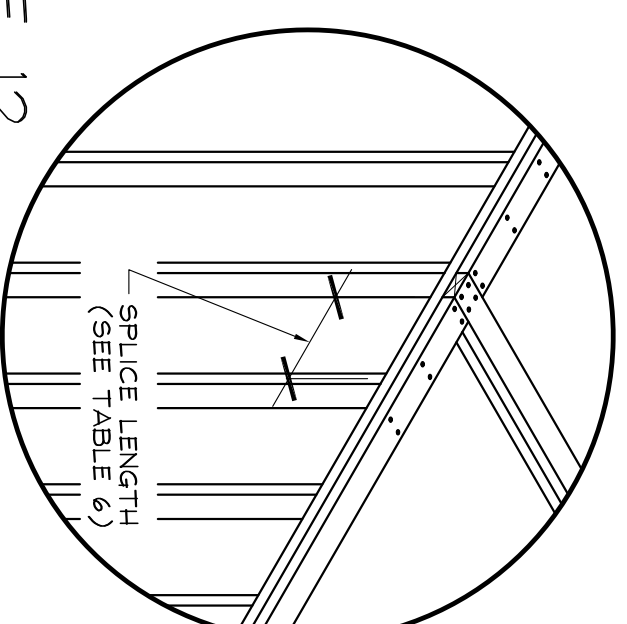


FIGURE 12

TOP PLATE INTERSTION DETAIL

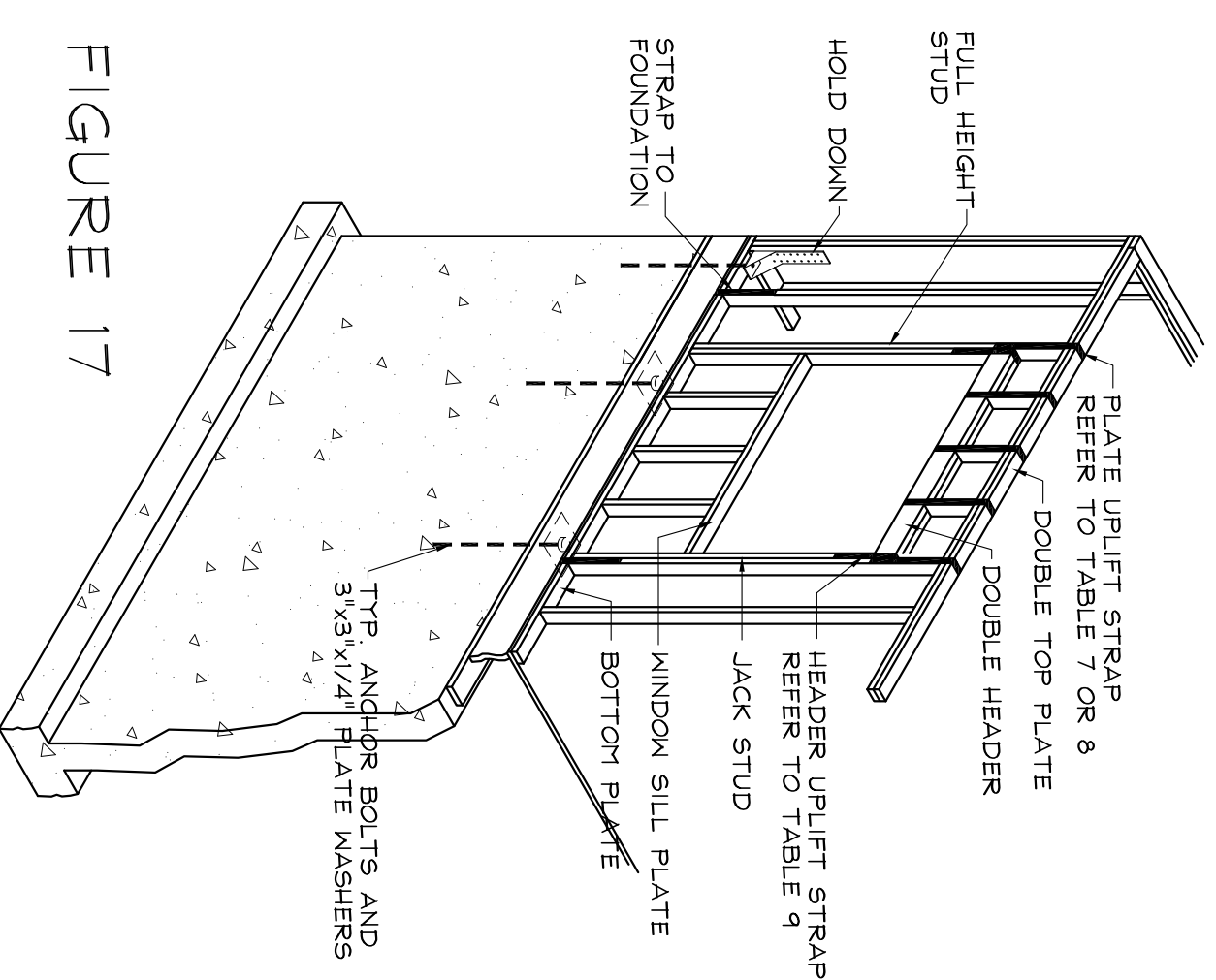


FIGURE 17

STUDS AND HEADERS  
AROUND WALL OPENINGS

TITLE:  
**DETAILS**

**BRADFORD HART CAD DESIGNS**  
RESIDENTIAL CAD DESIGN SERVICES  
14 FLINT LOCKE DRIVE PLYMOUTH, MA.  
PHONE NO. # (508) 246-8712

PROJECT:  
**HEBB BUILDERS, INC  
OCEAN PINES - 3 UNIT - BLDG. 9 - A,B&C  
WILDWOOD LANE  
BOURNE, MA**

REVISIONS:

MARK:	DATE:	DESCRIPTION:

DATE: AUG. 17, 2020  
DRAWN BY: B. HART  
PROJECT NO: 2016  
SCALE: 1/4" = 1'-0"  
REVISED:

SHEET NO.  
**A11**

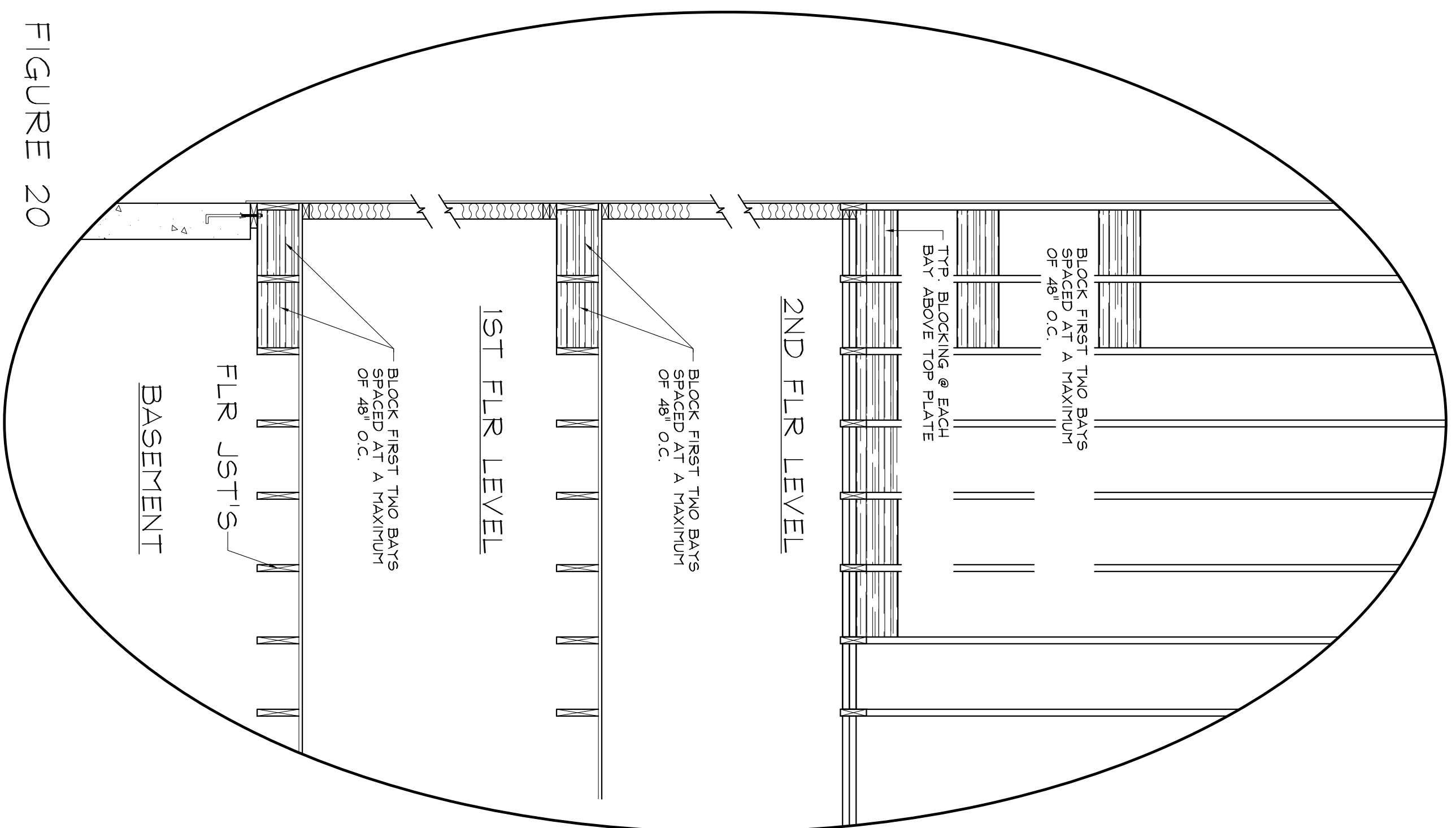
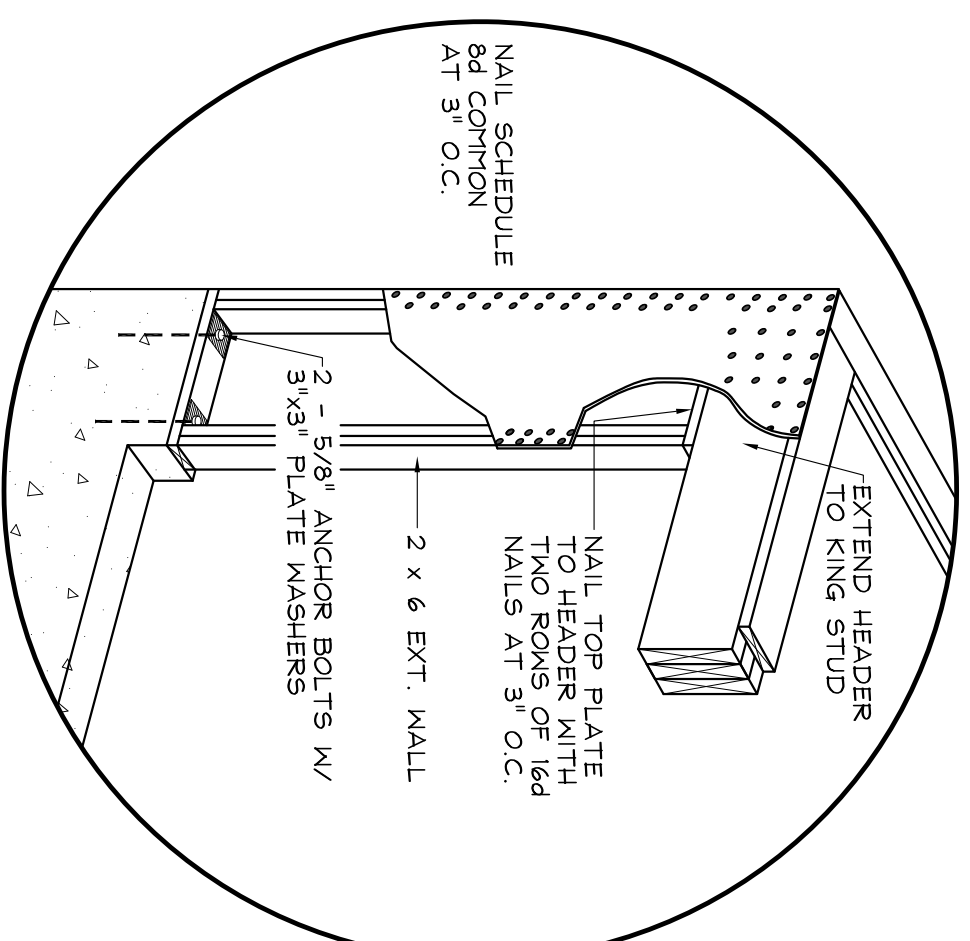


FIGURE 20  
FLOOR & RAFTER BRACING



GARAGE OPENING DETAILS

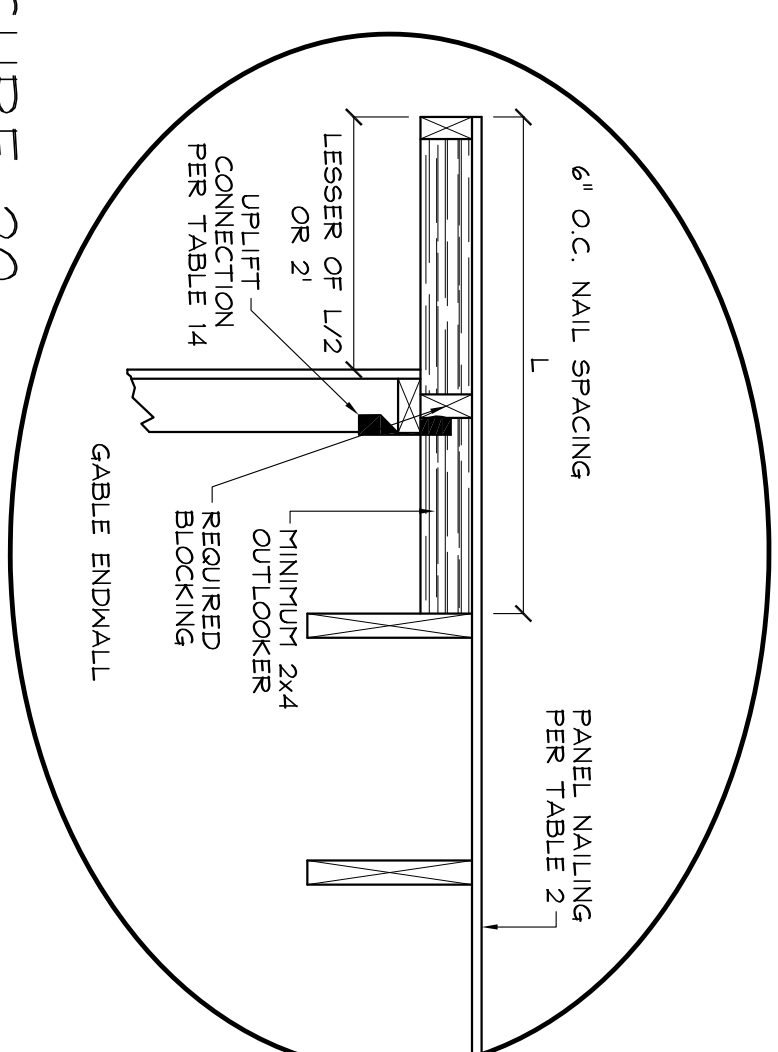


FIGURE 20  
RAFTER OUTLOOKER DETAILS

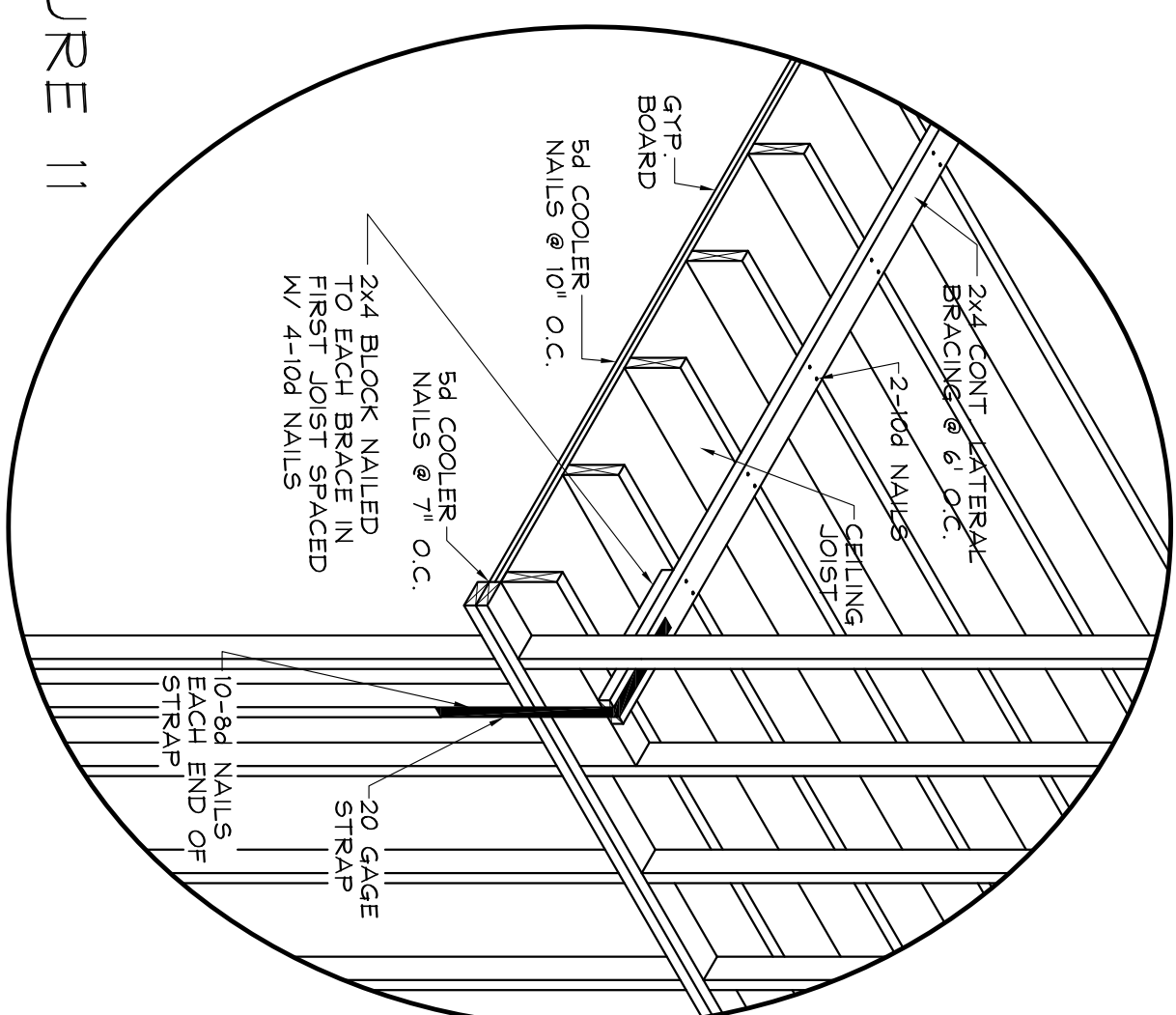


FIGURE 11  
CEILING BRACING  
GABLE ENDWALL

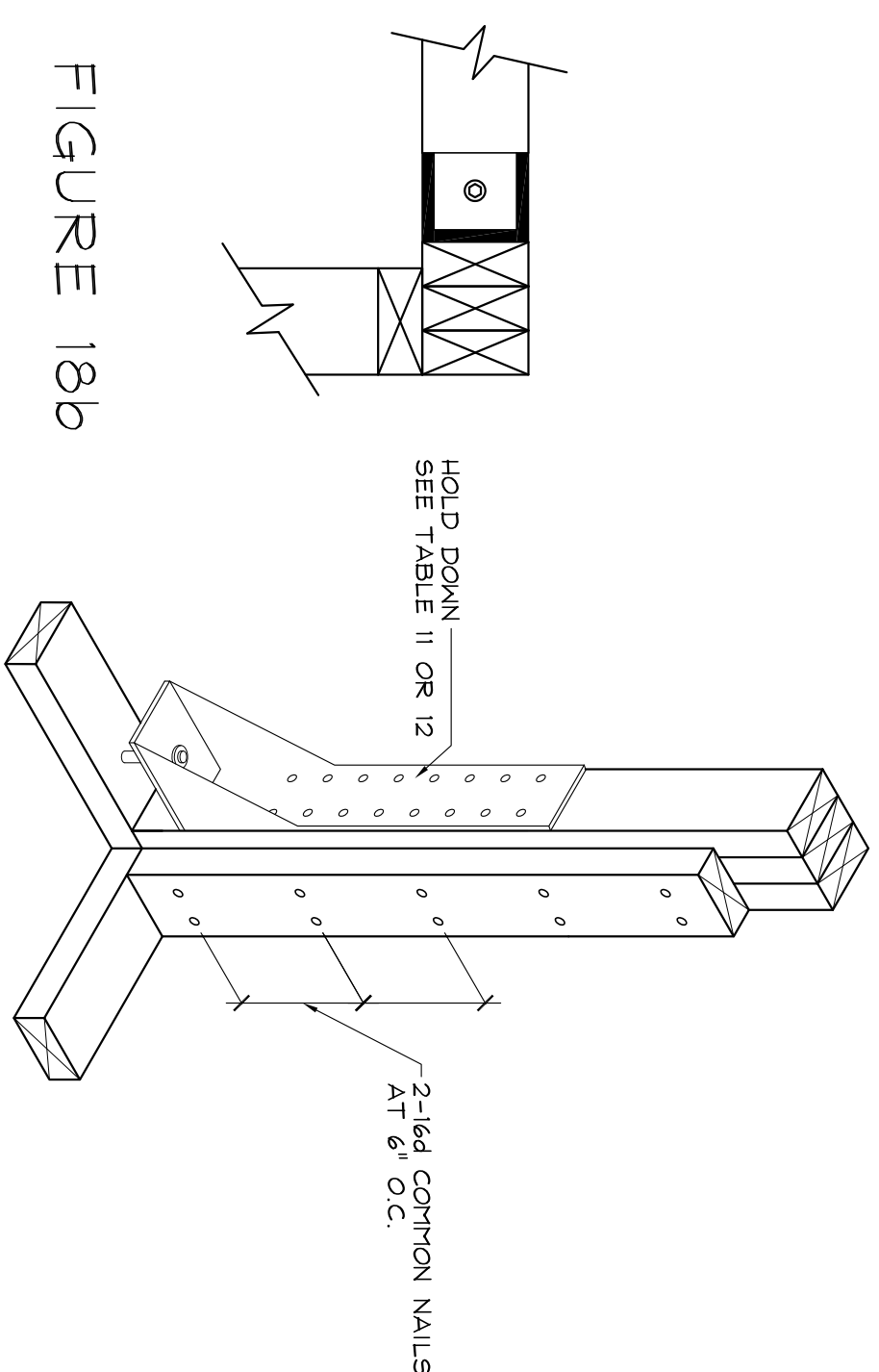


FIGURE 18b  
CORNER STUD HOLD DOWN  
DETAILS - 4 STUDS

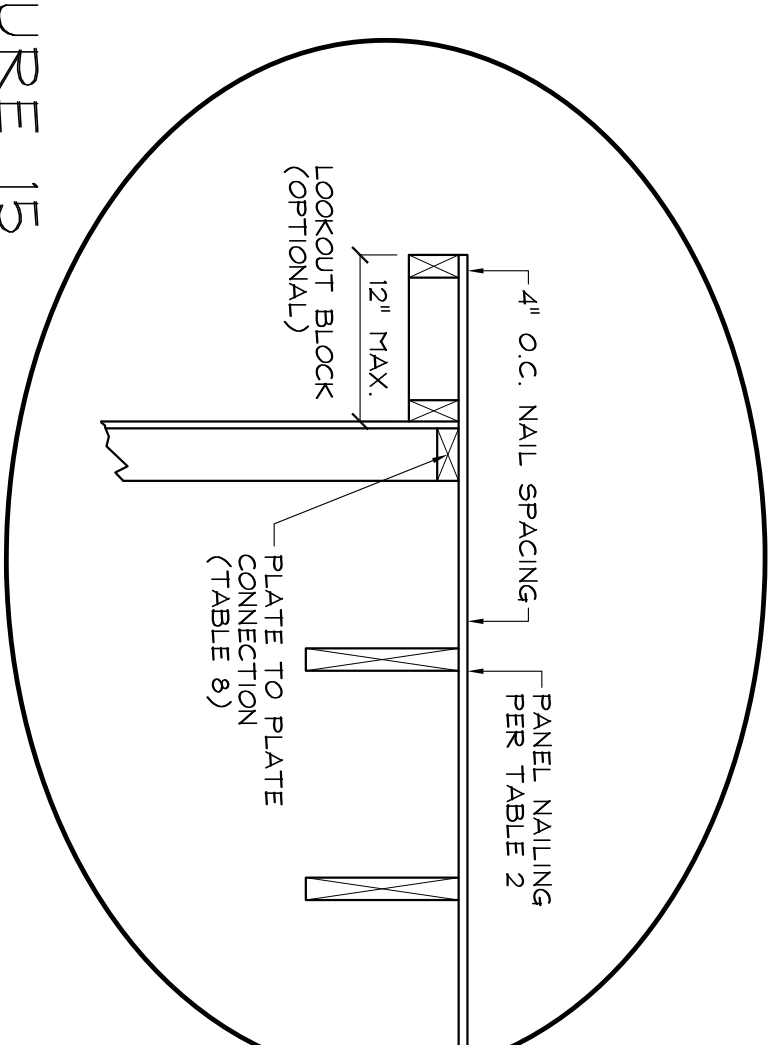


FIGURE 15  
FULL-HEIGHT GABLE  
ENDWALL STUD

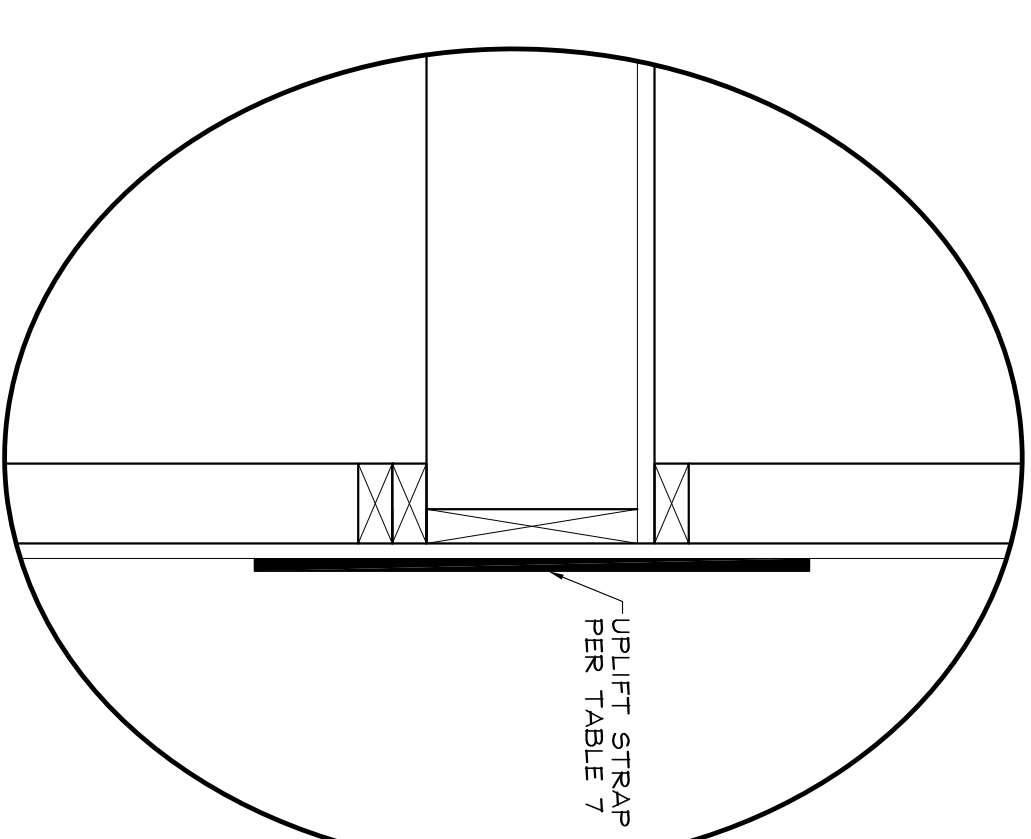


FIGURE 14  
STORY TO STORY  
UPLIFT CONNECTIONS

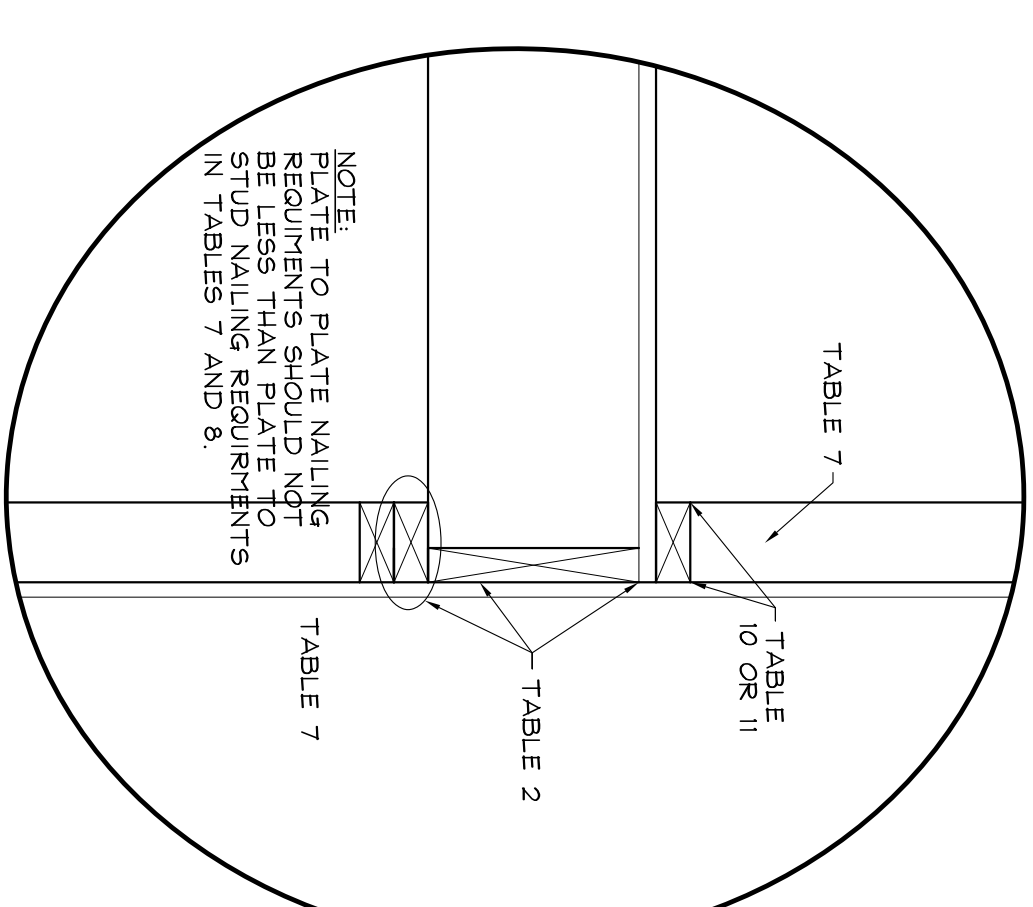


FIGURE 14  
STORY TO STORY  
LATERAL CONNECTIONS

TITLE:  
**DETAILS**

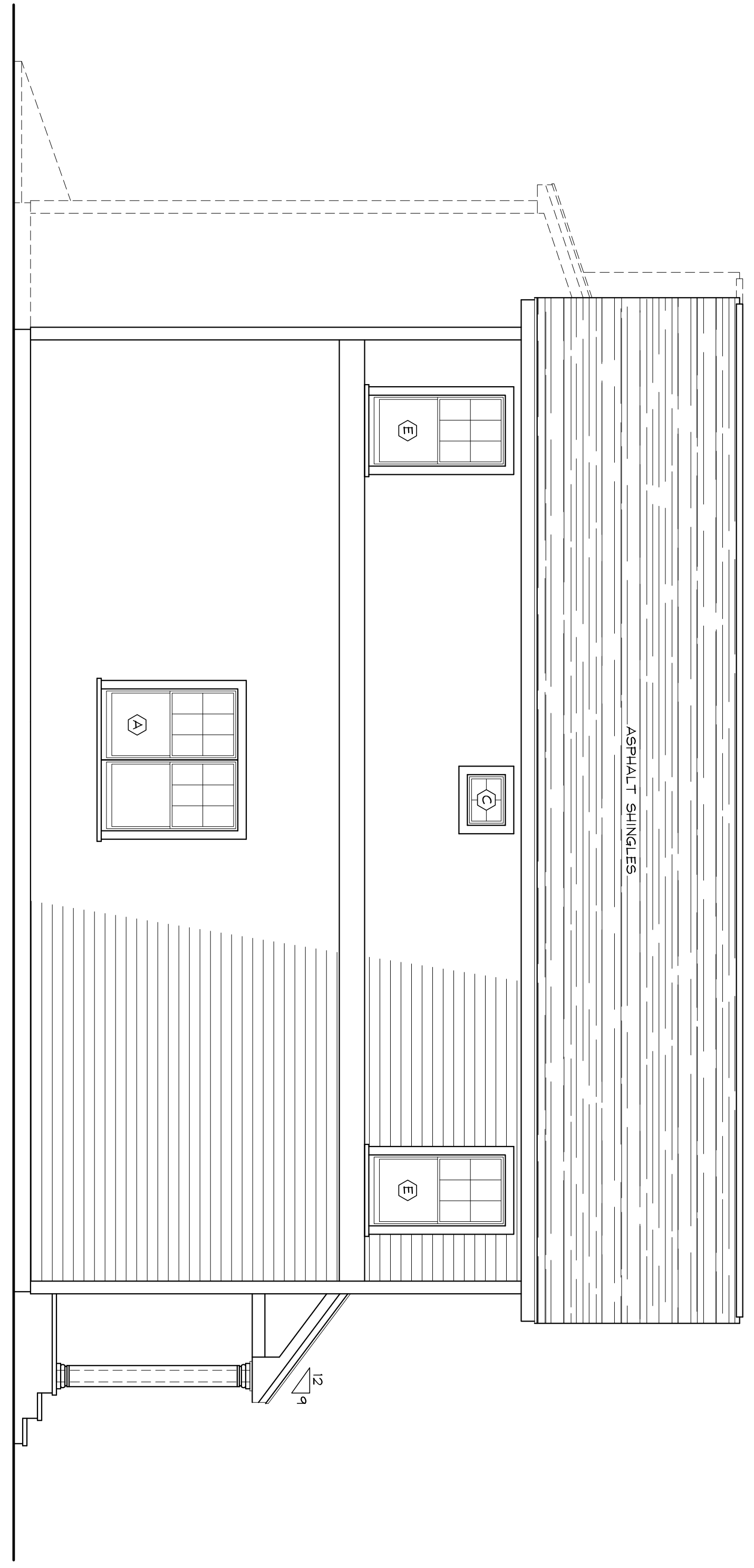
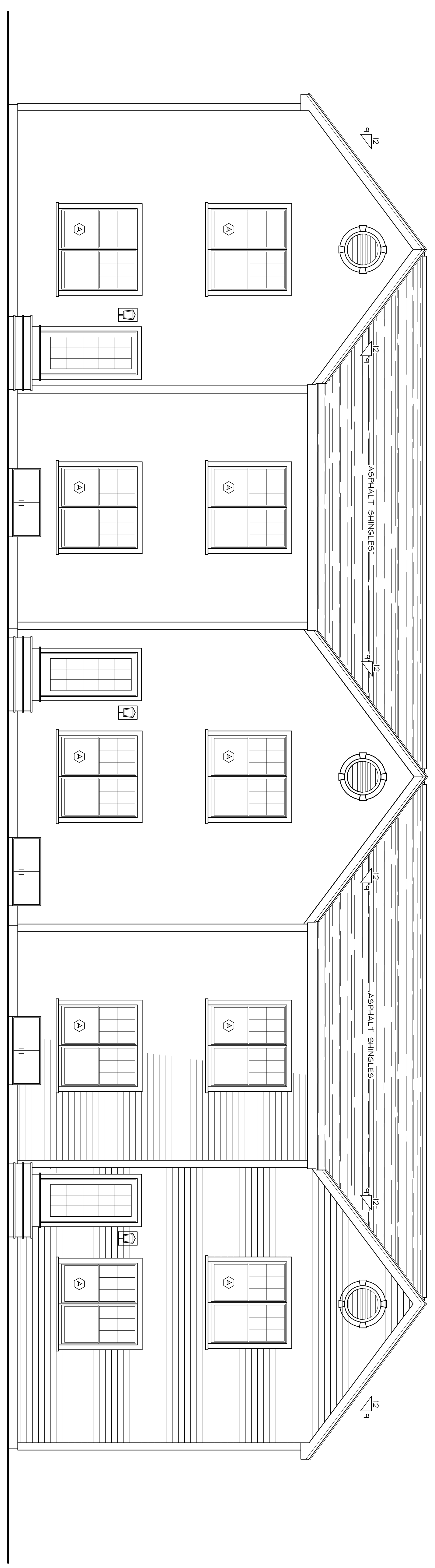
**BRADFORD HART CAD DESIGNS**  
RESIDENTIAL CAD DESIGN SERVICES  
14 FLINT LOCKE DRIVE PLYMOUTH, MA.  
PHONE NO. # (508) 246-8712

PROJECT:  
**HEBB BUILDERS, INC**  
**OCEAN PINES - 3 UNIT - BLDG. 9 - A,B&C**  
**WILDWOOD LANE**  
**BOURNE, MA**

REVISIONS:		
MARK:	DATE:	DESCRIPTION:

DATE:  
AUG. 17, 2020  
DRAWN BY:  
B. HART  
PROJECT NO.:  
2016  
SCALE:  
1/4" = 1'-0"  
REVISED:

SHEET NO.  
**A12**



TITLE:  
**ELEVATIONS**

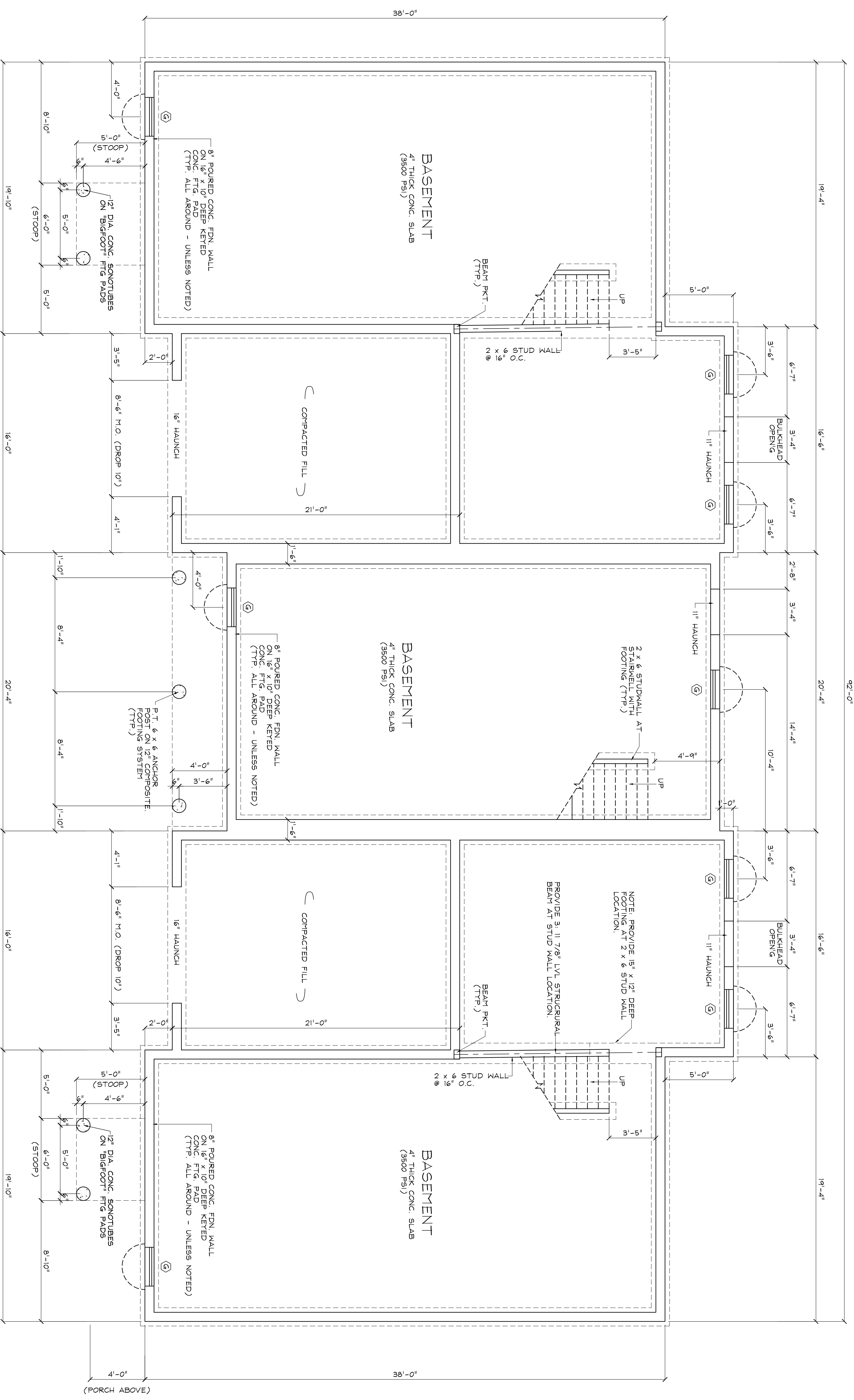
**BRADFORD HART CAD DESIGNS**  
RESIDENTIAL CAD DESIGN SERVICES  
14 FLINT LOCKE DRIVE PLYMOUTH, MA.  
PHONE NO. # (508) 246-8712

PROJECT:  
**HEBB BUILDERS, INC  
OCEAN PINES - 3 UNIT - BLDG. 9 - A,B&C  
WILDWOOD LANE  
BOURNE, MA**

REVISIONS:		
MARK:	DATE:	DESCRIPTION:

DATE: SEPT. 20, 2020  
DRAWN BY: B. HART  
PROJECT NO: 2019  
SCALE: 1/4" = 1'-0"  
REVISED: OCT. 4, 2020

SHEET NO.  
**A2**



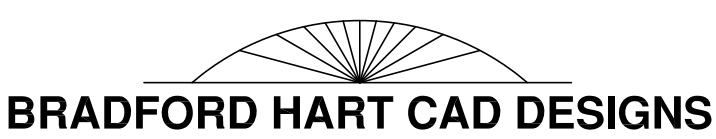
**FOUNDATION PLAN**

SCALE: 1/4" = 1'-0"

**FOUNDATION NOTES:**

1. FOUNDATION CONTRACTOR SHALL VERIFY WITH G.C. FOR EXACT HT. AND LOCATION OF FDN WALL PRIOR TO POURING
2. BLACK TAR WATERPROOF AT EXT. FOUNDATION
3. 5/8" ANCHOR BOLTS @ 32" O.C.

TITLE:	<b>FOUNDATION PLAN</b>
--------	------------------------

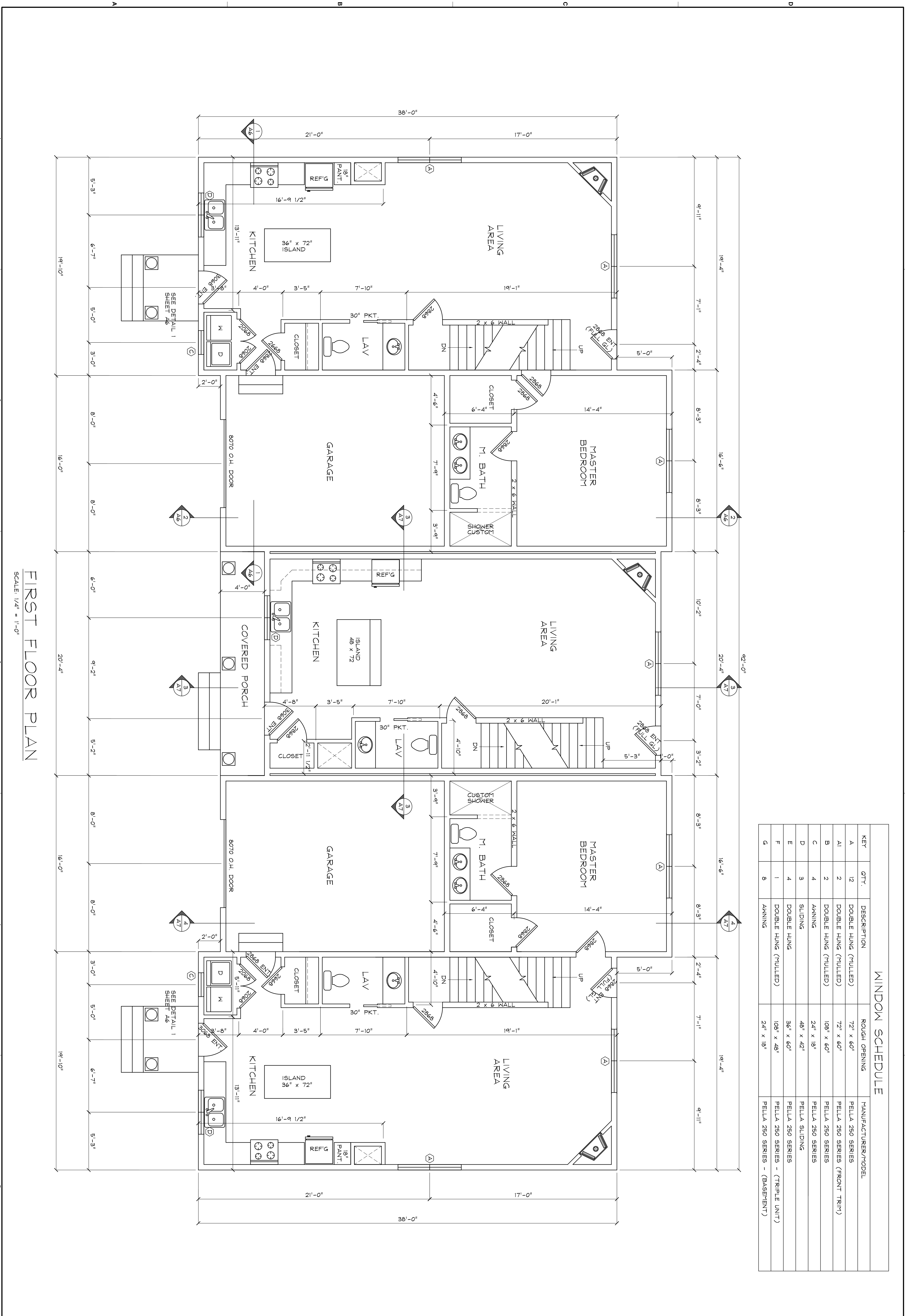
  
**BRADFORD HART CAD DESIGNS**  
 RESIDENTIAL CAD DESIGN SERVICES  
 14 FLINT LOCKE DRIVE PLYMOUTH, MA.  
 PHONE NO. # (508) 246-8712

PROJECT:	<b>HEBB BUILDERS, INC OCEAN PINES - 3 UNIT - BLDG. 9 - A,B&amp;C WILDWOOD LANE BOURNE, MA</b>
----------	---

REVISIONS:		
MARK:	DATE:	DESCRIPTION:

DATE:	SEPT. 20, 2020
DRAWN BY:	B. HART
PROJECT NO.:	
SCALE:	1/4" = 1'-0"
REVISED:	OCT. 4, 2020

SHEET NO. **A3**



**FIRST FLOOR PLAN**  
SCALE: 1/4" = 1'-0"

**WINDOW SCHEDULE**

KEY	QTY.	DESCRIPTION	ROUGH OPENING	MANUFACTURER/MODEL
A	12	DOUBLE HUNG (PULLED)	72" x 60"	PELLA 250 SERIES
A1	2	DOUBLE HUNG (PULLED)	72" x 60"	PELLA 250 SERIES (FRONT TRIM)
B	2	DOUBLE HUNG (PULLED)	108" x 60"	PELLA 250 SERIES
C	4	AWNING	24" x 18"	PELLA 250 SERIES
D	3	SLIDING	48" x 42"	PELLA SLIDING
E	4	DOUBLE HUNG	36" x 60"	PELLA 250 SERIES
F	1	DOUBLE HUNG (PULLED)	108" x 48"	PELLA 250 SERIES - (TRIPLE UNIT)
G	8	AWNING	24" x 18"	PELLA 250 SERIES - (BASEMENT)

TITLE:  
**FIRST FLOOR PLAN**

**BRADFORD HART CAD DESIGNS**  
RESIDENTIAL CAD DESIGN SERVICES  
14 FLINT LOCKE DRIVE PLYMOUTH, MA.  
PHONE NO. # (508) 246-8712

PROJECT:  
**HEBB BUILDERS, INC**  
**OCEAN PINES - 3 UNIT - BLDG. 9 - A,B&C**  
**WILDWOOD LANE**  
**BOURNE, MA**

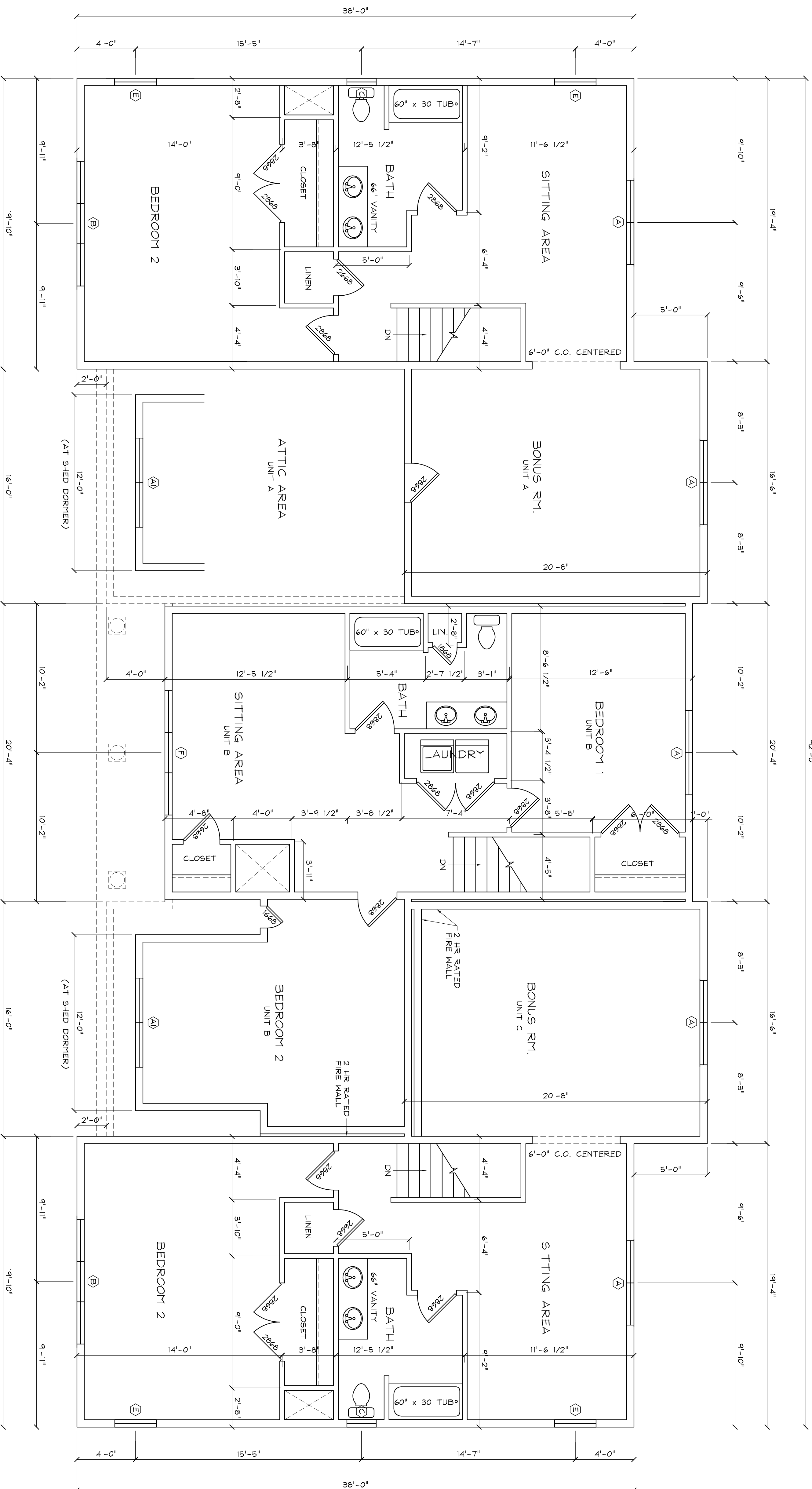
REVISIONS:

MARK:	DATE:	DESCRIPTION:

DATE: SEPT. 20, 2020  
DRAWN BY: B. HART  
PROJECT NO: 2019  
SCALE: 1/4" = 1'-0"  
REVISED: OCT. 4, 2020

SHEET NO.  
**A4**

WINDOW SCHEDULE				
KEY	QTY.	DESCRIPTION	ROUGH OPENING	MANUFACTURER/MODEL
A	12	DOUBLE HUNG (PULLED)	72" x 60"	PELLA 250 SERIES
A1	2	DOUBLE HUNG (PULLED)	72" x 60"	PELLA 250 SERIES (FRONT TRIM)
B	2	DOUBLE HUNG (PULLED)	108" x 60"	PELLA 250 SERIES
C	4	AWNING	24" x 18"	PELLA 250 SERIES
D	3	SLIDING	48" x 42"	PELLA SLIDING
E	4	DOUBLE HUNG	36" x 60"	PELLA 250 SERIES
F	1	DOUBLE HUNG (PULLED)	108" x 48"	PELLA 250 SERIES - (TRIPLE UNIT)
G	8	AWNING	24" x 18"	PELLA 250 SERIES - (BASEMENT)



SECOND FLOOR PLAN  
SCALE: 1/4" = 1'-0"

TITLE:  
**SECOND FLOOR PLAN**

**BRADFORD HART CAD DESIGNS**  
RESIDENTIAL CAD DESIGN SERVICES  
14 FLINT LOCKE DRIVE PLYMOUTH, MA.  
PHONE NO. # (508) 246-8712

PROJECT:  
**HEBB BUILDERS, INC  
OCEAN PINES - 3 UNIT - BLDG. 9 - A,B&C  
WILDWOOD LANE  
BOURNE, MA**

REVISIONS:		
MARK:	DATE:	DESCRIPTION:

DATE: AUG. 17, 2020  
DRAWN BY: B. HART  
PROJECT NO: 2016  
SCALE: 1/4" = 1'-0"  
REVISED: OCT. 4, 2020

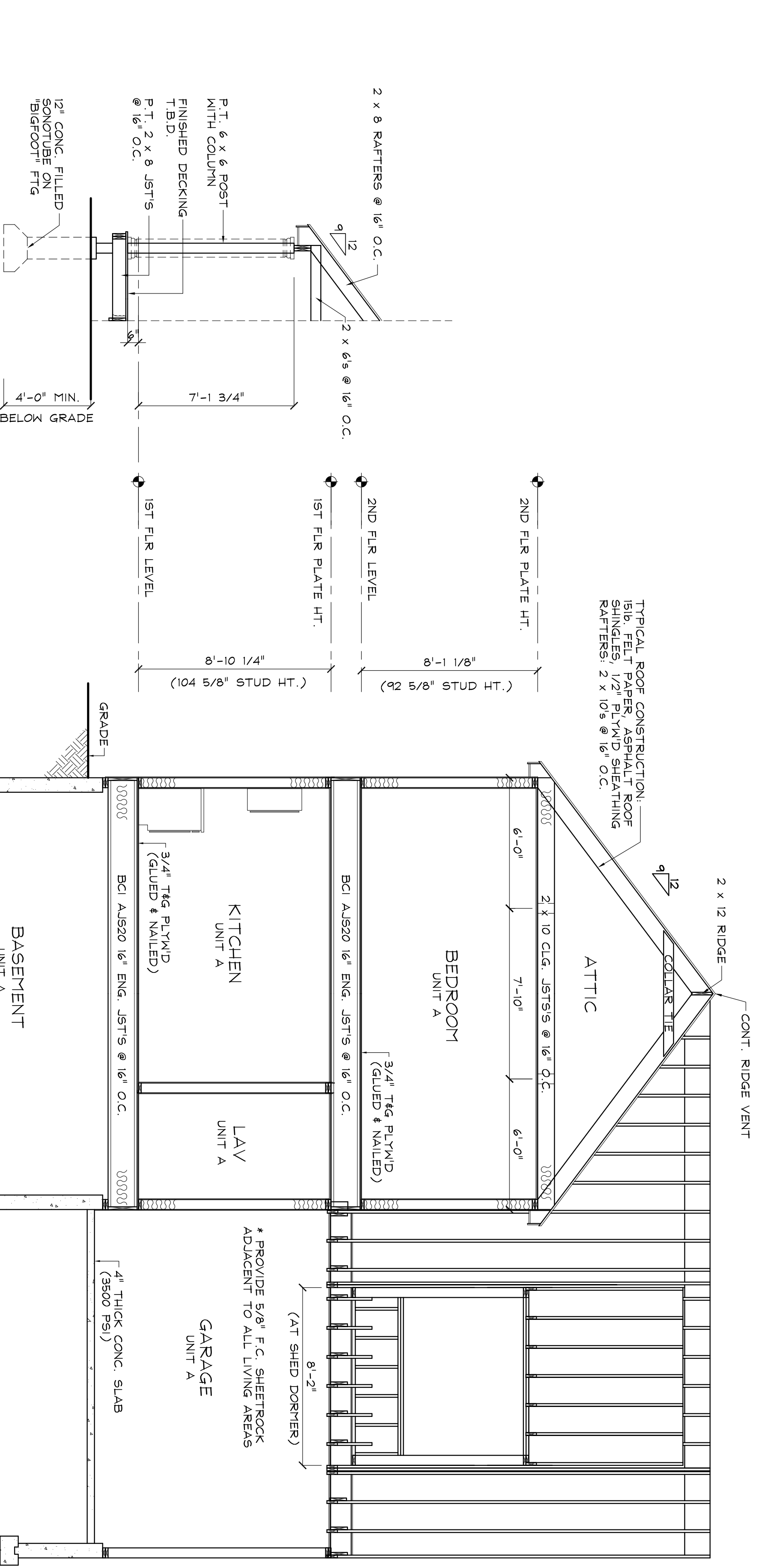
SHEET NO.  
**A5**



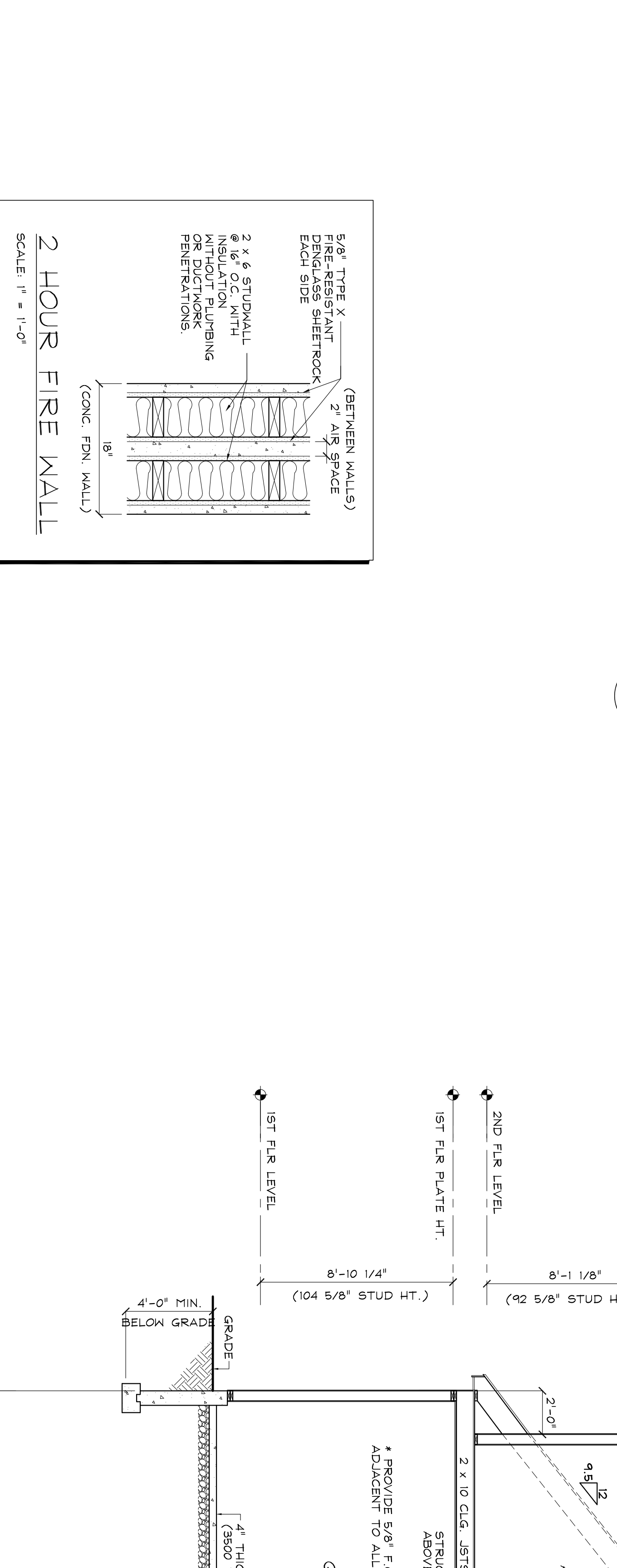
KEY	QTY.	DESCRIPTION	ROUGH OPENING	MANUFACTURER/MODEL
A	10	DOUBLE HUNG (FULLLED)	72" x 57 1/4"	UNITED NC 5900 - 2: 2-10 x 4-6
A1	2	DOUBLE HUNG (FULLLED)	72" x 57 1/4"	UNITED NC 5900 - 2: 2-10 x 4-6 (FRONT TRIM)
B	2	DOUBLE HUNG (FULLLED)	108" x 57 1/4"	UNITED NC 5900 - 3: 2-10 x 4-6
C	2	DOUBLE HUNG	26" x 41 1/4"	UNITED NC 5900 - 2-0 x 3-2
D	1	DOUBLE HUNG (FULLLED)	52" x 41 1/4"	UNITED NC 5900 - 2: 2-0 x 3-2
E	2	DOUBLE HUNG (FULLLED)	46 1/4" x 41"	UNITED NC 5900 - 2: 2-0 x 3-2
F	1	DOUBLE HUNG (FULLLED)	108" x 49 1/4"	UNITED NC 5900 - 3: 2-10 x 4-0
G	4	DOUBLE HUNG	34" x 57 1/4"	UNITED NC 5900 - 2: 2-0 x 3-2
H	5	HOPPER	34" x 14"	BASEMENT WINDOWS (REAR)

**TABLE 9, WALL OPENINGS - HDRS IN NON-LOADBEARING WALLS**

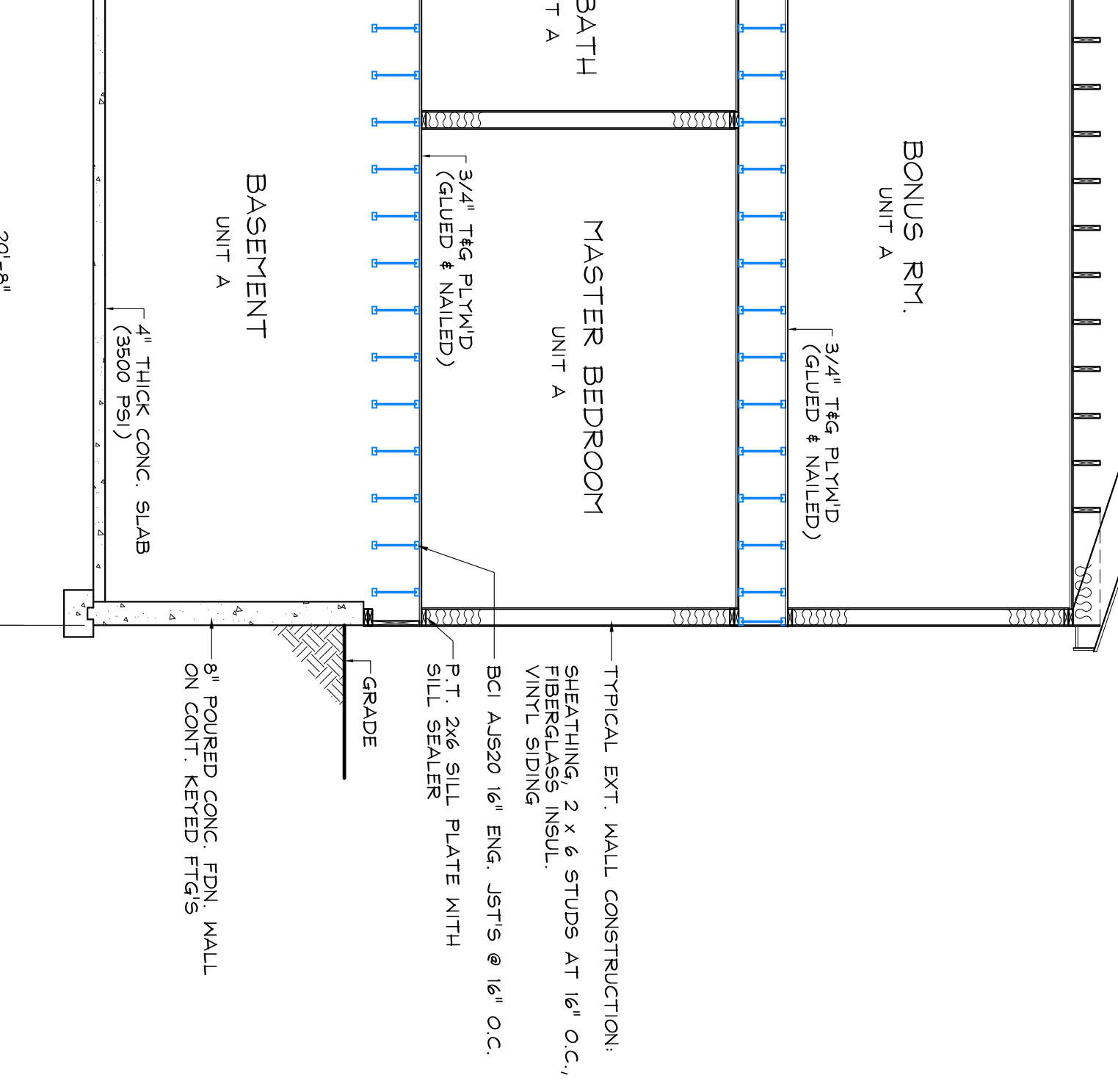
HEADER SPAN (FT.)	MINIMUM HEADER SIZE	REQUIREMENTS AT EACH END OF HEADER	UPLIFT (LB)	LATERAL (LB)
2'	1-2x4 FLAT	1	60	132
3'	1-2x4 FLAT	2	90	196
4'	1-2x4 FLAT	2	120	264
5'	1-2x4 FLAT	3	150	330
6'	1-2x4 FLAT	3	180	396
7'	1-2x6 FLAT	3	210	462
8'	1-2x6 FLAT	3	240	528
9'	2-2x6 FLAT	3	270	594
10'	2-2x6 FLAT	4	300	660
11'	2-2x6 FLAT	4	330	726
12'	2-2x6 FLAT	5	360	792



**SECTION 1**  
SCALE: 1/4" = 1'-0"



**SECTION 2**  
SCALE: 1/4" = 1'-0"



MARK	DATE	DESCRIPTION

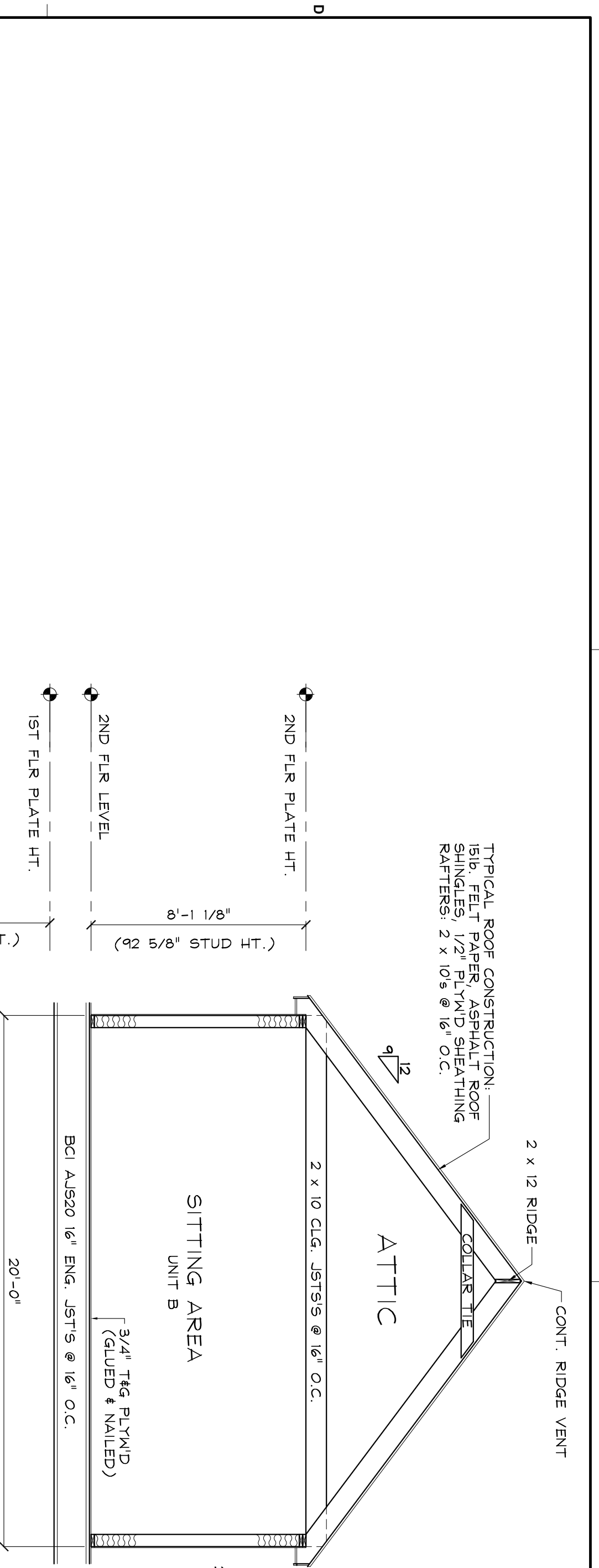
PROJECT:  
**HEBB BUILDERS, INC**  
**OCEAN PINES - 3 UNIT - BLDG. 9 - A,B&C**  
**WILDORNE LANE**  
**BOURNE, MA**

**BRADFORD HART CAD DESIGNS**  
 RESIDENTIAL CAD DESIGN SERVICES  
 14 FLINT LOCKE DRIVE PLYMOUTH, MA.  
 PHONE NO. # (508) 246-8712

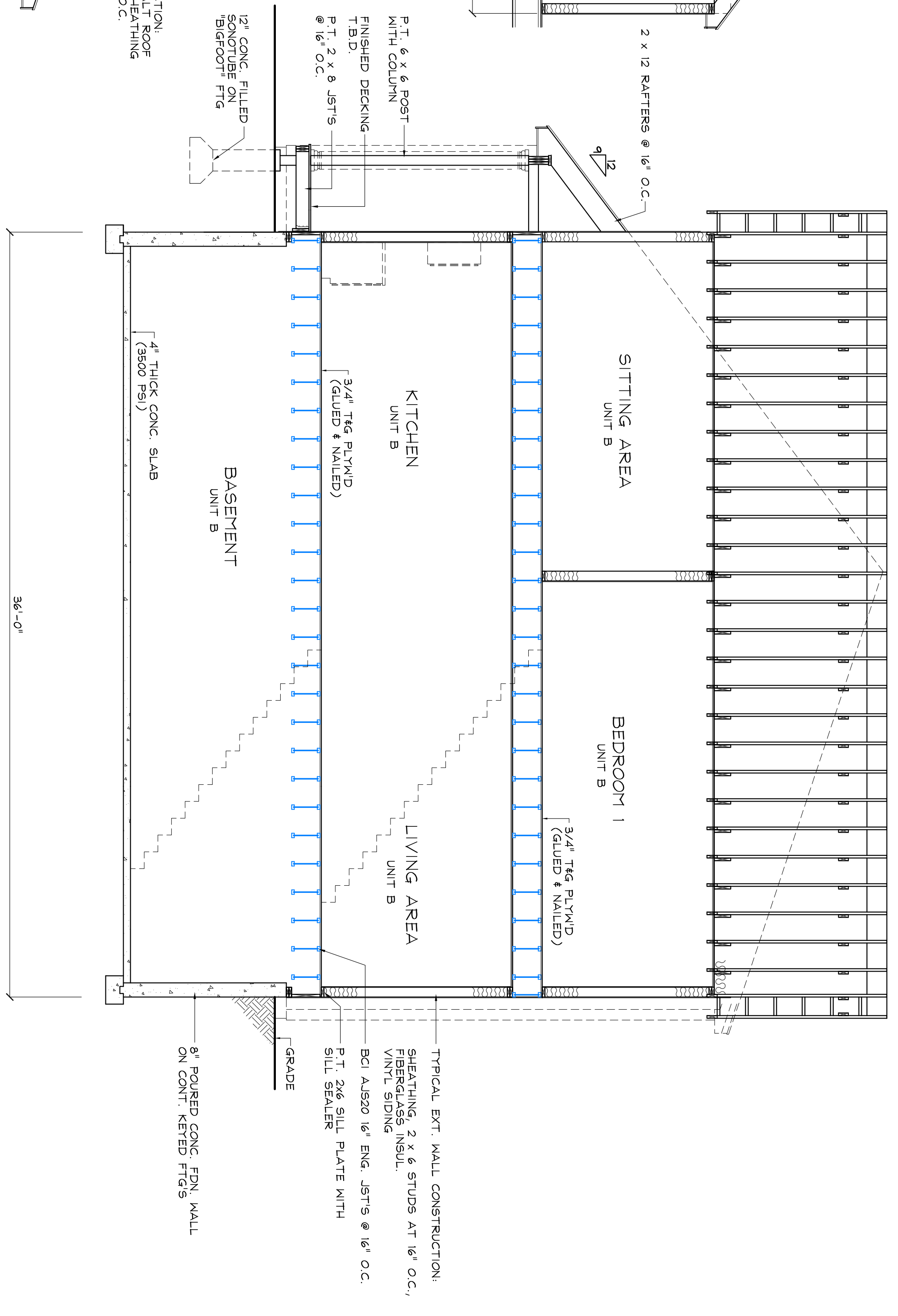
TITLE:  
**SECTIONS**

SHEET NO.  
**A6**

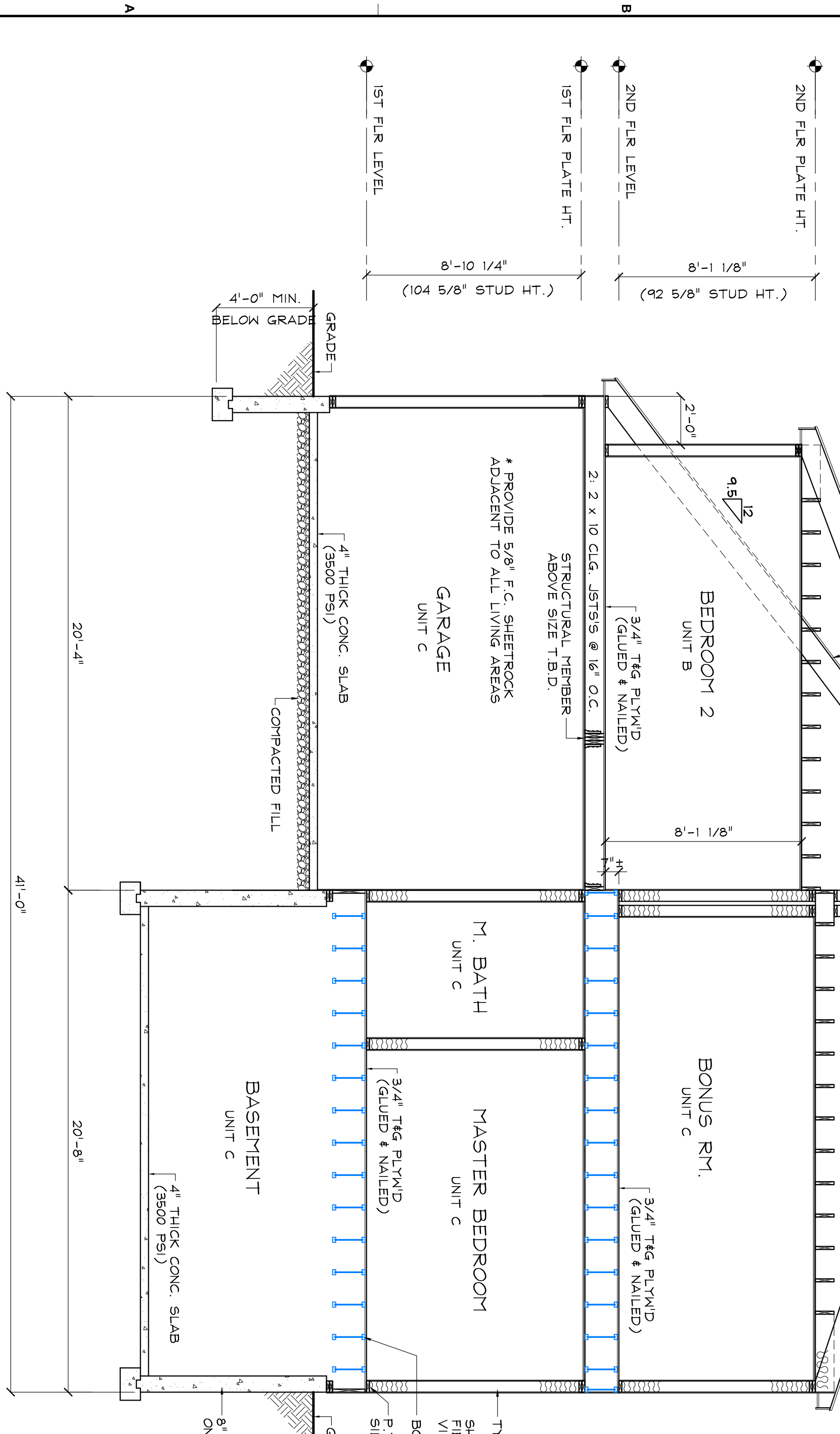
DATE: SEPT. 20, 2020  
 DRAWN BY: B. HART  
 PROJECT NO: 2019  
 SCALE: 1/4" = 1'-0"  
 REVISED:



UNIT B - DORMER SECTION  
SCALE: 1/4" = 1'-0"



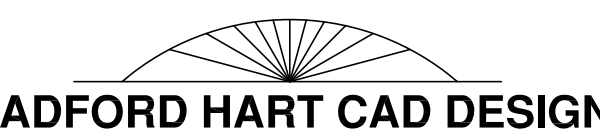
SECTION 3  
SCALE: 1/4" = 1'-0"



SECTION 4  
SCALE: 1/4" = 1'-0"

TITLE:

**SECTIONS**

  
**BRADFORD HART CAD DESIGNS**  
 RESIDENTIAL CAD DESIGN SERVICES  
 14 FLINT LOCKE DRIVE PLYMOUTH, MA.  
 PHONE NO. # (508) 246-8712

PROJECT:

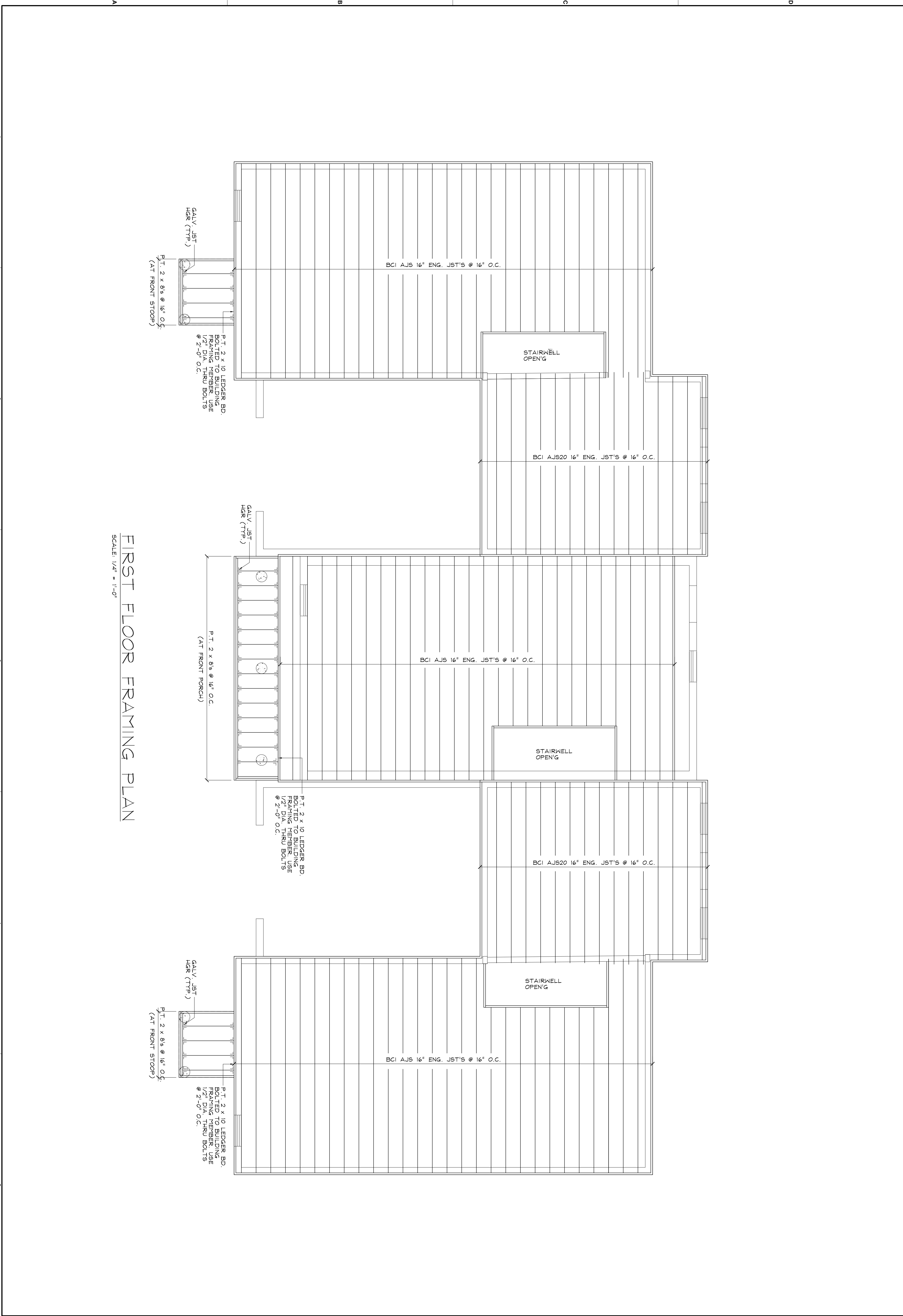
**HEBB BUILDERS, INC**  
**OCEAN PINES - 3 UNIT - BLDG. 9 - A,B&C**  
**WILDWOOD LANE**  
**BOURNE, MA**

REVISIONS:

MARK:	DATE:	DESCRIPTION:

DATE: SEPT. 20, 2020  
 DRAWN BY: B. HART  
 PROJECT NO: 2019  
 SCALE: 1/4" = 1'-0"  
 REVISED:

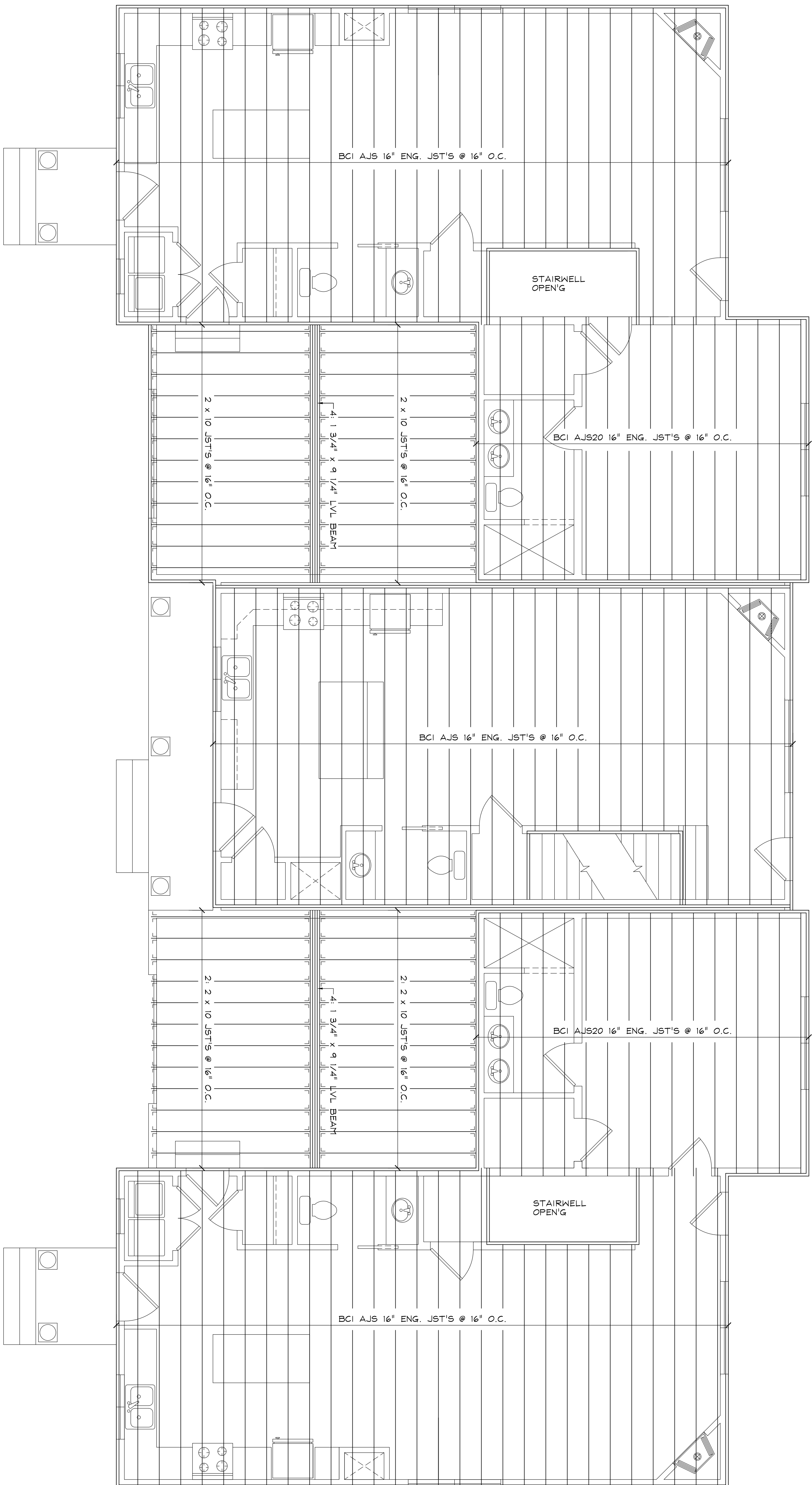
SHEET NO. **A7**



**FIRST FLOOR FRAMING PLAN**  
SCALE: 1/4" = 1'-0"

1 2 3 4 5

<p><b>A8</b></p>	<p><b>REVISIONS:</b></p> <table border="1" style="width: 100%; border-collapse: collapse;"> <thead> <tr> <th style="text-align: left;">MARK:</th> <th style="text-align: left;">DATE:</th> <th style="text-align: left;">DESCRIPTION:</th> </tr> </thead> <tbody> <tr><td> </td><td> </td><td> </td></tr> <tr><td> </td><td> </td><td> </td></tr> <tr><td> </td><td> </td><td> </td></tr> <tr><td> </td><td> </td><td> </td></tr> </tbody> </table>	MARK:	DATE:	DESCRIPTION:													<p>PROJECT:</p> <p><b>HEBB BUILDERS, INC</b> <b>OCEAN PINES - 3 UNIT - BLDG. 9 - A,B&amp;C</b> <b>WILDWOOD LANE</b> <b>BOURNE, MA</b></p>	<p><b>BRADFORD HART CAD DESIGNS</b> RESIDENTIAL CAD DESIGN SERVICES 14 FLINT LOCKE DRIVE PLYMOUTH, MA. PHONE NO. # (508) 246-8712</p>	<p>TITLE:</p> <p><b>FIRST FLOOR FRAMING</b></p>
MARK:	DATE:	DESCRIPTION:																	
<p>SHEET NO.</p>	<p>DATE: SEPT. 20, 2020</p> <p>DRAWN BY: B. HART</p> <p>PROJECT NO: 2019</p> <p>SCALE: 1/4" = 1'-0"</p> <p>REVISED:</p>																		



SECOND FLOOR FRAMING PLAN

SCALE: 1/4" = 1'-0"

TITLE:  
**SECOND FLOOR FRAMING PLAN**

**BRADFORD HART CAD DESIGNS**  
RESIDENTIAL CAD DESIGN SERVICES  
14 FLINT LOCKE DRIVE PLYMOUTH, MA.  
PHONE NO. # (508) 246-8712

PROJECT:  
**HEBB BUILDERS, INC**  
**OCEAN PINES - 3 UNIT - BLDG. 9 - A,B&C**  
**WILDWOOD LANE**  
**BOURNE, MA**

REVISIONS:		
MARK:	DATE:	DESCRIPTION:

DATE: SEPT. 20, 2020  
DRAWN BY: B. HART  
PROJECT NO: 2019  
SCALE: 1/4" = 1'-0"  
REVISED:

SHEET NO.  
**A9**