

Queen Sewell Pond Watershed Action Plan

Neighborhood
Meeting

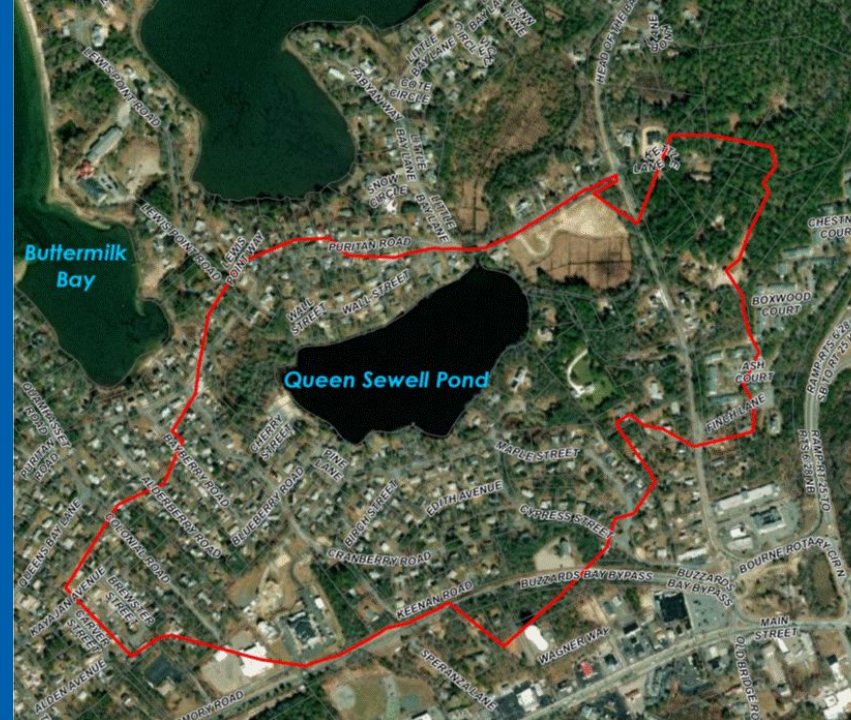
August 8, 2023



*This project is funded by a grant from the Buzzards Bay National Estuary Program (NEP), through the Executive Office of Energy and Environmental Affairs - Reference No: BD-23-1042-CZM-ENV40-82476.

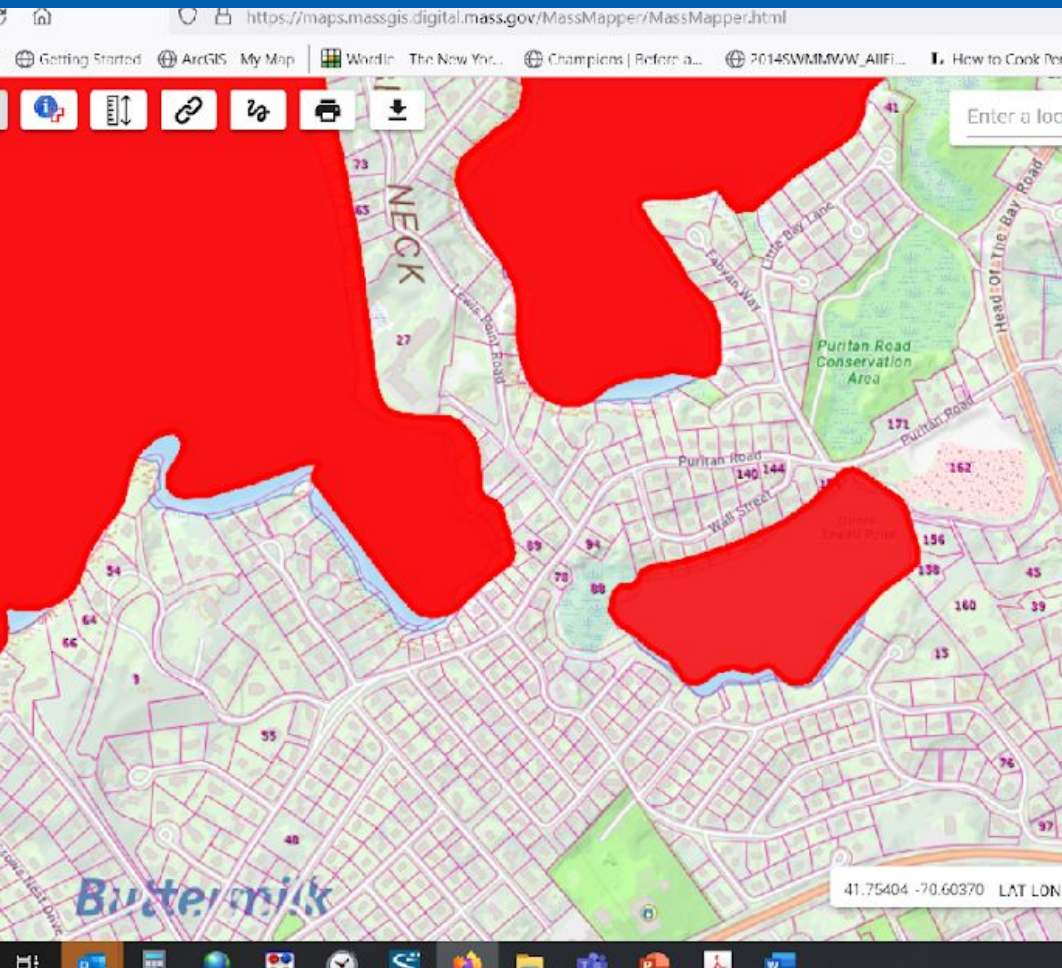


agenda



- Introductions
- Project Background
- Project Overview
- Public Input
- Next Steps

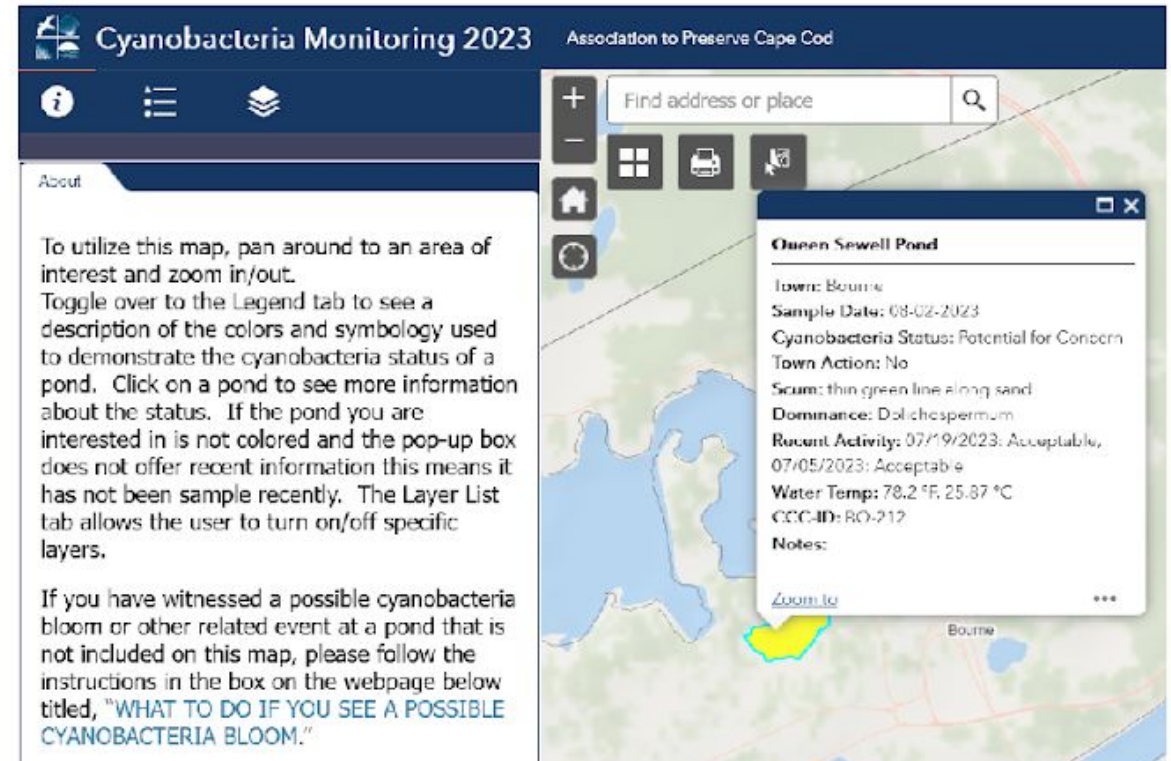
Project Background – Why Queen Sewell?



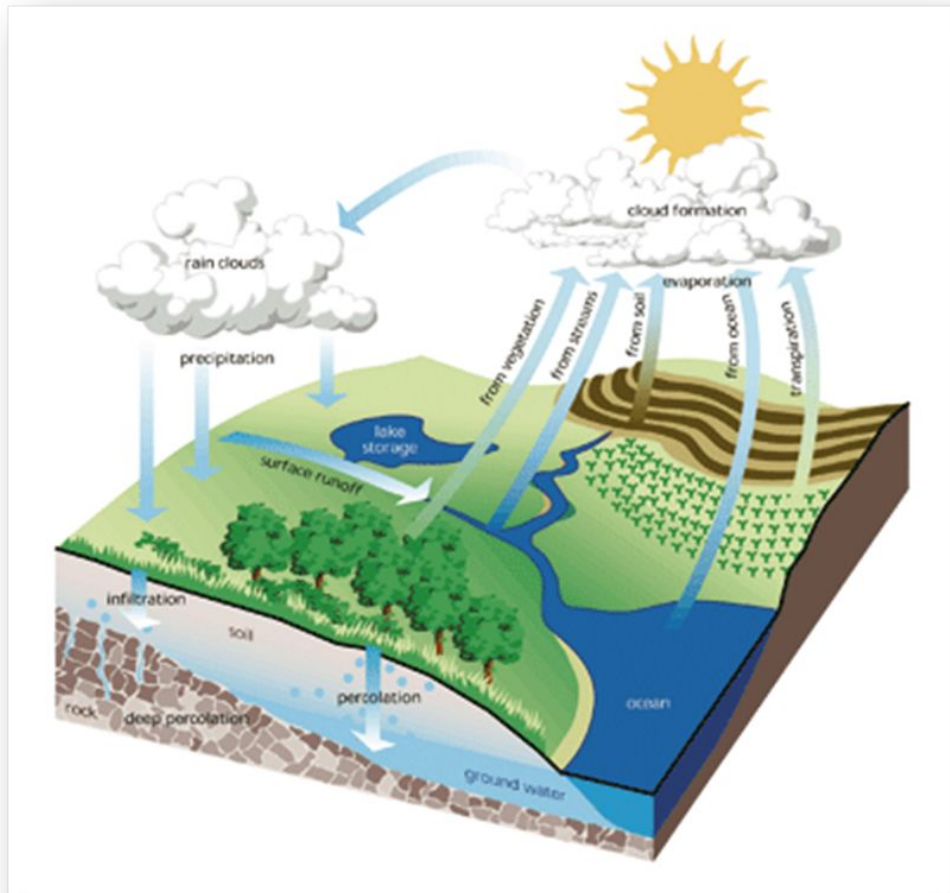
- Water quality issues
 - Harmful algae blooms
 - Excess nutrients

APCC's Cyanobacteria Monitoring Program

- <https://apcc.org/our-work/science/community-science/cyanobacteria/>



Project Background – What is a Watershed



What is a watershed?

A: a building for water storage

B: the land area that drains to a given water body

C: a shack from which fishing occurs

D: a moment in time when you cross into a new area

E: a new way of organizing environmental agencies

Project Background – Queen Sewell Pond Watershed



Queen Sewell Pond Watershed

- 150 acres
- Primarily single-family residential
- Stormwater infrastructure
- Septic systems
- Wetlands/former cranberry bogs

Project Overview



3 Phase Project

- Watershed Assessment
- Retrofit Construction Plans
- Public Outreach

Project Overview – Phase I: Watershed Assessment



Cape Cod Boat Ramps – Stormwater Retrofit Field Forms

Stormwater retrofit field forms were produced for all 20 sites during the field assessment for the Cape Cod Boat Ramp SRI Retrofit Project from data collected in the field on iPads as well as information collected and calculated in the office. The following is a summary of the information included on each form, organized by section.

SITE AND CONCEPT DESCRIPTION:
This section provides a brief description of the existing site conditions and proposed concepts. Specific information important for routing and/or design is included here, particularly information provided by the Project Team, residents or other stakeholders throughout the assessment process.
Existing BMP (S): Existing BMP refers to an actual SRI management practice, not just infrastructure.
Address for the site as well as a location map.

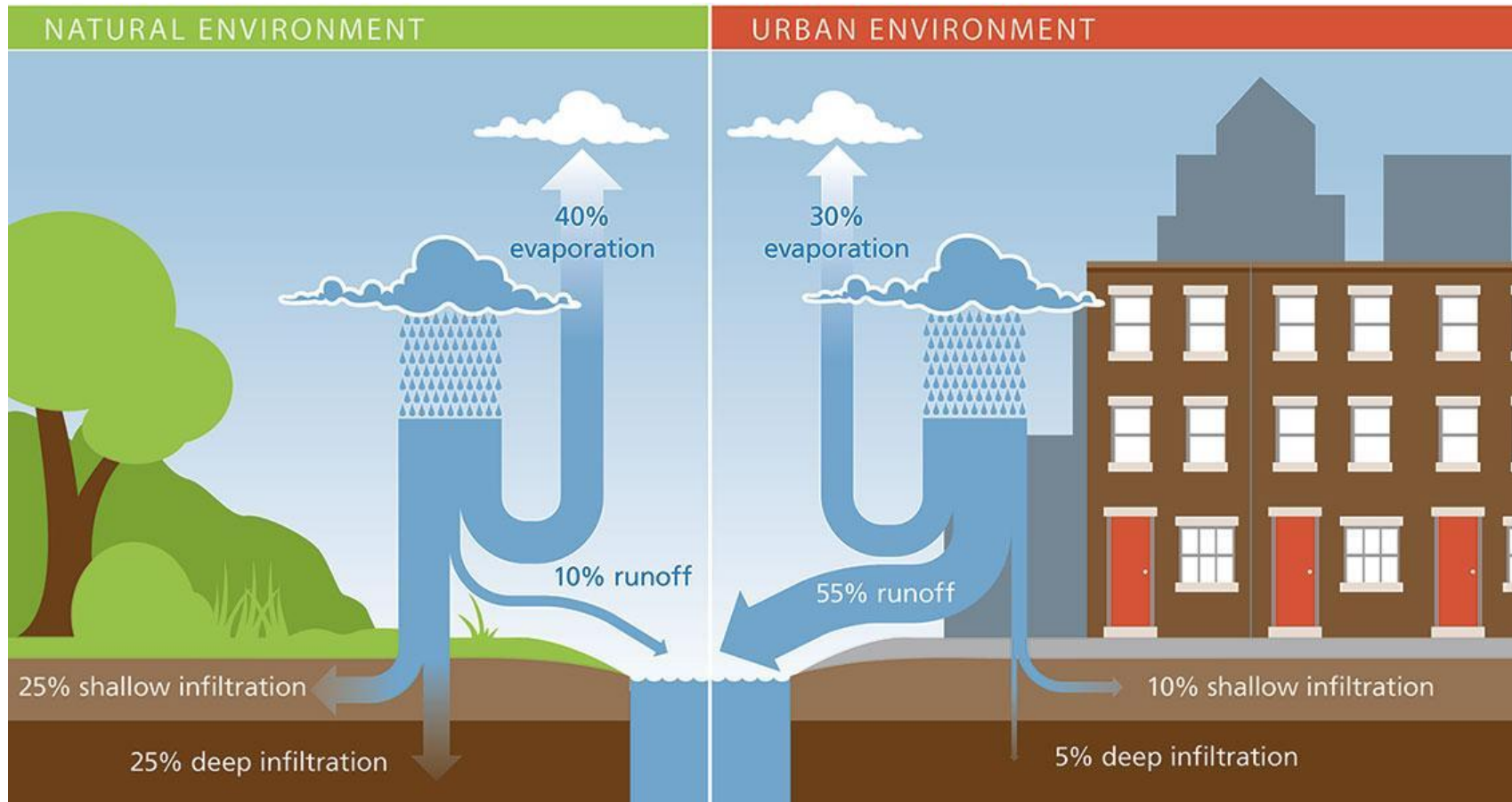
SITE LOCATION:
Address for the site as well as a location map.

GENERAL SITE INFORMATION:
This section provides general overview information about the site.
Site Contact(s): Contact(s) for site is included if known.
Ownership: Typically "Town" or "State" or "both", with more information included where known.
Parking Lot (Y/N): Indicates if parking lot is present along with a boat ramp.
Parking Spaces (N/A/T/D): Number of available parking spaces for vehicles only (V), vehicles with trailers (V/T), and handicapped spaces (H).
Surface (Impervious/Grass): Indicates whether the ramp and parking lot is paved (P) or unpaved (UP).
Existing Site Condition: Refers to existing condition at the site. Sites in poor condition to start with may be higher priority to upgrade to prevent further damage and pollutant loading.
Facilities/amenities: Facilities and/or amenities at or near the site, such as restrooms, picnic tables, etc.
Special Uses: Information on specific uses of boat parking area throughout the year if known (e.g., Fourth of July parade staging area, polar plunge, craft fair, etc.).
Receiving Water: Name and type (freshwater, or saltwater) of adjacent water body.
Known Impairment: Type of water quality impairment if known.
Adjacent Critical Resources: Lists whether the site is at or adjacent to a public beach, sensitive fish run, shellfishing area, or other critical resource.
Hazardous (Y/N): Hazardous sites with potentially higher pollutant loads, such as ramps with fueling stations, dumpsters, etc.
Observed Pollutants: This is a list of any pollutants actually observed at the site.
Invasive: Lists whether the site is expected to have good or poor infiltration based on soil survey (GIS).
El Community (Impervious/Grass/Impervious/Grass): Lists whether the site is within 1 mile of a mapped Environmental Justice (EJ) population based on mapped census (GIS) information.

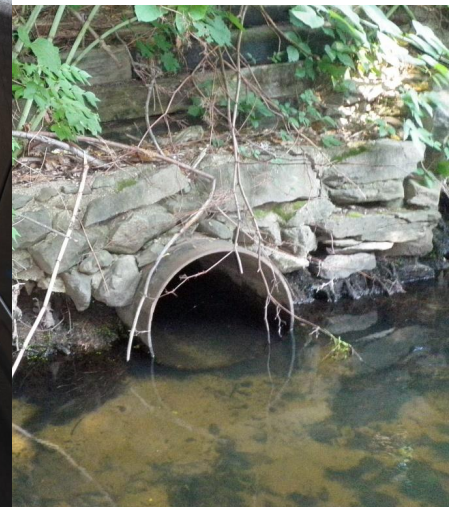
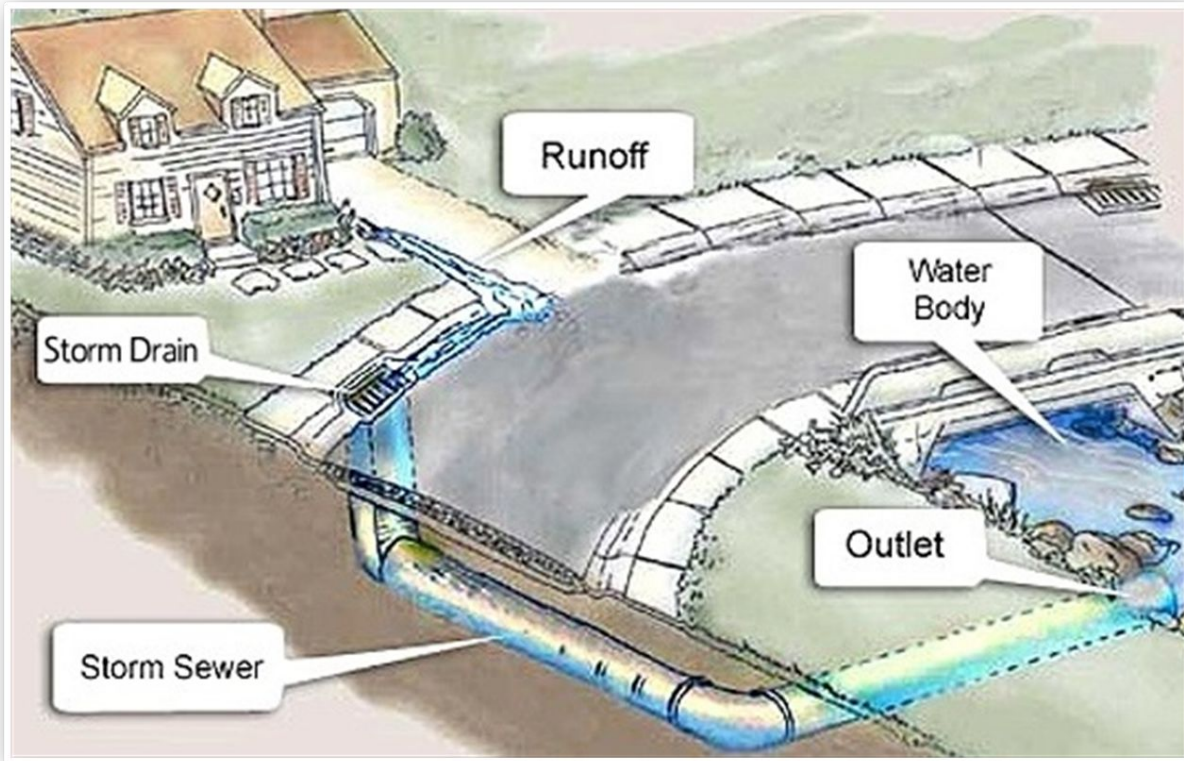
RETROFIT DETAILS:
Existing BMP Practice or Best Management Practice (BMP) to be implemented. Use checkmarks (✓) to indicate existing BMPs, and (X) to indicate proposed BMPs. Potential retrofit needs will be identified on the existing site map. Use proper site BMP Assessment Codes: L, R, S, T, U, V, W, X, Y, Z, AA, AB, AC, AD, AE, AF, AG, AH, AI, AJ, AK, AL, AM, AN, AO, AP, AQ, AR, AS, AT, AU, AV, AW, AX, AY, AZ, BA, BB, BC, BD, BE, BF, BG, BH, BI, BJ, BK, BL, BM, BN, BO, BP, BQ, BR, BS, BT, BU, BV, BW, BX, BY, BZ, CA, CB, CC, CD, CE, CF, CG, CH, CI, CJ, CK, CL, CM, CN, CO, CP, CQ, CR, CS, CT, CU, CV, CW, CX, CY, CZ, DA, DB, DC, DD, DE, DF, DG, DH, DI, DJ, DK, DL, DM, DN, DO, DP, DQ, DR, DS, DT, DU, DV, DW, DX, DY, DZ, EA, EB, EC, ED, EE, EF, EG, EH, EI, EJ, EK, EL, EM, EN, EO, EP, EQ, ER, ES, ET, EU, EV, EW, EX, EY, EZ, FA, FB, FC, FD, FE, FF, FG, FH, FI, FJ, FK, FL, FM, FN, FO, FP, FQ, FR, FS, FT, FU, FV, FW, FX, FY, FZ, GA, GB, GC, GD, GE, GF, GG, GH, GI, GJ, GK, GL, GM, GN, GO, GP, GQ, GR, GS, GT, GU, GV, GW, GX, GY, GZ, HA, HB, HC, HD, HE, HF, HG, HH, HI, HJ, HK, HL, HM, HN, HO, HP, HQ, HR, HS, HT, HU, HV, HW, HX, HY, HZ, IA, IB, IC, ID, IE, IF, IG, IH, II, IJ, IK, IL, IM, IN, IO, IP, IQ, IR, IS, IT, IU, IV, IW, IX, IY, IZ, JA, JB, JC, JD, JE, JF, JG, JH, JI, JJ, JK, JL, JM, JN, JO, JP, JQ, JR, JS, JT, JU, JV, JW, JX, JY, JZ, KA, KB, KC, KD, KE, KF, KG, KH, KI, KJ, KK, KL, KM, KN, KO, KP, KQ, KR, KS, KT, KU, KV, KW, KX, KY, KZ, LA, LB, LC, LD, LE, LF, LG, LH, LI, LJ, LK, LL, LM, LN, LO, LP, LQ, LR, LS, LT, LU, LV, LW, LX, LY, LZ, MA, MB, MC, MD, ME, MF, MG, MH, MI, MJ, MK, ML, MM, MN, MO, MP, MQ, MR, MS, MT, MU, MV, MW, MX, MY, MZ, NA, NB, NC, ND, NE, NF, NG, NH, NI, NJ, NK, NL, NM, NN, NO, NP, NQ, NR, NS, NT, NU, NV, NW, NX, NY, NZ, OA, OB, OC, OD, OE, OF, OG, OH, OI, OJ, OK, OL, OM, ON, OO, OP, OQ, OR, OS, OT, OU, OV, OW, OX, OY, OZ, PA, PB, PC, PD, PE, PF, PG, PH, PI, PJ, PK, PL, PM, PN, PO, PP, PQ, PR, PS, PT, PU, PV, PW, PX, PY, PZ, QA, QB, QC, QD, QE, QF, QG, QH, QI, QJ, QK, QL, QM, QN, QO, QP, QQ, QR, QS, QT, QU, QV, QW, QX, QY, QZ, RA, RB, RC, RD, RE, RF, RG, RH, RI, RJ, RK, RL, RM, RN, RO, RP, RQ, RR, RS, RT, RU, RV, RW, RX, RY, RZ, SA, SB, SC, SD, SE, SF, SG, SH, SI, SJ, SK, SL, SM, SN, SO, SP, SQ, SR, SS, ST, SU, SV, SW, SX, SY, SZ, TA, TB, TC, TD, TE, TF, TG, TH, TI, TJ, TK, TL, TM, TN, TO, TP, TQ, TR, TS, TT, TU, TV, TW, TX, TY, TZ, UA, UB, UC, UD, UE, UF, UG, UH, UI, UJ, UK, UL, UM, UN, UO, UP, UQ, UR, US, UT, UU, UV, UW, UX, UY, UZ, VA, VB, VC, VD, VE, VF, VG, VH, VI, VJ, VK, VL, VM, VN, VO, VP, VQ, VR, VS, VT, VU, VW, VX, VY, VZ, WA, WB, WC, WD, WE, WF, WG, WH, WI, WJ, WK, WL, WM, WN, WO, WP, WQ, WR, WS, WT, WU, WV, WW, WX, WY, WZ, XA, XB, XC, XD, XE, XF, XG, XH, XI, XJ, XK, XL, XM, XN, XO, XP, XQ, XR, XS, XT, XU, XV, XW, XX, XY, XZ, YA, YB, YC, YD, YE, YF, YG, YH, YI, YJ, YK, YL, YM, YN, YO, YP, YQ, YR, YS, YT, YU, YV, YW, YX, YY, YZ, ZA, ZB, ZC, ZD, ZE, ZF, ZG, ZH, ZI, ZJ, ZK, ZL, ZM, ZN, ZO, ZP, ZQ, ZR, ZS, ZT, ZU, ZV, ZW, ZX, ZY, ZZ.

- Collect data on Ipads
- Stormwater Retrofits
- Shoreline Stabilization
- Wetland/Bog Restoration
- Revegetation
- Wastewater Improvements
- Source Reductions
- Residential Stewardship

Project Overview – Stormwater 101



Project Overview – Stormwater 101



Project Overview – Green Infrastructure

Mimic Nature



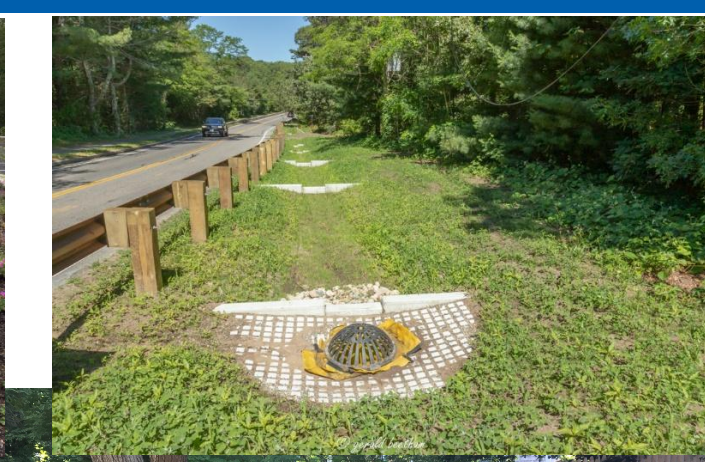
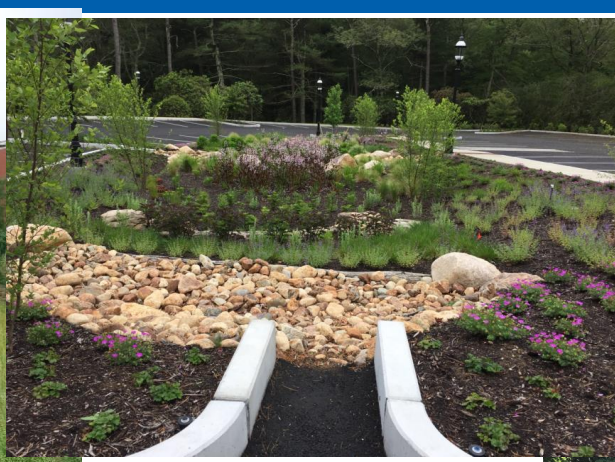
Structural Practices

- Infiltration
- Filters
- Wet Practices
- Rainwater Harvesting

Non-structural Practices

- Pavement Removal
- Revegetation
- Source Control
- Public Education

Project Overview – Green Infrastructure

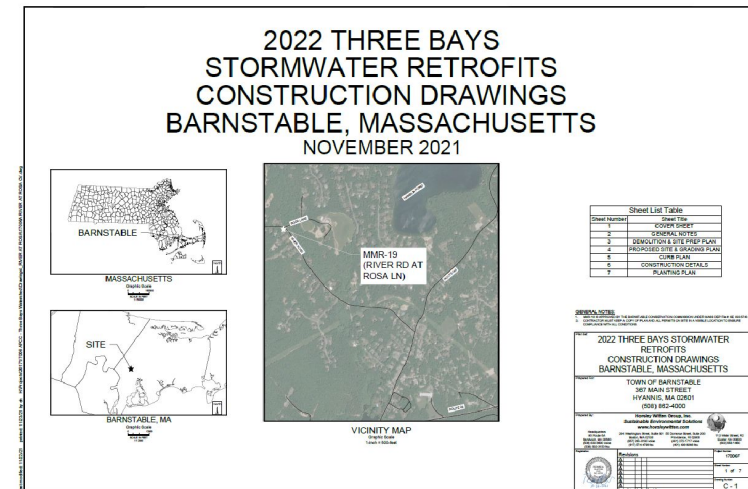


© gerald be

Project Overview – Phase II: Retrofit Construction Plans



- Design and Permit Green Infrastructure to retrofit the public beach parking lot
- Develop Construction Plans



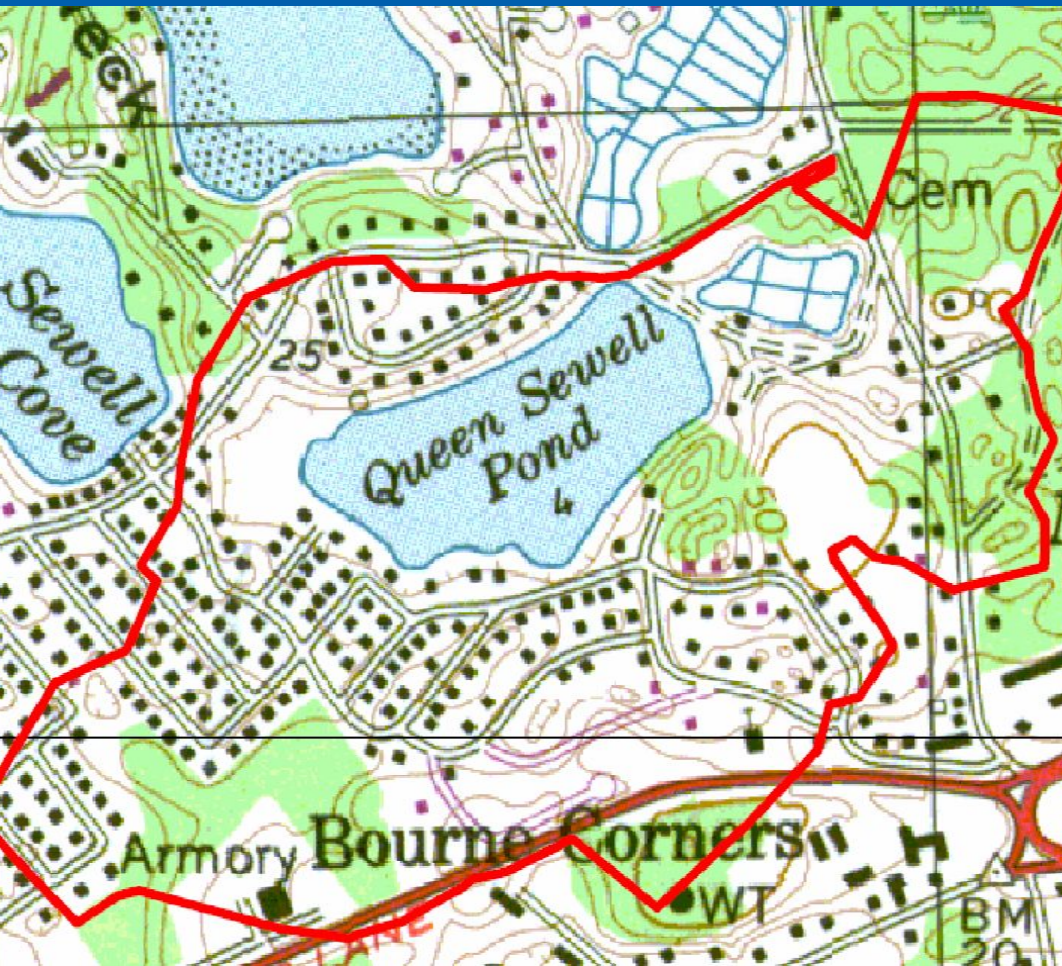
Project Overview – Phase III: Outreach



Three types of outreach

- Neighborhood Meetings
- DPW Maintenance Training
- Rain Garden Workshop

Public Input



We want to hear from
you!

Key Next Steps

September

Field crews performing **watershed assessment**

October

Field crews at beach site – survey, soils, and wetlands

January

Next **Neighborhood meetings** to update on progress/ findings

May

Watershed Action Plan finalized

June

Hands-on **rain garden workshop**

Questions

?

Thank You!

Contact Stevie Fitch

sfitch@townofbourne.com or visit our

website:

<https://www.townofbourne.com/conservati>

