

**PROJECT MINUTES**

Project:	Peebles Elementary School Feasibility Study	Project No.:	15041
Prepared by:	Joel Seeley	Meeting Date:	10/27/2016
Re:	School Building Committee Meeting	Meeting No:	28
Location:	Bourne Veteran’s Memorial Community Center	Time:	7:00pm
Distribution:	School Building Committee Members, Attendees (MF)		

Attendees:

PRESENT	NAME	AFFILIATION	VOTING MEMBER
✓	James L. Potter	Chairman, School Building Committee	<b>Voting Member</b>
✓	Peter J. Meier	Board of Selectmen	<b>Voting Member</b>
By phone	Christopher Hyldburg	Chairman, School Committee	<b>Voting Member</b>
✓	Natasha Scarpato	Member, School Committee	<b>Voting Member</b>
✓	Donna Buckley	Member at Large	<b>Voting Member</b>
	Richard A. Lavoie	Finance Committee	<b>Voting Member</b>
✓	William Meier	Building Trade Expert	<b>Voting Member</b>
		Member at Large	<b>Voting Member</b>
✓	Frederick H. Howe	Board of Health, Vice-Chairman School Building Committee	<b>Voting Member</b>
✓	Steven M. Lamarche	Superintendent of Schools, BPS	<b>Voting Member</b>
✓	Edward S. Donoghue	Director of Business Services, BPS	Non-Voting Member
	Thomas M. Guerino	Town Administrator	Non-Voting Member
		Local Official Responsible for Building Maintenance	Non-Voting Member
✓	Elizabeth A. Carpenito	Principal, BES	Non-Voting Member
✓	Kathy Anderson	Elementary/Special Education Secretary	Non-Voting Member
	Janey Norton	Principal, PES	
✓	Kent Kovacs	FAI, Architect	
	Betsy Farrell Garcia	FAI, Architect	
	Michael Cimorelli	FAI, Architect	
✓	Joel Seeley	SMMA, OPM	

Item #	Action	Discussion
28.1	Record	Call to Order, 7:00 PM, meeting opened.
28.2	Record	A motion was made by P. Meier and seconded by F. Howe to approve the 11/11/16 School Building Committee meeting minutes. No discussion, motion passed unanimous by those attending.
28.3	J. Seeley	J. Seeley indicated MSBA has asked SMMA to provide the reason the High School capacity study was undertaken in order for the MSBA to evaluate if they would consider the study a reimbursable expense.
28.4	P. Meier J. Potter	J. Potter and P. Meier to follow-up on the two open Committee memberships.
28.5	Record	J. Seeley provided an overview of the MSBA Project Scope and Budget meeting held on 10/17/16.  Committee Discussion: <ol style="list-style-type: none"> <li>1. J. Potter indicated it was a good meeting, MSBA staff will be recommending approval to the MSBA Board.</li> <li>2. S. Lamarche indicated the submission was very thorough and complete.</li> <li>3. P. Meier indicated the MSBA was very thorough in their review of the submission.</li> </ol>
28.6	Record	J. Potter provided an overview of the Special Town Meeting results.  Committee Discussion: <ol style="list-style-type: none"> <li>1. W. Meier indicated the results showed the Town equally supports both the Peebles project and Police project.</li> <li>2. J. Potter indicated there was a broad demographic cross section of the Town in attendance.</li> <li>3. S. Lamarche indicated there has been a perception that the attendees were comprised mostly of parents of school children, this is inaccurate, the attendees were broadly represented by all members of the Town.</li> </ol>
		COMMUNITY OUTREACH
28.7	J. Seeley	J. Seeley distributed and reviewed the updated Roadshow Schedule, dated 10/26/16 and attached. The Committee champions updated their meetings information and added additional outreach opportunities. J. Seeley to update the schedule and issue to the Committee.
28.8	K. Kovacs J. Seeley	The updated tri-fold Informational Flyer, dated 10/24/16, was reviewed. K. Kovacs to update and distribute to the Committee. J. Seeley to post on the Town website.
28.9	Record	J. Seeley distributed and reviewed the response document to the MSBA Schematic Design Submission comments, attached.
28.10	Record	K. Kovacs distributed and reviewed a draft of the high school capacity review, attached. The analysis indicates there are only five under-utilized classrooms in the school. These

---

Item #	Action	Discussion
		classrooms could not support relocating any grade or grades from another school to the high school.
28.11	Record	Old or New Business: None
28.12	Record	Next <b>SBC Meeting: November 14, 2016 at 6:30 pm</b> at the Bourne Veteran's Memorial Community Center.
28.13	Record	A Motion was made by S. Lamarche and seconded by P. Meier to adjourn the meeting. No discussion, voted unanimously.

Attachments: Agenda, Updated Roadshow Schedule, Updated Tri-Fold Flyer, Response to MSBA Schematic Design Submission Comments, Draft High School Capacity Review

The information herein reflects the understanding reached. Please contact the author if you have any questions or are not in agreement with these Project Minutes

**PROJECT MEETING SIGN-IN SHEET**

Project: Peebles Elementary School Feasibility Study Project No.: 15041  
 Prepared by: Joel Seeley Meeting Date: 10/27/2016  
 Re: School Building Committee Meeting Meeting No: 28  
 Location: Bourne High School Library/Media Center Time: 7:00pm  
 75 Waterhouse Road, Bourne, Massachusetts  
 Distribution: Attendees, (MF)

SIGNATURE	ATTENDEES	EMAIL	AFFILIATION
	James L. Potter	onsetjp@juno.com	Chairman, School Building Committee
	Peter J. Meier	pmeier@townofbourne.com	Bourne Board of Selectmen
	Christopher Hyldborg	chris@alpha-1.com	Chairman, Bourne School Committee
	Natasha Scarpato	scarpato4@comcast.net	Bourne School Committee
	Donna Buckley	d.j.buckley23@gmail.com	Member-At-Large
	Richard A. Lavoie	Richl.Lavoie@gmail.com	Member, Bourne Finance Committee
	William Meier	Dusty22752@aol.com	Building Trade Expert
			Member-At-Large
	Frederick H. Howe	rickhowe9@gmail.com	Member-At-Large, Board of Health
	Steven M. Lamarche	slamarche@bourneps.org	Superintendent of Schools, BPS
	Edward S. Donoghue	EDonoghue@bourneps.org	Director of Business Services, BPS, MCPPO
	Thomas M. Guerino	tguerino@townofbourne.com	Town Administrator
			Director of Facilities, Town of Bourne
	Elizabeth A. Carpenito	ecarpenito@bourneps.org	Principal, BES
	Kathy Anderson	kanderson@bourneps.org	Elementary/Special Education Secretary
	Janey Norton	jnorton@bourneps.org	Principal, PES
	Kent Kovacs	kkovacs@flansburgh.com	Flansburgh Architects
	Betsy Farrell Garcia	bgarcia@flansburgh.com	Flansburgh Architects
	Joel Seeley	jseeley@smma.com	SMMA

p:\2015\15041\04-meetings\4.3 mtg\_notes\3-school building committee\2016\28\_27october2016\schoolbuildingcommitteemeetingsign-in sheet\_27october2016.docx

**AGENDA**

Project:	Peebles Elementary School Feasibility Study	Project No.:	15041
Re:	School Building Committee Meeting	Meeting Date:	10/27/2016
Meeting Location:	Bourne High School Library	Meeting Time:	7:00 PM
Prepared by:	Joel Seeley	Meeting No.:	28
Distribution:	Committee Members (MF)		

---

1. Call to Order
2. Approval of Minutes
3. Approval of Invoices and Commitments
4. Review Special Town Meeting Results
5. Preparation for Ballot Vote
6. High School Capacity Review
7. Old or New Business
8. Public Comments
9. Next Meeting: Potential Meeting Dates: TBD - November 3, November 10, November 17, December 1, 2016
10. Adjourn



Venue	Location	Date	Time	SBC Champion	SBC Attendees	Venue Contact	Presentation	Notes
Selectmen	Community Center	Tuesday, August 23, 2016	7:00PM	Jim Potter			Yes	Complete
Capital Outlay	Community Center	Wednesday, September 14, 2016	8:30AM	Jim Potter	?		Yes	Complete
Finance Committee	Community Center	Monday, September 19, 2016	7:00PM	Rich Lavoie	RH,		Yes	Complete
School Committee	BHS Media Center	Wednesday, October 5, 2016	6:30PM	Steve Lamarche	RH,		Yes	SMMA can not attend
School Committee	Peebles School	Wednesday, November 9, 2016	6:30 PM	Steve Lamarche			No	Tour Peebles School before meeting
Peebles ES Open House	Peebles ES	Thursday, August 25, 2016	4:00 PM	Janey Norton	?	Janey Norton	No, handouts only	Complete
Bourne ES Open House	Bourne ES	Thursday, August 25, 2016	4:00 PM	Liz Carpenito	?	Liz Carpenito	No, handouts only	Complete
Middle School Back to School Night	Middle School	Thursday, September 8, 2016	5:30 PM	Kathy Anderson	NS, KA	Melissa Ryan	No, handouts only	Complete
BATV Interview	BATV	Thursday, September 15, 2016	2:00 PM	Joel Seeley	SL, CH, NS	Jenn McGrail		Complete
Peebles ES Back to School Night	Peebles ES	Thursday, September 15, 2016	5:30 PM	Janey Norton	KA,	Janey Norton	No, handouts only	Complete
Community Forum No. 9	Peebles ES	Tuesday, September 20, 2016	6:00PM	Jim Potter	RH,	Janey Norton	Yes	Complete
Bourne ES Back to School Night	Bourne ES	Thursday, September 22, 2016	5:30 PM	Liz Carpenito	KA,	Liz Carpenito	No, handouts only	Complete
High School Teachers Conference	High School	Thursday, October 6, 2016	4:00 PM	Steve Lamarche	KA,	Amy Cetner	No, handouts only	Complete
Bourne PTA	Peebles ES	Tuesday, September 20, 2016	6:00PM	Steve Lamarche	?	?	Yes	Complete
Rotary Club of Bourne/Sandwich	Upper Cape Cod Technical School	Thursday, September 8, 2016	7:40 AM	Chris Hyldburg	CH, PM, SL	Bob Dutch	Yes	Complete
Pocasset Village Association	Pocasset Community Center	Saturday, September 10, 2016	9:30AM	Liz Carpenito	RH,	?	Yes	Complete
Cataumet Civic Association	?	?	?	Liz Carpenito	RH,	?	?	No annual meeting, invited to Community Tour
Sagamore Highlands Association	?	?	?	Liz Carpenito	RH,	?	?	No annual meeting, invited to Community Tour
Council on Aging	Community Center	Thursday, October 6, 2016	2:00 PM	Peter Meier	RH?	?	Yes	Complete
Peebles Community Tour	Peebles ES	Saturday, September 24, 2016	1:00 PM	Janey Norton	?	Janey Norton	No	Complete
Republican Town Committee	?	Monday, October 3, 2016	?	Jim Potter	?	?	No	Complete
Community Center	Community Center	Wednesday, September 28, 2016	10:00 AM	Steve Lamarche	?	?	No	Complete
Peebles Community Tour	Peebles ES	Saturday, October 15, 2016	1:00 PM	Janey Norton			No	Complete
Town Meeting	BHS	Monday, October 17, 2016	7:00 PM	Jim Potter	?	?	Yes	Complete
Bourne Public Library	?	?	?	Steve Lamarche	?	?	?	Need date/time
Men's Breakfast	?	?	?	Peter Meier	?	?	?	Need date/time
Ballot Vote		Tuesday, December 6, 2016						

## Frequently Asked Questions

### Q Why a grade 3-5 Peebles Elementary School?

**A** This option replaces the existing Peebles School with a new facility serving a single intermediate school for students in grades 3 through 5, keeping an elementary school on the Cape side of the canal as part of greater campus with the middle and high school. It relocates the fifth grade into an elementary school setting and provides new educational opportunities at Bourne Middle School. This option creates an equal educational experience among the elementary schools with a focused 3-5 educational program for all students through a more, streamlined curriculum with greater academic resources and additional collaboration opportunities within the school community including the unique opportunity for fifth grade students to take on leadership roles.

### Q Why should the 5th grade be returned to the elementary school?

**A** Moving the fifth grade to the 3-5 school further eases student transition to middle school as students will have already integrated as a class and experienced the transition from the elementary school to the intermediate (3-5) school. Fifth grade students will take the school bus with students in their own age groups that will reduce exposure to behaviors of older students. Additionally, much of our curriculum matches the grade bands PK-2, 3-5 (or PreK-5) and 6-8 evident in the Massachusetts State Curriculum Frameworks

### Q How long has the Feasibility Study been underway?

**A** The Feasibility Study commenced over 4 years ago in January 2012 with the submission of the Statement of Interest for the Peebles Elementary School to the Massachusetts School Building Authority (MSBA) by the Selectmen and School Committee. The Town and the MSBA executed an agreement for the Feasibility Study in February 2015 which has been overseen by the School Building Committee for the past 1 ½ years

**For more information go to:**

### Town Website:

<http://www.townofbourne.com/school-building-committee>

[www.newpeebles.weebly.com](http://www.newpeebles.weebly.com)

**Project Email:** [sbc@townofbourne.com](mailto:sbc@townofbourne.com)

### Q Why not renovate instead?

**A** The Feasibility Study demonstrated that requirements for meeting the building code and the requirements for reimbursement of the Massachusetts School Building Authority (MSBA) would make a renovation/addition more costly than new construction due to the age and condition of the 62+ year old Peebles Elementary School.

### Q Will it be longer to travel to school?

**A** There will be approximately 15 additional minutes to the current bus route duration for first and second graders that reside on the cape-side of the Canal and for third and fourth graders that reside off-cape.

### Q What are the benefits of grade spans?

**A** While this is a shift from the current school configurations, there are potential benefits for all stakeholders of the Bourne Public Schools system. This option provides district-wide PK-2 at Bournedale, 3-5 at Peebles and 6-8 at BMS. By creating small grade span schools, each school is able to focus on one specific stage of child academic and social/emotional development. A building-wide concentration of attention to the academic, emotional, physical, and social needs associated with each level of students will positively enhance learning and growth.

### Q Why not delay until the economy improves?

**A** The School District has been approved by the State for reimbursement now at 48.63% of eligible costs. Additionally, the MSBA is reimbursing the Town for 43.84% (\$328,800) of the \$750,000 cost of the feasibility study. If the project is delayed it will be removed from the State funding list with no assurance for any reimbursement in the future. If the MSBA were ever to reconsider a Peebles Elementary School project in the future, another feasibility study would be required and the Town would be responsible for paying for the study in totality with no reimbursement.

### Q Is this the right time to build?

**A** Due to a slowly improving economy, borrowing costs are still at historic lows and, due to a very competitive building climate, construction costs remain low. These costs, however, are currently on the rise and a delay will increase project costs.

## Fact Sheet

The Proposed New

# Peebles Elementary School

Bourne, MA

October 24 , 2016



### PROJECT UPDATE!!

**Town meeting voted to approve the Peebles Elementary School Project at the October 17th, 2016 Special Town Meeting**

The new, proposed state-approved 3-5 school will be a modern, state-of-the-art facility that will serve the Town for many years to come and features amenities such as....

- Larger classrooms, new learning commons, and gymnasium that conform to current State guidelines.
- Dedicated art, music, innovation studio, special education, and all other required educational spaces.
- Convenient community access and use of the gymnasium, cafeteria, and learning commons.
- Improved student safety: new building security system, access control system, fire alarm, and fire suppression system.
- 21st Century technology infrastructure.
- Numerous "green" features that will improve operational efficiency of the school such as occupancy sensors for lighting, an energy efficient displacement air system, and a building-wide energy management system.

*Building for the Future*

## Deficiencies

The Peebles Elementary School is an aged facility requiring significant upkeep without long term educational benefits. There is a lack of educational spaces and many existing spaces do not conform to current State guidelines or meet 21st Century educational needs.

Bourne Residents voted to approve this Feasibility Study and seek a Grant from MSBA to mitigate these conditions at the October 27, 2014 Special Town Meeting.

- The antiquated facility impedes teaching and learning.
- Music, art and general classrooms have inadequate spaces and equipment for the specialized programs taught. Many special education spaces are also too small.
- The core facilities (library, gym, and cafeteria) are undersized and require updates to ventilation air system
- The schools lack a modern security system, access control system, fire alarm, and fire suppression system.
- All of the old building systems (mechanical, electrical, and plumbing) are outdated, unreliable, inefficient, and have outlived their useful life. These systems now require constant repair and attention.
- Parking on the sites is limited and disorganized. The parent drop off and bus areas create an unsafe congested condition during pick up and drop off times.



## Solution

The Peebles Elementary School is nearing the end of its educational and functional life. As a result of eighteen months of deliberating and planning with the Bourne community and Massachusetts School Building Authority, a vision emerged for the community of Bourne in its entirety, not just Bourne Public Schools. We are excited to present you a building that addresses community needs, as well as, a new vision for educating PreK-12 with grade span re-configuration enhancing the social, emotional and developmental needs of all children. In 2020, we will have the opportunity to strengthen our Bourne community by creating one common educational experience.

- Working with the Town and the Massachusetts School Building Authority (MSBA), the design team developed nine different options ranging from phased renovation of the existing Peebles ES and Bournedale ES schools to a completely new building.
- The best long-term solution converts Bournedale to a District-wide PK-2, constructs a new 72,680-sf, two-story building for District-wide grades 3-5 students, and returns the 5th grade to an elementary setting.
- New construction avoids the disruption to students inherent with a multi-phased renovation project
- The total project cost is \$39.91 million and the State will reimburse the Town approximately \$15.15 million. The estimated project cost to the Town of Bourne is \$24.76 million.
- The tax impact will be approximately \$0.40/\$1,000 of assessed residential value. On an average home assessed at \$398,944 that is \$163/year.



## Site Plan

The proposed new building will be located in front of the existing school and includes many new site amenities.

### KEY:

- 1 New Peebles Elementary School
- 2 New Tennis Courts
- 3 Middle School
- 4 High School



- Increased parking spaces and a safer traffic flow with separate parent and bus loading zones.
- A new enclosed play area with new play equipment
- New tennis courts with associated parking
- Improved handicapped accessibility

Project Schedule	Project Schedule	
<input checked="" type="checkbox"/>	Sept. 20, 2016	Community Forum No.9
<input checked="" type="checkbox"/>	Oct. 17, 2016	Special Town Meeting
<input type="checkbox"/>	Nov. 04, 2016	MSBA Board Meeting
<input type="checkbox"/>	Dec. 06, 2016	Special Ballot Vote
<input type="checkbox"/>	Dec. 07, 2016	Commence Design Drawings
<input type="checkbox"/>	October 2017	Commence Bidding
<input type="checkbox"/>	November 2017	Commence Construction
<input type="checkbox"/>	August 2019	Open New Peebles School

*“One community, one common educational experience.”*



October 24, 2016

Ms. Kathryn DeCristofaro  
Capital Program Manager  
Massachusetts School Building Authority  
40 Broad Street  
Boston, Massachusetts 02109

**Re: Peebles Elementary School**

**Bourne, Massachusetts**

*District's Responses to the Schematic Design Submission  
Review Comments*

*SMMA No. 15041*

Dear Kathryn:

Please find the District's Responses to the MSBA's Schematic Design Submission Review Comments of October 17, 2016.

Very truly yours,

**SMMA | Symmes Maini & McKee Associates**



Joel G. Seeley  
Project Director

cc: James Potter, SBC Chair (MF)

enclosures: District's Response to the Schematic Design Submission Review Comments

JGS/sat /P:\2015\15041\05-  
TRANS\L\_Kdecristofaro\_Di  
strict'sResponsestoSDSub  
missionReviewComments\_  
24October2016.Docx

1000 Massachusetts Avenue  
Cambridge, MA 02138  
617.547.5400

[www.smma.com](http://www.smma.com)

**October 21, 2016**

**District Responses to the Schematic Design Review Comments**

**MODULE 4 – SCHEMATIC DESIGN REVIEW COMMENTS**

**District:** Town of Bourne

**School:** James F. Peebles Elementary School

**Owner’s Project Manager:** Symmes Maini & McKee Associates

**Designer:** Flansburgh Architects

**Submittal Due Date:** September 29, 2016

**Submittal Received Date:** September 29, 2016

**Review Date:** October 4-12, 2016

**Reviewed by:** C. Forde, C. Alles, J. Jumpe

---

**MSBA Review Comments:**

**4.1.2 SCHEMATIC DESIGN BINDER**

**Geotechnical and Geo-environmental Analysis**

5) *The submittal indicates that borings were taken at the proposed location of the new building and the narrative states that the site is adequate for normal concrete footings. However, recommendations were not found in the report provided by Geotechnical Services Inc. as part of this submittal. Please provide as part of the Districts response to MSBA’s SD Review Comments.*

**Response:** The supplemental subsurface data collected for this report show similar soil characteristics to those presented in the Geotechnical Investigation Report, dated November 17, 2015 (Revised December 17, 2015). Accordingly, the geotechnical design recommendations for the foundation system presented in the November 17 report remain valid for reinforced concrete spread and strip footings and slab on grade construction.

Attached is the revised report with the summary statement noted above.

**Sustainable Building Design Guideline Documents**

10) *The submittal indicates that the District is attempting to achieve 2 additional incentive points for sustainability. However, a LEED 2009 scorecard was included as part of this submission. As a result of MSBA’s Project Advisory 30 – Update to MSBA’s Sustainable Building Design Policy requires that LEED Version 4 criteria be used. Please submit a LEED version 4 scorecard as part of the Districts response to MSBA’s SD Review Comments.*

**Response:** Refer to attached LEED version 4 scorecard

**4.1.3 SCHEMATIC DESIGN PROJECT MANUAL**

**MSBA Review Comments:**

2) *Please provide the information listed above regarding proprietary items (if any). If no proprietary items are anticipated, please acknowledge accordingly as part of the District’s response to MSBA’s SD Review Comments.*

**Response:** There are no proprietary items anticipated for this project.

#### **4.1.4 SCHEMATIC DESIGN DRAWINGS**

##### **MSBA Review Comments:**

*1) Please provide the existing site plan as part of the District's response to MSBA's SD Review Comments.*

**Response:** Refer to attached Existing Site Plan

# ***GEOTECHNICAL DATA REPORT***

**PEEBLES ELEMENTARY SCHOOL  
70 TROWBRIDGE ROAD  
BUZZARDS BAY, MASSACHUSETTS**

August 25, 2016  
(Revised October 21, 2016)

**GSI Project No. 215256**

***Prepared for:***

Mr. Kent Kovacs  
Flansburgh Architects, Inc.  
77 North Washington Street  
Boston, Massachusetts 02114-1910

***Prepared by:***

Geotechnical Services, Inc.  
55 North Stark Highway  
Weare, NH 03281

**Geotechnical Services Inc.**

Geotechnical Engineering ▴ Environmental Studies ▴ Materials Testing ▴ Construction Monitoring





# GEOTECHNICAL SERVICES INC.

▲ Geotechnical Engineering ▲ Environmental Studies ▲ Materials Testing ▲ Construction Monitoring ▲

August 25, 2016  
(Revised: October 21, 2016)

Mr. Kent Kovacs  
Flansburgh Architects, Inc.  
77 North Washington Street  
Boston, Massachusetts 02114-1910

Advanced copy via email: [kkovacs@flansburgh.com](mailto:kkovacs@flansburgh.com)

**Re: Geotechnical Data Report  
Pebbles Elementary School  
Buzzards Bay, MA  
GSI Project No. 215256**

Dear Mr. Kovacs:

Geotechnical Services, Inc. (GSI) is pleased to submit this geotechnical data report for the subject project site. This report includes a summary of soil, rock and groundwater conditions of the site through the implementation of a supplemental subsurface exploration program consisting of test borings. The subsurface data presented in this report supplements the data provided in the reports titled: **“Geotechnical Investigation Report, Pebbles Elementary School, Buzzards Bay, MA,”** prepared by GSI for Flansburgh Architects, Inc., dated November 17, 2016 (Revised December 17, 2015). The content of this report is subject to the **Limitations** stated in Appendix A.

## SUBSURFACE INVESTIGATION

The project site is located at the Pebbles Elementary School at 70 Trowbridge Road in Buzzards Bay, MA (See Figure 1, Project Locust). Four test borings, identified as borings B-101 to B-104, were drilled at the site on August 17, 2016 by New England Boring Contractors located in Brockton, Massachusetts under full-time supervision by a GSI engineer. The borings were drilled using a truck-mounted drill rig (Mobile Drill B-48) using 2.25-in. I.D. hollow stem augers to advance the boreholes. The borings were drilled to depths ranging from approximately 16-ft to 26-ft below the existing grade. The locations of the test borings are shown on Figure 2, Exploration Location Plan.

Standard Penetration Tests (SPTs) were performed and split-spoon soil samples were retrieved (ASTM D 1586) generally at the ground surface and subsequently at 5-ft intervals. Each soil sample, upon recovery, was observed by the GSI engineer and classified in accordance with the Burmister Classification system. Representative portions of each sample retrieved were saved in glass jars with identification, and delivered to the GSI Soils Laboratory. The samples were re-examined and field classifications were reviewed. The finalized logs for the test borings are included in Appendix B. The soil samples will be stored at the GSI laboratory during the course of the project design-development, and will be shipped to your designated address or discarded upon your notification.

## SUBSURFACE CONDITIONS

The subsurface conditions encountered in the investigation indicate that the site is underlain by the following soil units/deposits, described in order of increasing depth:

**Topsoil (Surface Deposits):** Topsoil was encountered in test borings B-101 and B-103. The thickness of the topsoil encountered varies from about 3-in. (B-103) to 10-in (B-101).

**Pavement:** A 1.5-in. thick layer of pavement was encountered at the ground surface boring B-104.

**Fill:** Fill soils were encountered in boring B-102 from the ground surface to about 6-ft below grade. The Fill soils generally consist of medium dense to dense, brown, fine to medium SAND with varying amounts of gravel and coarse sand. Trace amounts of asphalt were observed. The Fill soils appear to be reworked Sand Deposits.

**Sand Deposits:** The naturally deposited Sand Deposits were encountered in all the borings. The Sand Deposits generally consist of medium dense to dense, brown, **fine SAND** to a **fine to medium SAND** with varying amounts

of gravel, coarse sand and silt. The drill action during borehole advancement indicated nested **cobbles** within the Sand Deposit Layer. In addition, very **large boulders** were observed in the vicinity of boring B-104 and along the hillside in an area just south of the paved area behind the existing school. The Sand Deposits were encountered to the termination depths of the test borings ranging from 16 to 26-ft below the existing grade. Boring B-102 was terminated at 16-ft below the existing grade due to refusal on a probable boulder.

### **Groundwater Conditions**

An attempt to measure the groundwater levels within each borehole upon completion of each borehole. No groundwater was encountered. Groundwater levels should be expected to fluctuate with season, precipitation, snowmelt, construction activities, and other factors. As a result, groundwater levels encountered during construction may differ from those encountered during the exploration. Localized areas of perched groundwater over bedrock should be anticipated.

It should be noted that the region is currently experiencing drought conditions which may impact groundwater levels.

### **SUMMARY**

The supplemental subsurface data collected for this report show similar soil characteristics to those presented in the Geotechnical Investigation Report, dated November 17, 2015 (Revised December 17, 2015). Accordingly, the geotechnical design recommendations for the foundation system presented in the November 17 report remain valid for reinforced concrete spread and strip footings and slab on grade construction.

### **CLOSURE**

GSI appreciates the opportunity for participating in this project, and looks forward to our continuing association during its subsequent phases towards its successful completion. In the mean time, please do not hesitate to contact us, if you have any questions on the content of this report.

Very truly yours,

### **GEOTECHNICAL SERVICES, INC.**

  
Glen V. Zoladz, P.E.  
*Project Manager*

Harry K. Wetherbee, P.E.  
*Principal Engineer*

- Figure 1. Project Locus
- Figure 2. Exploration Location Plan
  
- Appendix A Limitations
- Appendix B Test Boring Logs





**LEED v4 for BD+C: Schools**  
Project Checklist

Project Name: Peebles Elementary  
Date: October 18, 2016

Y ? N

1			Credit	Integrative Process	1
---	--	--	--------	---------------------	---

9	2	4	Location and Transportation		15
		0	Credit	LEED for Neighborhood Development Location	15
1			Credit	Sensitive Land Protection	1
2			Credit	High Priority Site	2
2	1	2	Credit	Surrounding Density and Diverse Uses	5
2		2	Credit	Access to Quality Transit	4
1			Credit	Bicycle Facilities	1
1			Credit	Reduced Parking Footprint	1
	1		Credit	Green Vehicles	1

7	2	3	Sustainable Sites		12
Y			Prereq	Construction Activity Pollution Prevention	Required
Y			Prereq	Environmental Site Assessment	Required
1			Credit	Site Assessment	1
		2	Credit	Site Development - Protect or Restore Habitat	2
1			Credit	Open Space	1
1	1	1	Credit	Rainwater Management	3
2			Credit	Heat Island Reduction	2
1			Credit	Light Pollution Reduction	1
	1		Credit	Site Master Plan	1
1			Credit	Joint Use of Facilities	1

6	1	5	Water Efficiency		12
Y			Prereq	Outdoor Water Use Reduction	Required
Y			Prereq	Indoor Water Use Reduction	Required
Y			Prereq	Building-Level Water Metering	Required
2			Credit	Outdoor Water Use Reduction	2
3	1	3	Credit	Indoor Water Use Reduction	7
		2	Credit	Cooling Tower Water Use	2
1			Credit	Water Metering	1

11	5	##	Energy and Atmosphere		31
Y			Prereq	Fundamental Commissioning and Verification	Required
Y			Prereq	Minimum Energy Performance	Required
Y			Prereq	Building-Level Energy Metering	Required
Y			Prereq	Fundamental Refrigerant Management	Required
5		1	Credit	Enhanced Commissioning	6
5	2	9	Credit	Optimize Energy Performance	16
		1	Credit	Advanced Energy Metering	1
	2		Credit	Demand Response	2
		3	Credit	Renewable Energy Production	3
		1	Credit	Enhanced Refrigerant Management	1
1	1		Credit	Green Power and Carbon Offsets	2

4	4	5	Materials and Resources		13
Y			Prereq	Storage and Collection of Recyclables	Required
Y			Prereq	Construction and Demolition Waste Management Planning	Required
	3	2	Credit	Building Life-Cycle Impact Reduction	5
1		1	Credit	Building Product Disclosure and Optimization - Environmental Product Declarations	2
	1	1	Credit	Building Product Disclosure and Optimization - Sourcing of Raw Materials	2
1		1	Credit	Building Product Disclosure and Optimization - Material Ingredients	2
2			Credit	Construction and Demolition Waste Management	2

8	1	7	Indoor Environmental Quality		16
Y			Prereq	Minimum Indoor Air Quality Performance	Required
Y			Prereq	Environmental Tobacco Smoke Control	Required
Y			Prereq	Minimum Acoustic Performance	Required
1		1	Credit	Enhanced Indoor Air Quality Strategies	2
3			Credit	Low-Emitting Materials	3
1			Credit	Construction Indoor Air Quality Management Plan	1
	1	1	Credit	Indoor Air Quality Assessment	2
		1	Credit	Thermal Comfort	1
2			Credit	Interior Lighting	2
		3	Credit	Daylight	3
1			Credit	Quality Views	1
		1	Credit	Acoustic Performance	1

4	1	1	Innovation		6
3	1	1	Credit	Innovation	5
1			Credit	LEED Accredited Professional	1

1	2	1	Regional Priority		4
1			Credit	Regional Priority: Outdoor Water Use	1
	1		Credit	Regional Priority: Rainwater Management	1
		1	Credit	Regional Priority: Indoor Water Use	1
		1	Credit	Regional Priority: Specific Credit	1

**51 18 41 TOTALS** Possible Points: **110**

Certified: 40 to 49 points, Silver: 50 to 59 points, Gold: 60 to 79 points, Platinum: 80 to 110

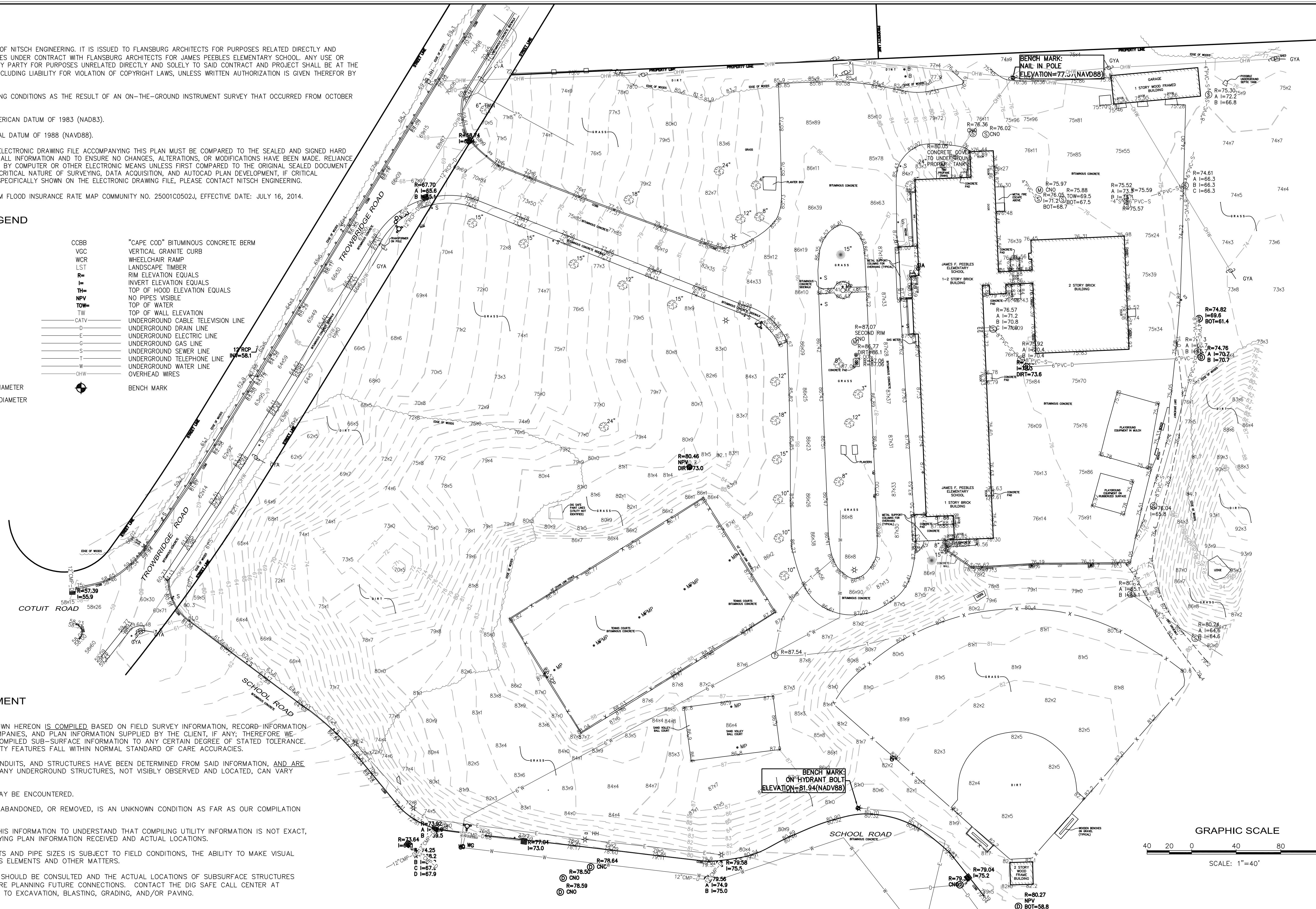
12/15/2015 11:31 AM  
C:\11078.1\james.peebles\dwg\11078.1\_topo1.dwg

**NOTES**

- 1.) THIS DOCUMENT IS AN INSTRUMENT OF SERVICE OF NITSCH ENGINEERING. IT IS ISSUED TO FLANSBURGH ARCHITECTS FOR PURPOSES RELATED DIRECTLY AND SOLELY TO NITSCH ENGINEERING'S SCOPE OF SERVICES UNDER CONTRACT WITH FLANSBURGH ARCHITECTS FOR JAMES PEEBLES ELEMENTARY SCHOOL. ANY USE OR REUSE OF THIS DOCUMENT FOR ANY REASON BY ANY PARTY FOR PURPOSES UNRELATED DIRECTLY AND SOLELY TO SAID CONTRACT AND PROJECT SHALL BE AT THE USER'S SOLE AND EXCLUSIVE RISK AND LIABILITY, INCLUDING LIABILITY FOR VIOLATION OF COPYRIGHT LAWS, UNLESS WRITTEN AUTHORIZATION IS GIVEN THEREFOR BY NITSCH ENGINEERING.
- 2.) THE PURPOSE OF THIS PLAN IS TO SHOW EXISTING CONDITIONS AS THE RESULT OF AN ON-THE-GROUND INSTRUMENT SURVEY THAT OCCURRED FROM OCTOBER 30 TO NOVEMBER 6, 2015.
- 3.) HORIZONTAL COORDINATES REFER TO NORTH AMERICAN DATUM OF 1983 (NAD83).
- 4.) ELEVATION REFERS TO NORTH AMERICAN VERTICAL DATUM OF 1988 (NAVD88).
- 5.) THE INFORMATION CONTAINED ON THE DISK OR ELECTRONIC DRAWING FILE ACCOMPANYING THIS PLAN MUST BE COMPARED TO THE SEALED AND SIGNED HARD COPY OF THE PLAN TO ENSURE THE ACCURACY OF ALL INFORMATION AND TO ENSURE NO CHANGES, ALTERATIONS, OR MODIFICATIONS HAVE BEEN MADE. RELIANCE SHALL NOT BE MADE ON A DOCUMENT TRANSMITTED BY COMPUTER OR OTHER ELECTRONIC MEANS UNLESS FIRST COMPARED TO THE ORIGINAL SEALED DOCUMENT ISSUED AT THE TIME OF THE SURVEY. DUE TO THE CRITICAL NATURE OF SURVEYING, DATA ACQUISITION, AND AUTOCAD PLAN DEVELOPMENT, IF CRITICAL DIMENSIONAL INFORMATION IS NEEDED AND IS NOT SPECIFICALLY SHOWN ON THE ELECTRONIC DRAWING FILE, PLEASE CONTACT NITSCH ENGINEERING.
- 6.) FEMA LINES SHOWN HEREON ARE COMPILED FROM FLOOD INSURANCE RATE MAP COMMUNITY NO. 25001C0502J, EFFECTIVE DATE: JULY 16, 2014.

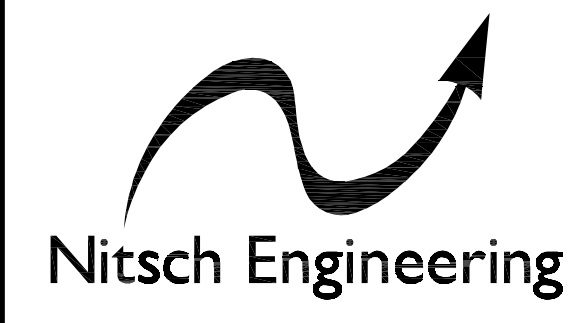
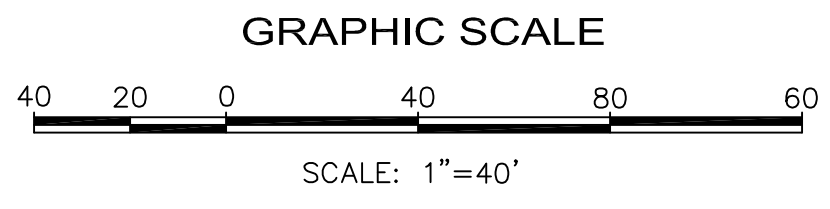
**LEGEND**

- |   |  |
|---|--|
| <ul style="list-style-type: none"> <li>■ CATCH BASIN</li> <li>○ DRAIN MANHOLE</li> <li>○ MISCELLANEOUS MANHOLE</li> <li>○ SEWER MANHOLE</li> <li>○ TELEPHONE MANHOLE</li> <li>○ GAS SHUT-OFF</li> <li>○ WATER SHUT-OFF</li> <li>○ WATER GATE</li> <li>○ FIRE HYDRANT</li> <li>○ DOWN SPOUT</li> <li>○ UTILITY POLE</li> <li>○ LIGHT POLE</li> <li>○ LANDSCAPE LIGHT</li> <li>○ HAND HOLE</li> <li>○ FIRE ALARM CALL BOX</li> <li>○ METAL POST</li> <li>○ PARKING METER</li> <li>○ SIGN POST</li> <li>○ 12" DECIDUOUS TREE WITH TRUNK DIAMETER</li> <li>○ 12" CONIFEROUS TREE WITH TRUNK DIAMETER</li> <li>○ 70x52 SPOT ELEVATION</li> <li>○ CLF CHAIN LINK FENCE</li> </ul> | <ul style="list-style-type: none"> <li>CCBB "CAPE COD" BITUMINOUS CONCRETE BERM</li> <li>VGC VERTICAL GRANITE CURB</li> <li>WCR WHEELCHAIR RAMP</li> <li>LST LANDSCAPE TIMBER</li> <li>R= RIM ELEVATION EQUALS</li> <li>I= INVERT ELEVATION EQUALS</li> <li>TH= TOP OF HOOD ELEVATION EQUALS</li> <li>NO PIPES VISIBLE</li> <li>TOW= TOP OF WATER</li> <li>TW= TOP OF WALL ELEVATION</li> <li>CATV UNDERGROUND CABLE TELEVISION LINE</li> <li>D UNDERGROUND DRAIN LINE</li> <li>E UNDERGROUND ELECTRIC LINE</li> <li>G UNDERGROUND GAS LINE</li> <li>S UNDERGROUND SEWER LINE</li> <li>T UNDERGROUND TELEPHONE LINE</li> <li>W UNDERGROUND WATER LINE</li> <li>OHW OVERHEAD WIRES</li> <li>BENCH MARK</li> </ul> |
|---|--|



**UTILITY INFORMATION STATEMENT**

1. THE SUB-SURFACE UTILITY INFORMATION SHOWN HEREON IS COMPILED BASED ON FIELD SURVEY INFORMATION, RECORD INFORMATION AS SUPPLIED BY THE APPROPRIATE UTILITY COMPANIES, AND PLAN INFORMATION SUPPLIED BY THE CLIENT, IF ANY; THEREFORE WE CANNOT GUARANTEE THE ACCURACY OF SAID COMPILED SUB-SURFACE INFORMATION TO ANY CERTAIN DEGREE OF STATED TOLERANCE. ONLY PHYSICALLY LOCATED SUB-SURFACE UTILITY FEATURES FALL WITHIN NORMAL STANDARD OF CARE ACCURACIES.
2. THE LOCATIONS OF UNDERGROUND PIPES, CONDUITS, AND STRUCTURES HAVE BEEN DETERMINED FROM SAID INFORMATION, AND ARE APPROXIMATE ONLY. COMPILED LOCATIONS OF ANY UNDERGROUND STRUCTURES, NOT VISIBLY OBSERVED AND LOCATED, CAN VARY FROM THEIR ACTUAL LOCATIONS.
3. ADDITIONAL BURIED UTILITIES/STRUCTURES MAY BE ENCOUNTERED.
4. THE STATUS OF UTILITIES, WHETHER ACTIVE, ABANDONED, OR REMOVED, IS AN UNKNOWN CONDITION AS FAR AS OUR COMPILATION OF THIS INFORMATION.
5. IT IS INCUMBENT UPON INDIVIDUALS USING THIS INFORMATION TO UNDERSTAND THAT COMPILING UTILITY INFORMATION IS NOT EXACT, AND IS SUBJECT TO CHANGE BASED UPON VARYING PLAN INFORMATION RECEIVED AND ACTUAL LOCATIONS.
6. THE ACCURACY OF MEASURED UTILITY INVERTS AND PIPE SIZES IS SUBJECT TO FIELD CONDITIONS, THE ABILITY TO MAKE VISUAL OBSERVATIONS, DIRECT ACCESS TO THE VARIOUS ELEMENTS AND OTHER MATTERS.
7. THE PROPER UTILITY ENGINEERING/COMPANY SHOULD BE CONSULTED AND THE ACTUAL LOCATIONS OF SUBSURFACE STRUCTURES SHOULD BE VERIFIED IN THE FIELD (V.I.F.) BEFORE PLANNING FUTURE CONNECTIONS. CONTACT THE DIG SAFE CALL CENTER AT 1-888-344-7233, SEVENTY-TWO HOURS PRIOR TO EXCAVATION, BLASTING, GRADING, AND/OR PAVING.



**www.nitscheng.com**  
 2 Center Plaza, Suite 430  
 Boston, MA 02108  
 T: (617) 338-0063  
 F: (617) 338-6472

- ▶ Civil Engineering
- ▶ Land Surveying
- ▶ Transportation Engineering
- ▶ Structural Engineering
- ▶ Green Infrastructure
- ▶ Planning
- ▶ GIS

PROJECT # 11078.1  
 FILE: 11078.1\_TOPO1.dwg  
 SCALE: 1"=20'  
 DATE: NOV. 6, 2015  
 PROJECT MANAGER: JGG  
 FIELD BOOK: 625  
 DRAFTED BY: JNEI  
 CHECKED BY:

REV.	COMMENTS	DATE

**EXISTING CONDITIONS**  
 JAMES PEEBLES ELEMENTARY SCHOOL  
 70 TROWBRIDGE ROAD, BUZZARDS BAY, MASSACHUSETTS 02532  
 PREPARED FOR:  
**FLANSBURGH ARCHITECTS**  
 77 NORTH WASHINGTON STREET, BOSTON, MASSACHUSETTS 02114

SHEET:  
**EX-1**  
 OF 4 REV.



October 26, 2016

Ms. Kathryn DeCristofaro  
Capital Program Manager  
Massachusetts School Building Authority  
40 Broad Street  
Boston, Massachusetts 02109

**Re: Peebles Elementary School**

**Bourne, Massachusetts**

*Schematic Design FF&E and Technology Budgets*

*SMMA No. 15041*

Dear Kathryn:

Please find the Furniture and Equipment Budget dated October 19, 2016 and the Educational Technology Equipment Budget for the Schematic Design submission.

Very truly yours,

**SMMA | Symmes Maini & McKee Associates**



Joel G. Seeley  
Project Director

cc: James Potter, SBC Chair, Kent Kovacs, FAI (MF)

enclosures: Furniture and Equipment Budget dated October 19, 2016  
Educational Technology Equipment Budget – October 2016

JGS/sat /P:\2015\15041\05-  
TRANSL\_Kdecrisofaro\_FF&E-  
Technologybudgets\_26October  
2016.Docx

1000 Massachusetts Avenue  
Cambridge, MA 02138  
617.547.5400

[www.smma.com](http://www.smma.com)

**JAMES F. PEBBLES ELEM. SCHOOL  
BOURNE, MASSACHUSETTS**

**PRELIMINARY FURNITURE & EQUIPMENT BUDGET - OCTOBER 19, 2016**

<b>I. FURNITURE &amp; EQUIPMENT CATEGORIES</b>	<b>\$482,938.00</b>
Miscellaneous Furniture & Equipment	\$220,163.00
Office Furniture & Equipment	\$147,360.00
Library Furniture & Equipment	\$66,290.00
Metal Storage Shelving	\$10,925.00
Cafeteria Furniture	\$38,200.00
<b>II. EQUIPMENT CATEGORIES</b>	<b>\$207,062.00</b>
Gymnasium/Fitness Equipment	\$35,509.00
Copiers - State Contract Pricing	\$40,000.00
Custodial/Maintenance & Grounds Equipment	\$42,433.00
Health Equipment	\$7,962.00
Miscellaneous Equipment	\$12,540.00
Music Equipment	\$14,392.00
Art Equipment	\$5,008.00
Science Equipment (Allowance)	\$5,000.00
Kitchen Smallwares	\$9,218.00
Library Books (Allowance)	\$35,000.00
<b>TOTAL - GROUPS I and II</b>	<b>\$690,000.00</b>

SECTION 101 - MISCELLANEOUS FURNITURE & EQUIPMENT

Item	Item Description	Make & Model	Qty.	Unit Price	Total Price
CS-01A	Student Chair-13"	Alumni "Integrity" C-INT-SMOOTH-CANT-13	540	\$65.00	\$35,100.00
CS-01B	Student Chair-14"	Alumni "Integrity" C-INT-SMOOTH-CANT-14	24	\$68.00	\$1,632.00
CS-01C	Student Chair-15"	Alumni "Integrity" C-INT-SMOOTH-CANT-15	374	\$67.00	\$25,058.00
CS-01D	Student Chair-17"	Alumni "Integrity" C-INT-SMOOTH-CANT-17	72	\$72.00	\$5,184.00
CS-02A	Worktable, Rect., 60"x30", Adj.	Allied/Smith	2	\$240.00	\$480.00
CS-02B	Worktable, Rect., 72"x30", Adj.	Allied/Smith	2	\$300.00	\$600.00
CS-02C	Worktable, Rect., 54"x21", Adj.	Allied/Smith	65	\$200.00	\$13,000.00
CS-02D	Worktable, Rect., 60"x36", Adj.	Allied/Smith	124	\$290.00	\$35,960.00
CS-02E	Worktable, Round, 36", Adj.	Allied/Smith	1	\$235.00	\$235.00
CS-02F	Worktable, Round, 48", Adj.	Allied/Smith	24	\$300.00	\$7,200.00
CS-02G	Worktable, Kidney, 72"x36", Adj.	Allied/Smith	27	\$370.00	\$9,990.00
CS-02I	Worktable, Rect., 72"x24", Adj.	Allied/Smith	56	\$280.00	\$15,680.00
CS-03C	Music Stand	Manhasset	15	\$40.00	\$600.00
CS-03D	Music Stand Cart	Wenger 039D202	2	\$485.00	\$970.00
CS-04A	Recovery Cot	School Health Supply 24276	3	\$875.00	\$2,625.00
CS-04B	Side Table	School Health Supply 24479	2	\$400.00	\$800.00
CS-04C	Exam Stool	School Health Supply 24148	1	\$139.00	\$139.00
CS-04D	Exam Lamp	School Health Supply 24852	1	\$78.00	\$78.00
CS-04E	Medical Waste Receptacle	School Health Supply 24021	3	\$120.00	\$360.00
CS-04F	Scale	School Health Supply 58049	1	\$475.00	\$475.00
CS-04G	Wheelchair	School Health Supply 10008	1	\$380.00	\$380.00
CS-05A	Wastebasket	School Spec. 068127	44	\$14.00	\$616.00
CS-05B	Recycling Bin-Blue	School Spec. 2956-73BE	44	\$6.00	\$264.00
CS-05C	Trash Barrel - 32 Gallon	Rubbermaid	16	\$52.00	\$832.00
CS-05E	Flag w/Flag Holder	School Spec. 1303567/016794	36	\$11.00	\$396.00
CS-05F	U.S. Flag Set	School Spec. 864633-US	1	\$150.00	\$150.00
CS-05G	MA. Flag Set	School Spec. 023350 w/027602MA	1	\$150.00	\$150.00
CS-05H	Trash Container	Rubbermaid	6	\$680.00	\$4,080.00
CS-06A	Metal Storage Cabinet	Parent Metal 278S	3	\$375.00	\$1,125.00
CS-06B	Flammable Storage Cabinet	Lyon 5444N	1	\$760.00	\$760.00
CS-06C	Utility Cart	School Spec. 678722	1	\$145.00	\$145.00
CS-07A	Cabinet-36"Wx27"Dx72"H	Fleetwood 7705X.627	5	\$975.00	\$4,875.00
CS-07B	Stor. Cabt.-36"Wx27"Dx72"H	Fleetwood 7708X.627	6	\$950.00	\$5,700.00
CS-07C	Cabt.-36"Wx12"Dx72"H	Fleetwood	5	\$700.00	\$3,500.00
CS-07D	Shelving Unit-36"Wx12"Dx29"H	Fleetwood 16.0095.5X.000	63	\$160.00	\$10,080.00
CS-08A	Area Carpet-K, 9'x12'	TBD	12	\$622.00	\$7,464.00
CS-08B	Area Carpet-F/S	TBD	13	\$450.00	\$5,850.00
CS-22	Upright Piano/Bench/Cover/Dolly	Yamaha P22T	1	\$4,900.00	\$4,900.00
CS-29	Drying Rack	Sax Arts	1	\$1,250.00	\$1,250.00
CS-31	Evacuation Chair	School Health	2	\$2,500.00	\$5,000.00
CS-35	Sand & Water Table	Lakeshore JJ512	12	\$280.00	\$3,360.00
CS-36	Book Display	School Specialty	12	\$260.00	\$3,120.00
TOTAL BUDGET - SECTION 101					\$220,163.00







SECTION 105 - CAFETERIA FURNITURE

Item	Item Description	Make & Model	Qty.	Unit Price	Total Price
CF-01	Roll-Fold Round Table w/8 Stools	Sico	9	\$1,400.00	\$12,600.00
CF-02	Roll-Fold Round Rect, Table w/8 Stools	Sico	16	\$1,600.00	\$25,600.00
TOTAL BUDGET - SECTION 105					\$38,200.00

SECTION 201 - GYMNASIUM/FITNESS EQUIPMENT

Item	Item Description	Qty.	Unit Price	Total Price
GF-02	Clipboard	3	\$5.00	\$15.00
GF-03	Digital Skin Caliper	1	\$73.00	\$73.00
GF-04	Megaphone	1	\$48.00	\$48.00
GF-05	Official Referee Whistle (Dozen)	1	\$3.00	\$3.00
GF-06	Lanyard Set	6	\$3.00	\$18.00
GF-07	Electric Inflator	2	\$45.00	\$90.00
GF-08	Large Mesh Bag Set	2	\$19.00	\$38.00
GF-09	Full-Size Ball Cart	2	\$170.00	\$340.00
GF-10	Portable Game Standards-10' (Pair)	2	\$475.00	\$950.00
GF-11	Badminton Racket	20	\$5.00	\$100.00
GF-12	Mini Badminton Racket	20	\$8.00	\$160.00
GF-13	Softball Base Set (3 Bases)	1	\$12.00	\$12.00
GF-14	Softball Home Plate	1	\$15.00	\$15.00
GF-15	Standard Rubber Base Set (4)	1	\$5.00	\$5.00
GF-16	Scooter Set	4	\$110.00	\$440.00
GF-17	Scooter Stacker	2	\$38.00	\$76.00
GF-18	Floor Hockey Goal w/Net	2	\$335.00	\$670.00
GF-19	Foor Hockey Stick Set	1	\$115.00	\$115.00
GF-20	Floor Hockey Pucks	12	\$4.00	\$48.00
GF-21	Fitness Dual Sit & Reach	1	\$370.00	\$370.00
GF-22	Parachute	1	\$240.00	\$240.00
GF-23	Jump Rope Set	6	\$15.00	\$90.00
GF-24	Waist Band (Red)	24	\$8.00	\$192.00
GF-25	Waist Band (Blue)	24	\$8.00	\$192.00
GF-26	Stopwatch Set	1	\$36.00	\$36.00
GF-27	Portable Scoreboard	2	\$27.00	\$54.00
GF-28	Flag Set-Yellow	1	\$14.00	\$14.00
GF-29	Flag Set-Red	1	\$14.00	\$14.00
GF-30	Tam Dodgebowl	1	\$218.00	\$218.00
GF-31	Tug of War Rope	2	\$31.00	\$62.00
GF-32	Rainbow Scoop Set	2	\$21.00	\$42.00
GF-33	Half Cone Set (36 Cones/Cart)	1	\$17.00	\$17.00
GF-34	Cone Set-12"	6	\$25.00	\$150.00
GF-35	Beanbag Set	2	\$10.00	\$20.00
GF-36	Hoola Hoop Set	2	\$36.00	\$72.00
GF-37	Ball Inflation Needles (Dozen)	4	\$2.00	\$8.00
GF-38	Frisbee Set	3	\$4.00	\$12.00
GF-39	Low Balance Beam	2	\$675.00	\$1,350.00
GF-40	Folding Mat-V4, 6'	18	\$260.00	\$4,680.00
GF-41	Weighted Cones	1se	\$100.00	\$100.00
GF-42	Batting Tee	4	\$25.00	\$100.00
GF-43	Traverse Wall	1	\$14,000.00	\$14,000.00
GF-44	Cargo net/Hoist	1	\$9,500.00	\$9,500.00
GF-45	Ballet Bar, 14'	2	\$380.00	\$760.00
	TOTAL BUDGET - SECTION 201			\$35,509.00



SECTION 203 - CUSTODIAL/MAINTENANCE & GROUNDS EQUIPMENT

Item	Item Description	Qty.	Unit Price	Total Price
CG-01	Hand Truck	2	\$252.00	\$504.00
CG-02	Platform Truck	1	\$656.00	\$656.00
CG-03	Tools Kit	1	\$668.00	\$668.00
CG-04	Step Ladder, 6'	1	\$110.00	\$110.00
CG-05	Step Ladder, 8'	1	\$222.00	\$222.00
CG-06	Step Ladder, 10'	1	\$299.00	\$299.00
CG-07	Extension Ladder, 24'	1	\$340.00	\$340.00
CG-08	Dust Pan w/Long Handle	3	\$27.00	\$81.00
CG-09	Bucket/Wringer	6	\$140.00	\$840.00
CG-10	Floor Sign "Caution"	6	\$20.00	\$120.00
CG-11	Janitor Cart	3	\$279.00	\$837.00
CG-12	Autoscrubber, 32"	1	\$11,220.00	\$11,220.00
CG-13	Carpet Extractor	1	\$7,876.00	\$7,876.00
CG-14	Backpack Vacuum	2	\$539.00	\$1,078.00
CG-15	Wet/Dry Vacuum	1	\$616.00	\$616.00
CG-16	Air Mover	1	\$298.00	\$298.00
CG-17	Round Container, 44 Gallon	8	\$72.00	\$576.00
CG-18	Round Dolly, 5-Wheel	8	\$86.00	\$688.00
CG-19	Safety Can, 5 Gallon	2	\$63.00	\$126.00
CG-22	Upright Vacuum, 18"	1	\$645.00	\$645.00
CG-23	Upright Vacuum, 14"	1	\$485.00	\$485.00
CG-26	Telecoping Lift-25' w/Straddle	1	\$12,000.00	\$12,000.00
CG-27	Spreader - Ice Melt	1	\$210.00	\$210.00
CG-28	Leaf Blower	1	\$245.00	\$245.00
CG-29	Road Rake	2	\$74.00	\$148.00
CG-30	Landscape Rake	2	\$89.00	\$178.00
CG-31	Lawn Rake	2	\$39.00	\$78.00
CG-32	Round Point Shovel	1	\$43.00	\$43.00
CG-33	Round Point, Closed Back Shovel	1	\$48.00	\$48.00
CG-34	Square Point Steel Shovel	1	\$38.00	\$38.00
CG-35	Cone System, 36"	2	\$310.00	\$620.00
CG-36	Wall Washing Kit	1	\$216.00	\$216.00
CG-37	Overhead Duster	2	\$32.00	\$64.00
CG-38	Dust Mop Metal Frame, 24"	3	\$10.00	\$30.00
CG-39	Dust Mop Metal Frame, 36"	2	\$12.00	\$24.00
CG-40	Dust Mop Metal Frame, 48"	1	\$17.00	\$17.00
CG-41	Dust Mop Metal Frame, 60"	1	\$31.00	\$31.00
CG-43	Dust Pan	6	\$11.00	\$66.00
CG-44	Floor Squeegee, 24"	3	\$21.00	\$63.00
CG-45	Floor Squeegee, 36"	1	\$29.00	\$29.00

TOTAL BUDGET - SECTION 203

\$42,433.00



SECTION 205 - MISCELLANEOUS TEACHING AIDS

Item	Item Description	Qty.	Unit Price	Total Price
MTA-01	3-Command Hooks	144	\$4.00	\$576.00
MTA-02	3-Hole Punch	36	\$43.00	\$1,548.00
MTA-03	Book Ends	72	\$4.00	\$288.00
MTA-04	Calculator	1	\$58.00	\$58.00
MTA-05	Cash Box	1	\$76.00	\$76.00
MTA-06	Clipboards	72	\$1.00	\$72.00
MTA-07	Desk Organizer	36	\$12.00	\$432.00
MTA-08	Mini Dry Erase Board	120	\$3.00	\$360.00
MTA-09	Globe, 12"	16	\$34.00	\$544.00
MTA-10	Desk-Top Laminator	1	\$248.00	\$248.00
MTA-10A	27" Laminator	1	\$1,200.00	\$1,200.00
MTA-11	Letter Folding Machine	1	\$260.00	\$260.00
MTA-12	Meter Stick	72	\$7.00	\$504.00
MTA-13	Ruler, Metric/Inches	240	\$1.00	\$240.00
MTA-14	2-Way Radio	4	\$38.00	\$152.00
MTA-15	Paper Cutter	3	\$250.00	\$750.00
MTA-16	Electric Pencil Sharpener	36	\$38.00	\$1,368.00
MTA-17	4-Compartment Caddie, Plastic	36	\$21.00	\$756.00
MTA-18	StorageTubs/Bins w/Covers, Plastic	240	\$7.00	\$1,680.00
MTA-19	Power Strip, Surge Protector	10	\$10.00	\$100.00
MTA-20	Shredder, 99 ci	1	\$325.00	\$325.00
MTA-21	Stapler	72	\$8.00	\$576.00
MTA-22	Stapler, Heavy-Duty	1	\$115.00	\$115.00
MTA-23	Tape Dispenser	72	\$3.00	\$216.00
MTA-24	Label Manager	2	\$48.00	\$96.00
TOTAL BUDGET - SECTION 205				\$12,540.00



SECTION 207 - ART EQUIPMENT

Item	Item Description	Qty.	Unit Price	Total Price
ART-03	Drying Rack, Spring-Loaded	2	\$710.00	\$1,420.00
ART-05	Modeling Tool Canister	2	\$100.00	\$200.00
ART-07	Clay Container	2	\$48.00	\$96.00
ART-08	Kiln Cart	1	\$700.00	\$700.00
ART-10	Glue Gun	2	\$8.00	\$16.00
ART-12	Staple Gun	1	\$18.00	\$18.00
ART-13	Paper Cutter	1	\$590.00	\$590.00
ART-14	Student Scissors	30	\$5.00	\$150.00
ART-16	Pencil Sharpener	2	\$58.00	\$116.00
ART-19	Folding Step Stool	1	\$52.00	\$52.00
ART-23	Slab Roller, Table Top (Clay)	1	\$750.00	\$750.00
ART-24	Self-Portrait Mirror, Tabletop	30	\$10.00	\$300.00
ART-25	Color Printer	1	\$600.00	\$600.00
	<b>TOTAL BUDGET - SECTION 207</b>			<b>\$5,008.00</b>

SECTION 209 - KITCHEN SMALLWARES

Item	Item Description	Qty.	Unit Price	Total Price
KS-01	Full Hotel Pan, 2-1/2"D	8	\$15.00	\$120.00
KS-02	Half Hotel Pan, 2-1/2"D	8	\$9.00	\$72.00
KS-03	Full Sheet Pan	60	\$7.00	\$420.00
KS-04	Half Sheet Pan	35	\$6.00	\$210.00
KS-05	Sheet Pan Rack	2	\$496.00	\$992.00
KS-10	Third Hotel Pan, 2-1/2D	10	\$9.00	\$90.00
KS-11	Half Long Pan, 2-1/2"D	6	\$15.00	\$90.00
KS-12	Half Long Pan, 4"D	6	\$19.00	\$114.00
KS-13	Full Perforated Pan, 2-1/2"D	4	\$23.00	\$92.00
KS-14	Full Perforated Pan, 4"D	4	\$28.00	\$112.00
KS-15	Half Perforated Pan, 2-1/2"D	4	\$16.00	\$64.00
KS-16	Adaptor Bars, 12	10	\$1.00	\$10.00
KS-17	Adaptor Bars, 20-1/2	10	\$2.00	\$20.00
KS-19	Sauce Pan, 3-3/4 Qt.	2	\$14.00	\$28.00
KS-20	Sauce Pan, 5-1/2 Qt.	2	\$20.00	\$40.00
KS-21	Sauce Pan, 7 Qt.	2	\$23.00	\$46.00
KS-22	Braizer, 15 Qt.	1	\$75.00	\$75.00
KS-23	Muffin Pan, 24-Cup	6	\$15.00	\$90.00
KS-24	Fry Pan, 14"	2	\$32.00	\$64.00
KS-25	Stock Pot, 40 Quart	2	\$155.00	\$310.00
KS-26	Cutting Board Set/Stand	1	\$134.00	\$134.00
KS-27	Pail, 6 Quart	6	\$3.00	\$18.00
KS-28	Scale, Oz.	2	\$73.00	\$146.00
KS-29	Scale, Lb.	1	\$76.00	\$76.00
KS-30	Can Opener, Manual	2	\$301.00	\$602.00
KS-32	Insta-Slice	1	\$246.00	\$246.00
KS-33	Piano Whip, 12"L	2	\$3.00	\$6.00
KS-34	Colander, 11 Quart	2	\$53.00	\$106.00
KS-36	Strainer, 11-3/4"	2	\$12.00	\$24.00
KS-37	Basting Brush, 2"	6	\$6.00	\$36.00
KS-38	Scraper, Plastic	12	\$2.00	\$24.00
KS-39	Paddle, 48"L	1	\$18.00	\$18.00
KS-40	S/S Utility Tongs, 9-1/2"L	6	\$2.00	\$12.00
KS-41	S/S Utility Tongs, 12"L	6	\$2.00	\$12.00
KS-42	Solid Spoon, 13"	12	\$2.00	\$24.00
KS-43	Perforated Spoon, 13"	12	\$2.00	\$24.00
KS-44	Skimmer	2	\$3.00	\$6.00
KS-45	Scoop	6	\$3.00	\$18.00
KS-46	Ladle, 2 Oz.	6	\$3.00	\$18.00
KS-47	Ladle, 4 Oz.	6	\$3.00	\$18.00
KS-48	Ladle, 6 Oz.	6	\$4.00	\$24.00
KS-49	Ladle, 8 Oz.	4	\$2.00	\$8.00
KS-50	#6 Disher, White	2	\$6.00	\$12.00
KS-51	#8 Disher, Gray	2	\$6.00	\$12.00
KS-52	#10 Disher, Ivory	2	\$6.00	\$12.00
KS-53	#12 Disher, Green	2	\$6.00	\$12.00
KS-54	#16 Disher, Blue	2	\$6.00	\$12.00
KS-55	#20 Disher, Yellow	2	\$6.00	\$12.00
KS-60	Measure, 2 Quart	2	\$6.00	\$12.00
KS-61	Pail Opener	1	\$14.00	\$14.00

SECTION 209 - KITCHEN SMALLWARES

Item	Item Description	Qty.	Unit Price	Total Price
KS-62	Cake Turner	1	\$14.00	\$14.00
KS-63	Pie Knife	2	\$9.00	\$18.00
KS-64	Taco Rail	8	\$39.00	\$312.00
KS-65	Pocket Thermometer	8	\$5.00	\$40.00
KS-66	Food Storage Box	6	\$26.00	\$156.00
KS-67	Food Storage Box	6	\$36.00	\$216.00
KS-68	Pizza Peel	2	\$8.00	\$16.00
KS-69	Pizza Cutter	2	\$12.00	\$24.00
KS-70	Pan Grabber	12	\$1.00	\$12.00
KS-71	Multi Mat II, 3'x64' Roll	2	\$575.00	\$1,150.00
KS-72	Trash Barrel	3	\$45.00	\$135.00
KS-73	Utility Cart	2	\$125.00	\$250.00
KS-75	Knife Rack	1	\$39.00	\$39.00
KS-76	Tomato Saber	1	\$220.00	\$220.00
KS-77	Insta Dice	1	\$128.00	\$128.00
KS-79	Pizza Pan, 16"	12	\$3.00	\$36.00
KS-80	Elevator Riser, Full Size	12	\$59.00	\$708.00
KS-82	Vegetable Peeler	6	\$3.00	\$18.00
KS-83	Can Opener w/Clamp Kit	1	\$345.00	\$345.00
KS-84	Dipper	2	\$34.00	\$68.00
KS-85	First Aid Kit	1	\$68.00	\$68.00
KS-86	Mixing Bowl, 8 Quart	4	\$3.00	\$12.00
KS-87	Mixing Bowl, 13 Quart	4	\$5.00	\$20.00
KS-88	Dredge	2	\$2.00	\$4.00
KS-89	Tomato Shark Corer	2	\$3.00	\$6.00
KS-90	55-Cup Coffee Urn Brewer	2	\$155.00	\$310.00
KS-91	Scub Brush	2	\$8.00	\$16.00
KS-92	Hand Truck	1	\$120.00	\$120.00

TOTAL BUDGET - SECTION 209

\$9,218.00

Item	Educational Technology Equipment Category	Equipment Estimates
A.	<i>Core Equipment</i>	\$ 65,000.00
	Network Server(s) /Storage/Firewall	\$ 25,000.00
	Wireless System	\$ 40,000.00
B.	<i>Teacher/Admin Computer and Tablet equipment</i>	\$ 67,000.00
	Desktop computers	\$ 15,000.00
	Laptop computers	\$ 52,000.00
C.	<i>Student Computer and Tablet equipment</i>	\$ 283,000.00
	Desktop computers	\$ 75,000.00
	Student one-one-devices	\$ 138,000.00
	Mobile Charging Carts	\$ 70,000.00
D.	<i>Audio Visual</i>	\$ 207,000.00
	Classroom Display Equipment	\$ 180,000.00
	Document Cameras	\$ 12,000.00
	Team Room AV	\$ 15,000.00
E.	<i>Printers</i>	\$ 18,000.00
	Workgroup Printers	\$ 8,000.00
	High Speed Copier/Printers	\$ 10,000.00
F.	<i>Other Systems</i>	\$ 10,000.00
	Cafeteria POS	\$ 10,000.00
H.	<i>Installation and Configuration</i>	\$ 40,000.00
I.	<i>Total</i>	\$ 690,000.00



# Bourne High School Capacity Review

**DRAFT** DATE: OCTOBER 25, 2017



Flansburgh Architects

# Bourne, MA Projected Enrollment - preliminary

School District: Bourne, MA DESE

10/7/2016

Enrollment Projections By Grade*												
Birth Year	Births	School Year	PK	K	1	2	3	4	5	6	7	8
2011	173	2016-17	69	102	151	166	158	164	165	176	183	194
2012	141	2017-18	62	104	123	156	174	162	173	166	174	184
2013	145	2018-19	63	107	126	127	163	178	171	164	175	118
2014	155	2019-20	64	115	129	130	133	167	188	172	165	112
2015	154	2020-21	65	114	139	136	136	176	189	170	173	106
2016	154	2021-22	66	114	138	143	139	139	143	177	187	171
2017	150	2022-23	67	111	138	142	150	147	144	144	175	188
2018	151	2023-24	68	112	134	142	148	154	150	142	148	176
2019	153	2024-25	69	113	136	138	148	151	162	146	146	142
2020	152	2025-26	70	113	137	140	144	152	160	149	149	146
2021	152	2026-27	71	112	137	141	146	148	160	161	161	149
	(est.)		(est.)									94

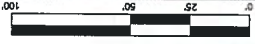
\*Projections should be updated on an annual basis in order to reflect changes in births, real estate sales, in-/out-migration of families and housing construction.  Based on an estimate of births.  Based on children already born.  Based on students already enrolled.

Year	K-4	PK-4	K-6	K-8	5-8	6-8	7-8	7-12	9-12
2016-17	741	810	1082	1459	718	553	377	824	447
2017-18	719	781	1058	1416	697	524	358	830	472
2018-19	701	764	1046	1385	684	513	339	818	479
2019-20	674	738	1034	1371	697	509	337	811	454
2020-21	658	723	1023	1366	708	532	343	797	441
2021-22	673	739	993	1351	678	535	358	799	441
2022-23	683	750	974	1337	654	507	363	795	432
2023-24	690	758	988	1306	616	466	318	759	441
2024-25	687	756	1000	1288	601	439	288	735	447
2025-26	686	756	1009	1304	618	458	295	723	428
2026-27	684	755	1005	1315	631	471	310	723	413

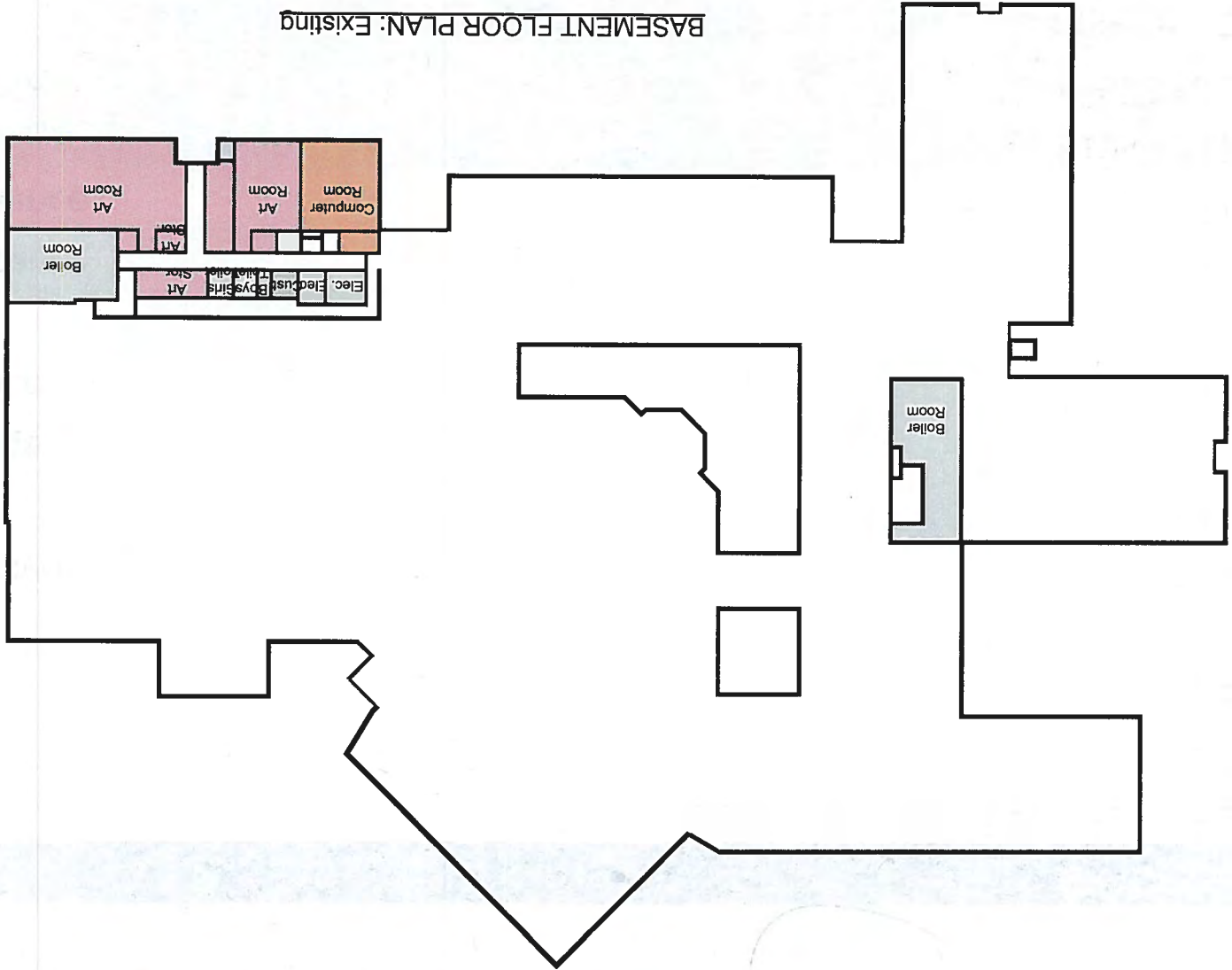
Year	K-12	Diff.	%
2016-17	1912	0	0.0%
2017-18	1900	-18	-0.9%
2018-19	1876	-24	-1.3%
2019-20	1857	-19	-1.0%
2020-21	1832	-25	-1.3%
2021-22	1804	-28	-1.5%
2022-23	1781	-23	-1.3%
2023-24	1759	-22	-1.2%
2024-25	1747	-12	-0.7%
2025-26	1744	-3	-0.2%
2026-27	1740	-4	-0.2%

# Existing Bourne High School - Current Enrollment: 447

PROGRAM	GRADES 9-12
Core Academic	(35 general classrooms, 7 science labs) 36,200
Special Education	2,350
Art & Musics	7,540
Voc. & Technology	11,530
Health&PhysicalEducation	17,500
Media Center	6,800
Auditorium and Stage	9,250
Dining & Food Service	6,770
Medical	300
Administration&Guidance	4,200
Custodial & Maintenance	2,050
Subtotal NSF	104,490 NSF
Corr./Toilets/Walls, Etc.	50,510 NSF
Total GSF	155,000 GSF



BASEMENT FLOOR PLAN: Existing



**SPACE SUMMARY LEGEND**

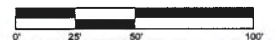
Core Academic Spaces = 36,200 sf	
Special Education = 2,350 sf	
Art & Music = 7,540 sf	
Voc. & Technology = 11,530 sf	
Health & Phys. Ed. = 17,500 sf	
Media Center = 6,800 sf	
Dining & Food Service = 6,770 sf	
Medical = 300 sf	
Admin. & Guidance = 4,200 sf	
Auditorium & Stage = 9,250 sf	
Custodial & Maintenance = 2,050 sf	
<hr/>	
TOTAL NET = 104,490 sf	
TOTAL GROSS = 155,000 sf	



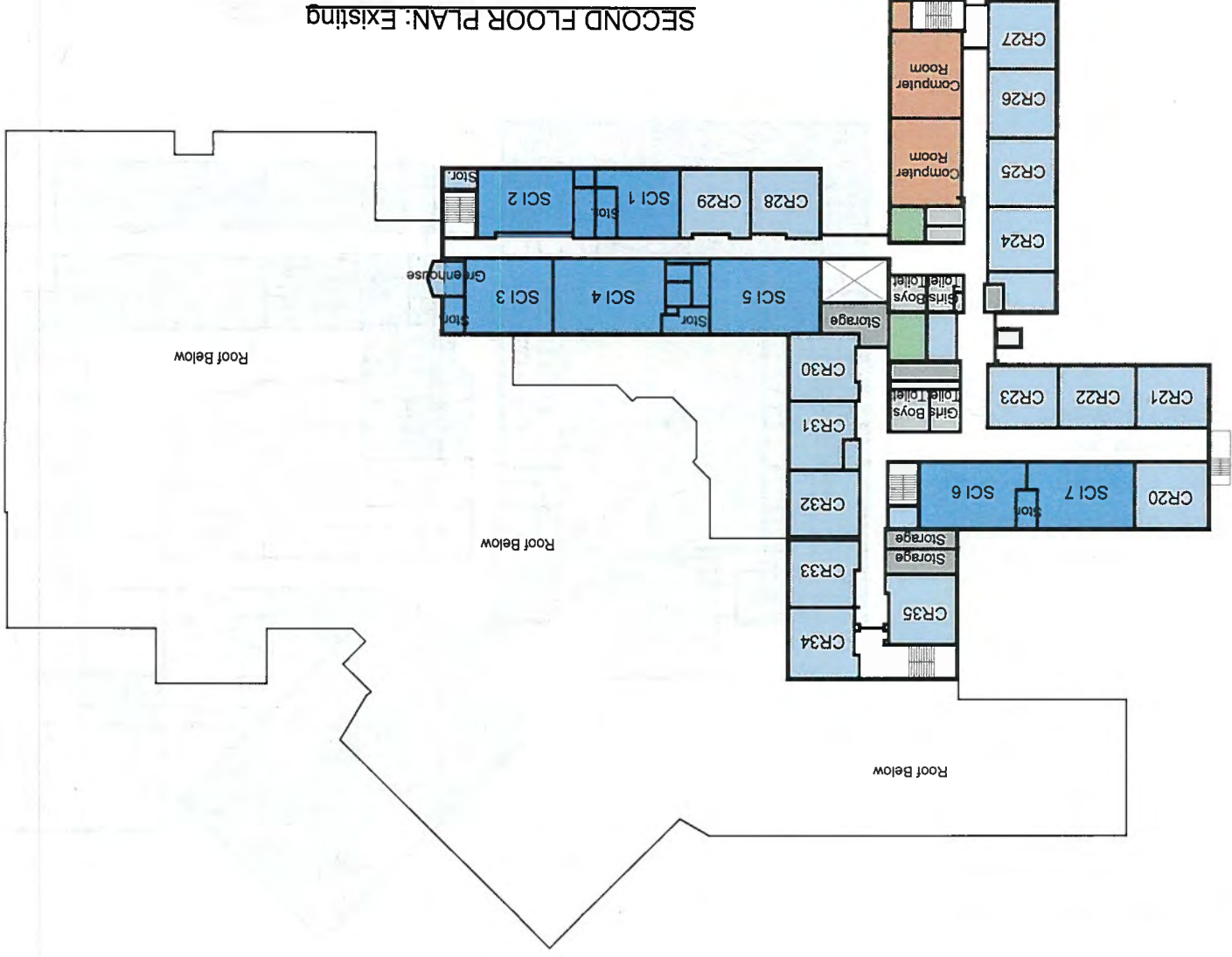
FIRST FLOOR PLAN: Existing

**SPACE SUMMARY LEGEND**

- CORE ACADEMIC SPACES = 36,200 sf
- SPECIAL EDUCATION = 2,350 sf
- ART & MUSIC = 7,540 sf
- VOC. & TECHNOLOGY = 11,530 sf
- HEALTH & PHYS. ED. = 17,500 sf
- MEDIA CENTER = 6,800 sf
- DINING & FOOD SERVICE = 6,770 sf
- MEDICAL = 300 sf
- ADMIN. & GUIDANCE = 4,200 sf
- AUDITORIUM & STAGE = 9,250 sf
- CUSTODIAL & MAINTENANCE = 2,050 sf
- TOTAL NET = 104,490 sf
- TOTAL GROSS = 155,000 sf



SECOND FLOOR PLAN: Existing



**SPACE SUMMARY LEGEND**

Core Academic Spaces = 36,200 sf
Special Education = 2,350 sf
Art & Music = 7,540 sf
Voc. & Technology = 11,530 sf
Health & Phys. Ed. = 17,500 sf
Media Center = 6,800 sf
Dining & Food Service = 6,770 sf
Medical = 300 sf
Admin. & Guidance = 4,200 sf
Auditorium & Stage = 9,250 sf
Custodial & Maintenance = 2,050 sf
<b>TOTAL NET = 104,490 sf</b>
<b>TOTAL GROSS = 155,000 sf</b>



# Bourne High School (Option A) Projected Enrollment: 448

PROGRAM	GRADES 9-12
Core Academic	(21 gen.classrooms, 7 sci.labs, 2 student collab, 2 teacher planning) <b>28,900</b>
Special Education	<b>(Four additional spaces) 5,150</b>
Art & Musics	(no change) 7,540
Voc. & Technology	(no change) 11,530
Health & Physical Education	(no change) 17,500
Media Center	(no change) 6,800
Auditorium and Stage	(no change) 9,250
Dining & Food Service	(no change) 6,770
Medical	(no change) 300
Administration & Guidance	(no change) 4,200
<b>Bridge Program</b>	<b>(New Program) 750</b>
Custodial & Maintenance	(no change) 2,050
Subtotal NSF	104,490 NSF
Corr./Toilets/Walls, Etc.	50,510 NSF
Total GSF	155,000 GSF

**FIRST FLOOR PLAN**  
Student Enrollment: 448



**SPACE SUMMARY LEGEND**

+	NO CHANGE	CORE ACADEMIC SPACES = 28,900 sf
+	NO CHANGE	SPECIAL EDUCATION = 5,150 sf
+	NO CHANGE	ART & MUSIC = 7,540 sf
+	NO CHANGE	VOC. & TECHNOLOGY = 11,530 sf
+	NO CHANGE	HEALTH & PHYS. ED. = 17,500 sf
+	NO CHANGE	MEDIA CENTER = 6,800 sf
+	NO CHANGE	DINING & FOOD SERVICE = 6,770 sf
+	NO CHANGE	MEDICAL = 300 sf
+	NO CHANGE	ADMIN. & GUIDANCE = 4,200 sf
+	NO CHANGE	AUDITORIUM & STAGE = 9,250 sf
+	NO CHANGE	STODIAL & MAINTENANCE = 2,050 sf
+	NO CHANGE	BRIDGE PROGRAM = 750 sf
+	NO CHANGE	(5) FLEX CLASSROOM = 3,750 sf
<hr/>		
TOTAL NET = 104,490 sf		
TOTAL GROSS = 155,000 sf		

**EXISTING CORE ACADEMIC**

CLASROOMS = 35
SCIENCE ROOMS = 7
TOTAL SPACES = 42

**REVISED CORE ACADEMIC**

CLASROOMS = 21
SCIENCE ROOM = 7
TEACHER PLANNING = 2
STUDENT COLLABORATIVE = 2
TOTAL SPACES = 32 @ 28,900sf







**SPACE SUMMARY LEGEND**

CORE ACADEMIC SPACES = 28,900 sf	[Blue Box]
+ (4) ROOMS SPECIAL EDUCATION = 5,150 sf	[Orange Box]
*NO CHANGE ART & MUSIC = 7,540 sf	[Pink Box]
*NO CHANGE VOC. & TECHNOLOGY = 11,530 sf	[Light Blue Box]
*NO CHANGE HEALTH & PHYS. ED. = 17,500 sf	[Light Green Box]
*NO CHANGE MEDIA CENTER = 6,800 sf	[Light Yellow Box]
*NO CHANGE DINING & FOOD SERVICE = 6,770 sf	[Light Purple Box]
*NO CHANGE MEDICAL = 300 sf	[Light Cyan Box]
*NO CHANGE ADMIN. & GUIDANCE = 4,200 sf	[Light Green Box]
*NO CHANGE AUDITORIUM & STAGE = 9,250 sf	[Light Blue Box]
*NO CHANGE CUSTODIAL & MAINTENANCE = 2,050 sf	[Light Grey Box]
BRIDGE PROGRAM = 750 sf	[Purple Box]
(5) FLEX CLASSROOM = 3,750 sf	[Dark Purple Box]
TOTAL NET = 104,490 sf	
TOTAL GROSS = 155,000 sf	

<b>EXISTING CORE ACADEMIC</b>	
CLASSROOMS = 35	
SCIENCE ROOMS = 7	
<b>TOTAL SPACES = 42</b>	

<b>REVISED CORE ACADEMIC</b>	
CLASSROOMS = 21	
SCIENCE ROOM = 7	
TEACHER PLANNING = 2	
STUDENT COLLABORATIVE = 2	
<b>TOTAL SPACES = 32 @ 28,900sf</b>	

**SECOND FLOOR PLAN**  
Student Enrollment: 448



# Bourne High School (Option B) Projected Enrollment: 448

## PROGRAM GRADES 9-12

Core Academic (21 gen.classrooms, 7 sci.labs, 2 student collab, 2 teacher planning) **28,900**

Special Education **(Four additional spaces) 5,150**

Art & Musics (no change) 7,540

Voc. & Technology (no change) 11,530

Health & Physical Education (no change) 17,500

Media Center (no change) 6,800

Auditorium and Stage (no change) 9,250

Dining & Food Service (no change) 6,770

Medical (no change) 300

Administration & Guidance (no change) 4,200

**Bridge Program (New Program) 750**

**Central Office (New Program) 3,750**

Custodial & Maintenance (no change) 2,050

Subtotal NSF 104,490 NSF

Corr./Toilets/Walls, Etc. 50,510 NSF

Total GSF 155,000 GSF

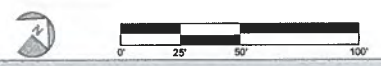


**FIRST FLOOR PLAN**  
Student Enrollment: 448

<b>SPACE SUMMARY LEGEND</b>	
CORE ACADEMIC SPACES = 28,900 sf	[Blue Box]
+ (4) ROOMS SPECIAL EDUCATION = 5,150 sf	[Orange Box]
*NO CHANGE ART & MUSIC = 7,540 sf	[Purple Box]
*NO CHANGE VOC. & TECHNOLOGY = 11,530 sf	[Light Blue Box]
*NO CHANGE HEALTH & PHYS. ED. = 17,500 sf	[Green Box]
*NO CHANGE MEDIA CENTER = 6,800 sf	[Yellow Box]
*NO CHANGE DINING & FOOD SERVICE = 6,770 sf	[Dark Blue Box]
*NO CHANGE MEDICAL = 300 sf	[Light Green Box]
*NO CHANGE ADMIN. & GUIDANCE = 4,200 sf	[Light Blue Box]
*NO CHANGE AUDITORIUM & STAGE = 9,250 sf	[Light Blue Box]
*NO CHANGE JUSTODIAL & MAINTENANCE = 2,050 sf	[Light Blue Box]
BRIDGE PROGRAM = 750 sf	[Pink Box]
CENTRAL OFFICE = 3,750 sf	[Green Box]
TOTAL NET = 104,490 sf	
TOTAL GROSS = 155,000 sf	

EXISTING CORE ACADEMIC	
CLASSROOMS = 35	
SCIENCE ROOMS = 7	
TOTAL SPACES = 42	

REVISED CORE ACADEMIC	
CLASSROOMS = 21	
SCIENCE ROOM = 7	
TEACHER PLANNING = 2	
STUDENT COLLABORATIVE = 2	
TOTAL SPACES = 32 @ 28,900sf	

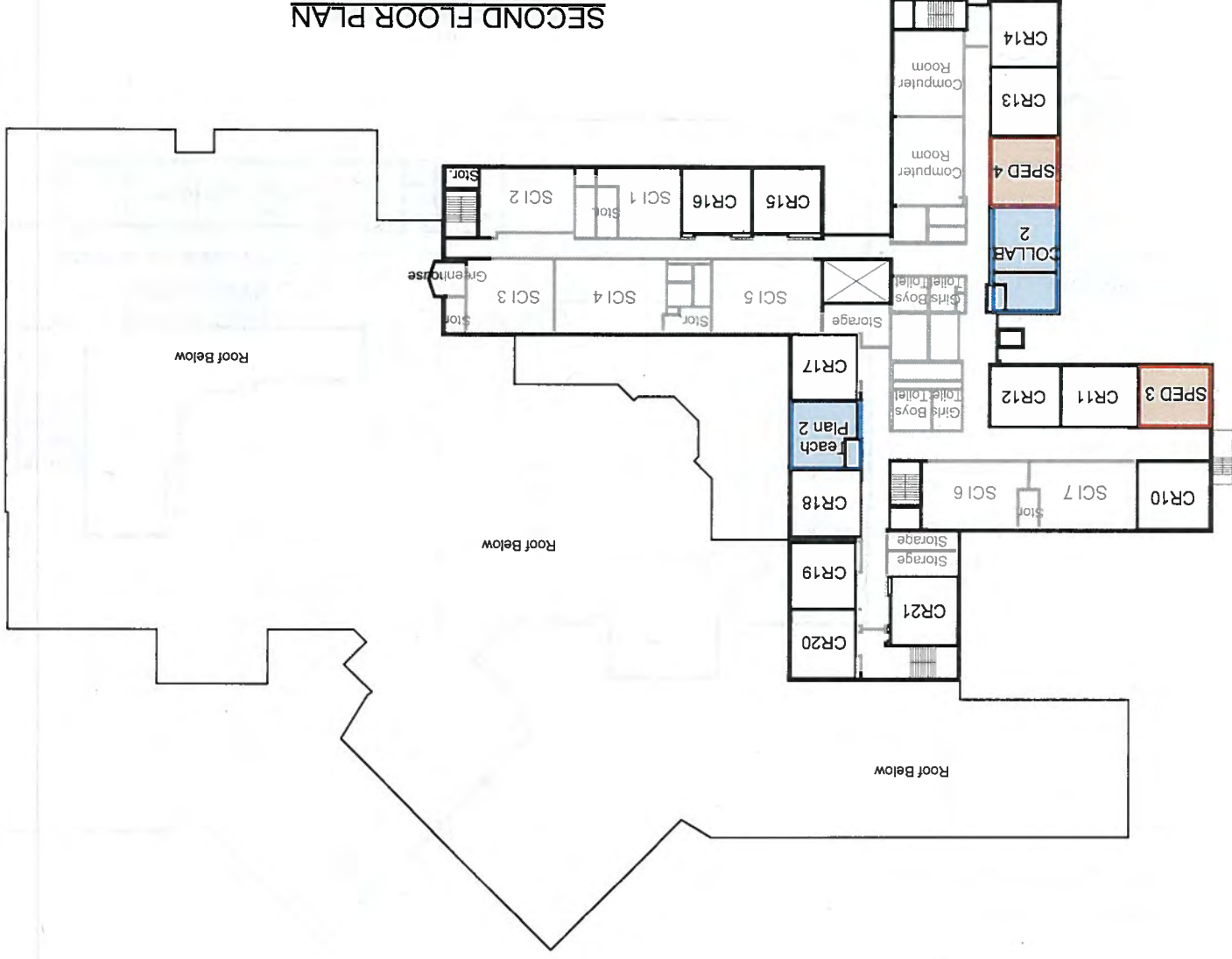


Bourne High School  
Bourne, Massachusetts

**OPTION 'B'**  
New Academic, SPED, Spaces with Central Office

**Flansburgh Architects**

SECOND FLOOR PLAN  
Student Enrollment: 448



REVISED CORE ACADEMIC

CLASSROOMS = 21
SCIENCE ROOM = 7
TEACHER PLANNING = 2
STUDENT COLLABORATIVE = 2
TOTAL SPACES = 32 @ 28,900sf

EXISTING CORE ACADEMIC

CLASSROOMS = 35
SCIENCE ROOMS = 7
TOTAL SPACES = 42

SPACE SUMMARY LEGEND

+	(4) ROOMS	SPECIAL EDUCATION = 5,150 sf
■		CORE ACADEMIC SPACES = 28,900 sf
■	NO CHANGE	ART & MUSIC = 7,540 sf
■	NO CHANGE	VOC. & TECHNOLOGY = 11,530 sf
■	NO CHANGE	HEALTH & PHYS. ED. = 17,500 sf
■	NO CHANGE	MEDIA CENTER = 6,800 sf
■	NO CHANGE	DINING & FOOD SERVICE = 6,770 sf
■	NO CHANGE	MEDICAL = 300 sf
■	NO CHANGE	ADMIN. & GUIDANCE = 4,200 sf
■	NO CHANGE	AUDITORIUM & STAGE = 9,250 sf
■	NO CHANGE	STODIAL & MAINTENANCE = 2,050 sf
■		BRIDGE PROGRAM = 750 sf
■		CENTRAL OFFICE = 3,750 sf
TOTAL NET = 104,490 sf		TOTAL GROSS = 155,000 sf

