
FACE COVERINGS are now **mandatory** for

Children under the age of **2** and those with breathing issues are **exempt**



EVERYONE IN PUBLIC SETTINGS

When should I wear a face covering?

- ★ While inside of or waiting in line to enter a grocery store, pharmacy, or other retail store
 - ★ When coming in contact (less than 6 feet) with people you don't live with, whether it be inside or outside
 - ★ When seeking healthcare
 - ★ When in common areas of multifamily housing (i.e. stairways, elevators, laundry rooms)
 - ★ In any situation where there is signage requiring a face covering
-



Face Covering

DO'S & DON'TS



DO:

- ✓ Make sure you can breathe through it
- ✓ Wear it whenever going out in public and social distancing is not guaranteed
- ✓ Make sure it covers your nose and mouth
- ✓ Wash after using

DON'T:

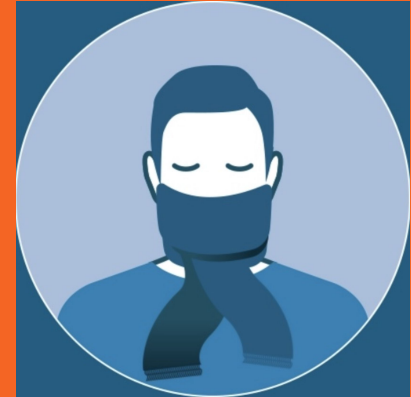
- ✗ Don't use on children under 2
- ✗ Don't use on those with medical conditions that contraindicate face cover use
- ✗ Don't use surgical masks or other personal protective equipment (PPE) intended for healthcare workers

For more information visit:
townofbourne.com cdc.gov mass.gov



Face coverings required

Please keep 6 ft apart



*Non-medical masks, bandanas, scarves, and cloth coverings should be used.
N95 and surgical masks should be saved for medical workers.*

