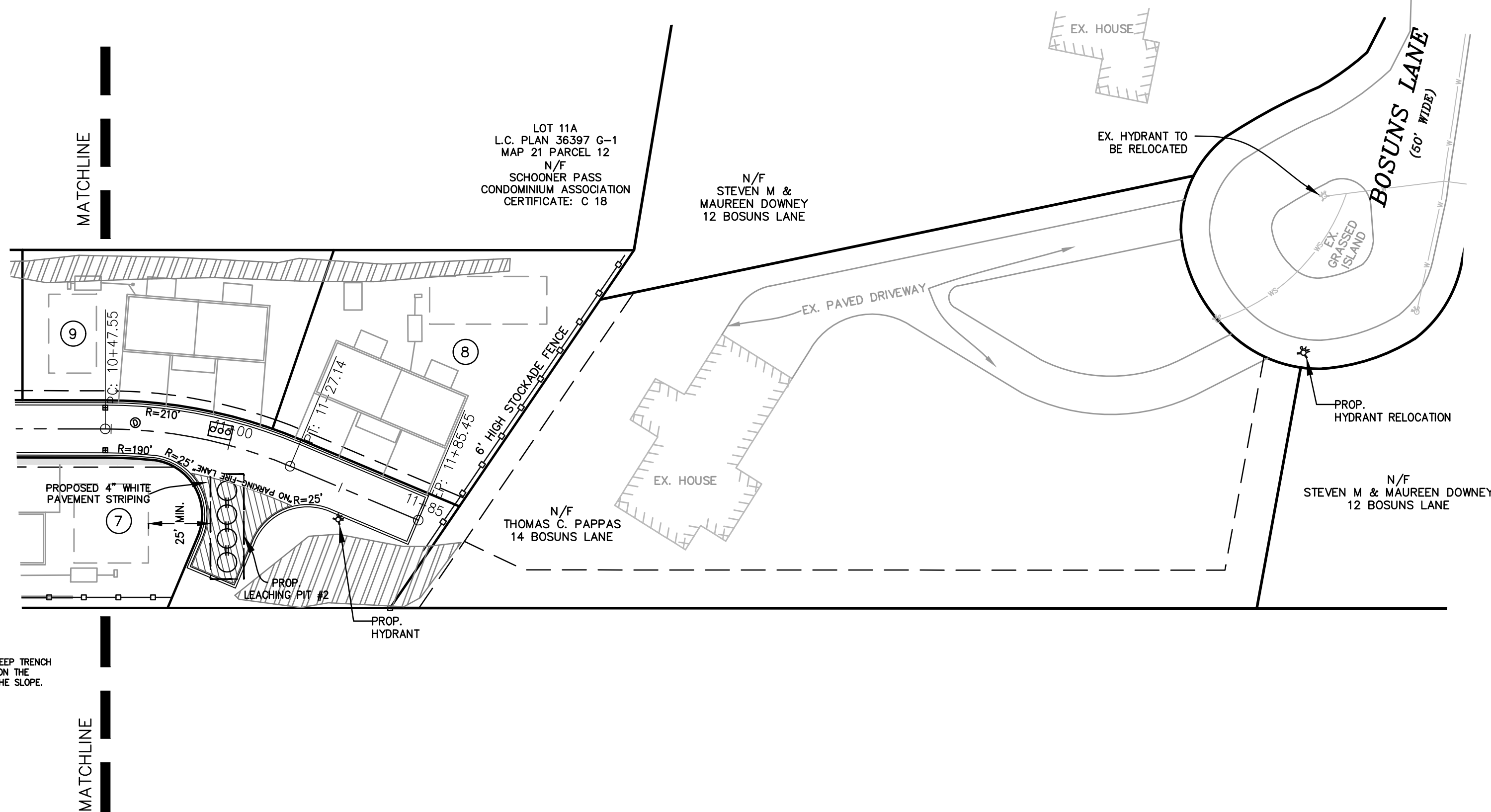
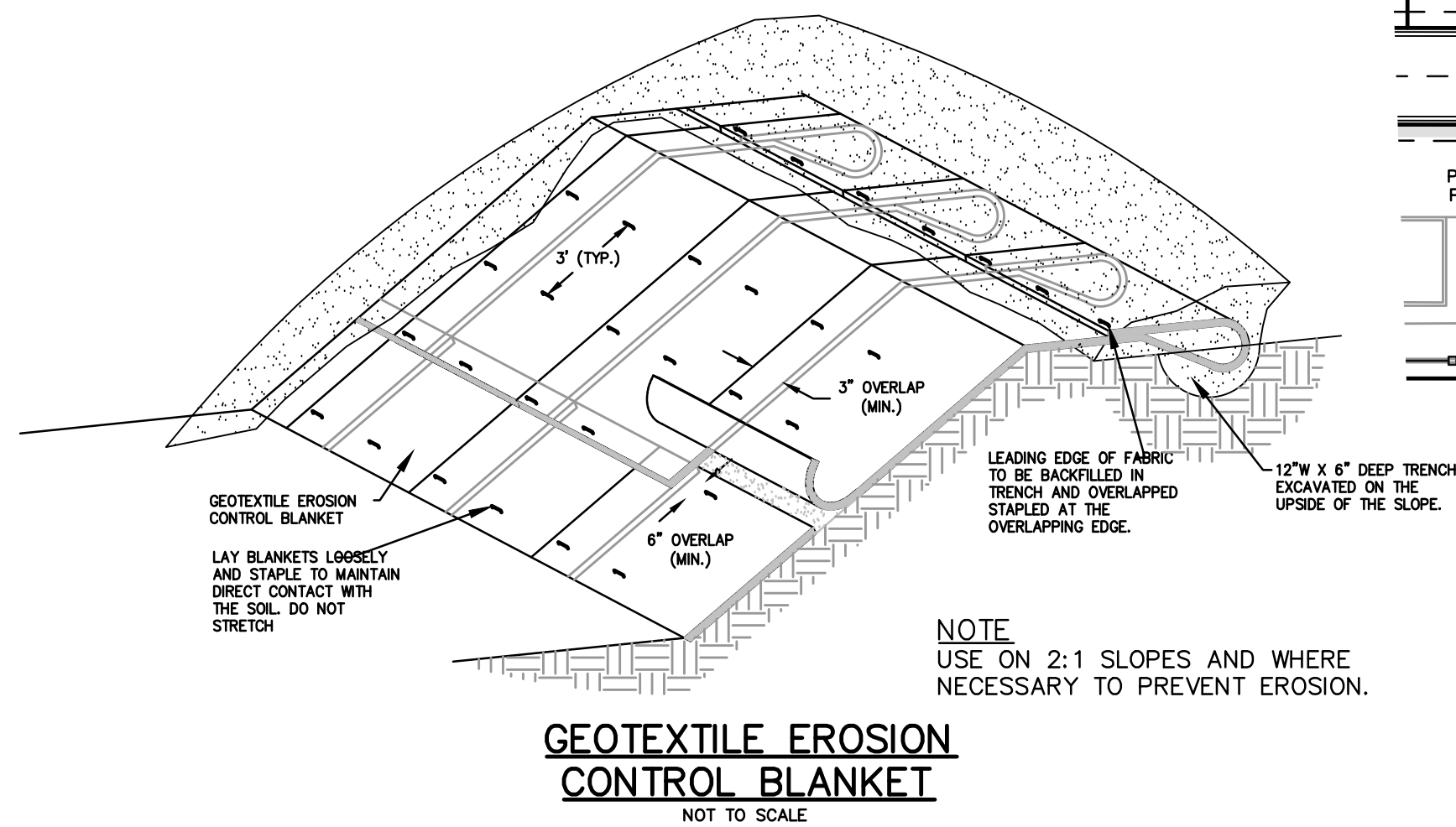


## LANDSCAPE NOTES

- LAWN AREAS TO BE SEEDED WITH SUN/SHADE SEED WITH 34% PERENNIAL RYEGRASS, 33% FINE FESCUE AND 33% KENTUCKY BLUEGRASS MIXTURE OR AN APPROVED EQUAL.
- SLOPES STEEPER THAN 3 TO 1 ARE TO BE SEEDED WITH NEW ENGLAND EROSION CONTROL/RESTORATION MIX FOR DRY SITES FROM NEW ENGLAND WETLAND PLANTS OR APPROVED EQUAL.
- SLOPES OF 2 TO 1 OR STEEPER ARE TO BE COVERED WITH GEOTEXTILE EROSION CONTROL BLANKET WHEN NECESSARY. SEE DETAIL FOR INSTALLATION INSTRUCTIONS.
- ALL DISTURBED AREAS SHALL BE LOAMED AND SEEDED AND BLENDED INTO THE EXISTING GRADE AND CONDITIONS.

- PROPOSED 1:1 SLOPE  
RIP-RAP REVETMENT
- 1.6:1 SLOPES WITH EROSION CONTROL/RESTORATION MIX & COCONUT FIBER OR OTHER BIODEGRADABLE EROSION CONTROL FABRICS
- 2:1 SLOPES WITH EROSION CONTROL/RESTORATION MIX & COCONUT FIBER OR OTHER BIODEGRADABLE EROSION CONTROL FABRICS



FOR REGISTRY USE ONLY

I CERTIFY THAT THIS PLAN HAS BEEN PREPARED IN CONFORMANCE WITH THE RULES AND REGULATIONS OF THE REGISTERS OF DEEDS.

DATE PROFESSIONAL LAND SURVEYOR

APPROVED SUBJECT TO TERMS AND CONDITIONS OF A COMPREHENSIVE PERMIT PER ZONING BOARD OF APPEALS DECISION AS AUTHORIZED BY CHAPTER 40B OF THE MASSACHUSETTS GENERAL LAWS, SECTION 20-23

DATE:

BOURNE ZONING BOARD

I CERTIFY THAT 20 DAYS HAVE ELAPSED SINCE ZONING BOARD APPROVAL, AND THAT NO APPEAL HAS BEEN FILED AT THIS OFFICE.

TOWN CLERK - TOWN OF BOURNE

## REVISIONS

NO.	DATE	DESCRIPTION

## OWNER

230 SANDWICH ROAD REALTY TRUST  
14 BOSUNS LANE  
BOURNE, MA

## APPLICANT

CHASE DEVELOPERS INC.  
14 BOSUNS LANE  
BOURNE, MA

## SLOPE PROTECTION PLAN

"CHASE ESTATES"  
SUBDIVISION

AT  
230 SANDWICH ROAD  
IN  
BOURNE  
MASSACHUSETTS

**Outback Engineering**  
Incorporated

165 EAST GROVE STREET  
MIDDLEBOROUGH, MA 02346  
TEL: (508)-946-9231  
FAX: (508)-947-8873  
www.outback-eng.com

DATE: OCTOBER 19, 2021  
DRAWN BY: KAD CHECKED BY: JAP  
SCALE: 1"=40' SHEET 1 OF 1

0' 40' 80' 120'

OE-3294A